

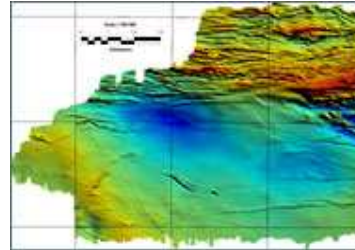
Natural resources and the environment

Airborne geophysical survey conducted of Waterberg coalfield

The Waterberg in Limpopo has, outside of the rich Witbank region, one of the most abundant coal deposits in the country.

As a result, the CSIR has been employed by Coaltech as part of a panel of experts to conduct an extensive airborne geophysical survey between Lephalale (formerly Ellisras) and the Botswana border towards the north. The purpose was to expand on current knowledge about the geological structure of the area.

The survey, which employed both magnetic and radiometric methods to map the geological profile below the surface, was conducted in late 2007. The month-long operation involved a Cessna plane flying at a height of 80 m above ground, covering an area of more than 1 800 km². The data collected are not available yet. "We will probably have the first processed results by the end of April 2008," says Stoffel Fourie of the CSIR's applied geoscience research group.



Preliminary results of the Waterberg airborne magnetic data survey. The contact between the Waterberg basin and the Limpopo mobile belt towards the north is seen clearly