

2006 Fynmeet Sea Clutter Measurement Trial

Dataset Overview for 01-Aug-2006

Dr PL Herselman

2006 Fynmeet Sea Clutter Measurement Trial : Dataset Overview for 01-Aug-2006

by Dr PL Herselman

Published 06-Sep-2007 12:57:34

Copyright © 2006 Council for Scientific and Industrial Research, South Africa

This document provides an overview for the datasets (or subset thereof) recorded on 01-Aug-2006 as part of the Fynmeet Sea Clutter Measurement Trial conducted at the Overberg Test Range at Arniston, South Africa. The trial was conducted over the period from 18 July to 4 August 2006. These datasets have been stored in structured Mathworks Matlab (*.mat) files and will be made available to research institutes or universities upon request. For more information contact Dr PL Herselman at pherselman@csir.co.za.

Copyright CSIR. The copyright of this document is the property of the CSIR. The document is issued for the sole purpose for which it is supplied, on the express conditions that it may not be copied in whole or in part, used by or disclosed to others, except as authorised in writing by the CSIR.

Table of Contents

Dataset TFC15-001..... 1

Dataset TFC15-002..... 3

Dataset TFC15-003..... 5

Dataset TFC15-004..... 7

Dataset TFC15-005..... 9

Dataset TFC15-006..... 11

Dataset TFC15-007..... 13

Dataset TFC15-008..... 15

Dataset TFC15-009..... 17

Dataset TFC15-010..... 19

Dataset TFC15-011..... 21

Dataset TFC15-012..... 23

Dataset TFC15-013..... 25

Dataset TFC15-014..... 27

Dataset TFC15-015..... 29

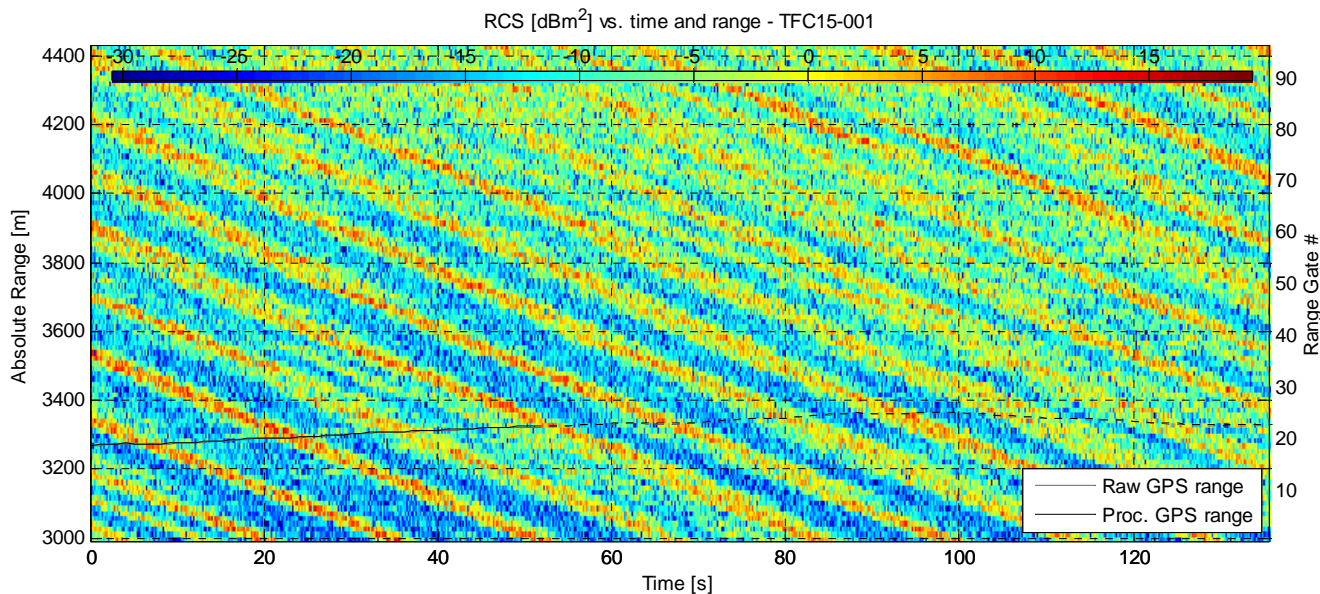
Dataset TFC15-016..... 31

Dataset TFC15-017..... 33

Dataset TFC15-018..... 35

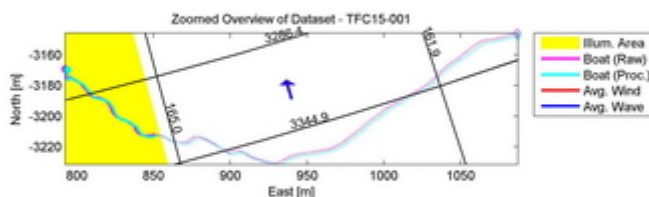
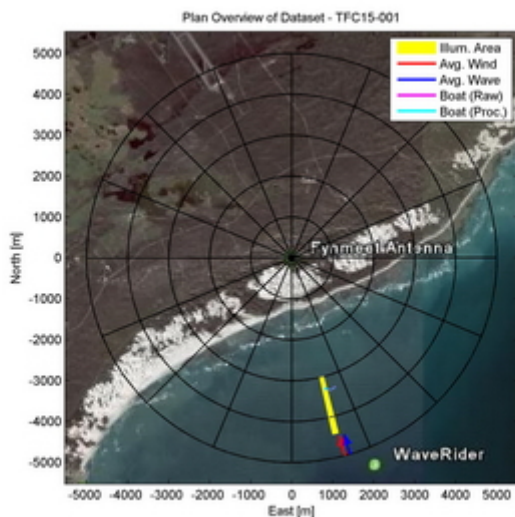
Dataset TFC15-019..... 37

Dataset TFC15-001

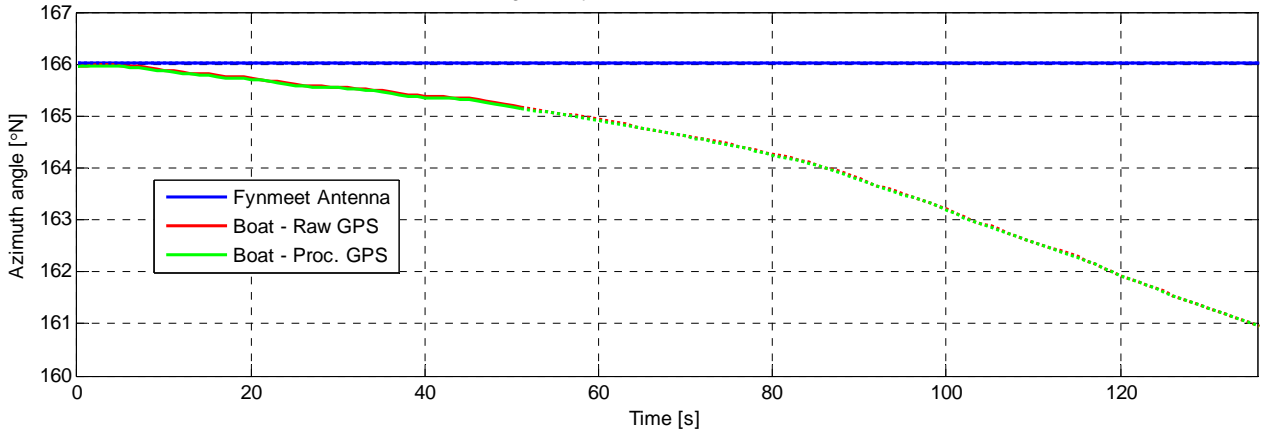


Experiment Summary	Value	Radar Setup	Value
Type	Target	Tx Frequency	9 GHz
Date	01-Aug-2006	PRF	5 kHz
Start Time	13:24:17.890	Tracking Range	2999.69 m
Duration	678760 PRI's (135.7518 s)	Range Extend	1440 m (96 gates), 15 m res.
Original File	PF060801.013	Waveform Type	Fixed Frequency
Original Path	\20060801_ifs_g_extra	Waveform Bandwidth	N/A
Processor Version	FMSCP Ver 01.22	Waveform File	SC_Fixed_256BL.txt

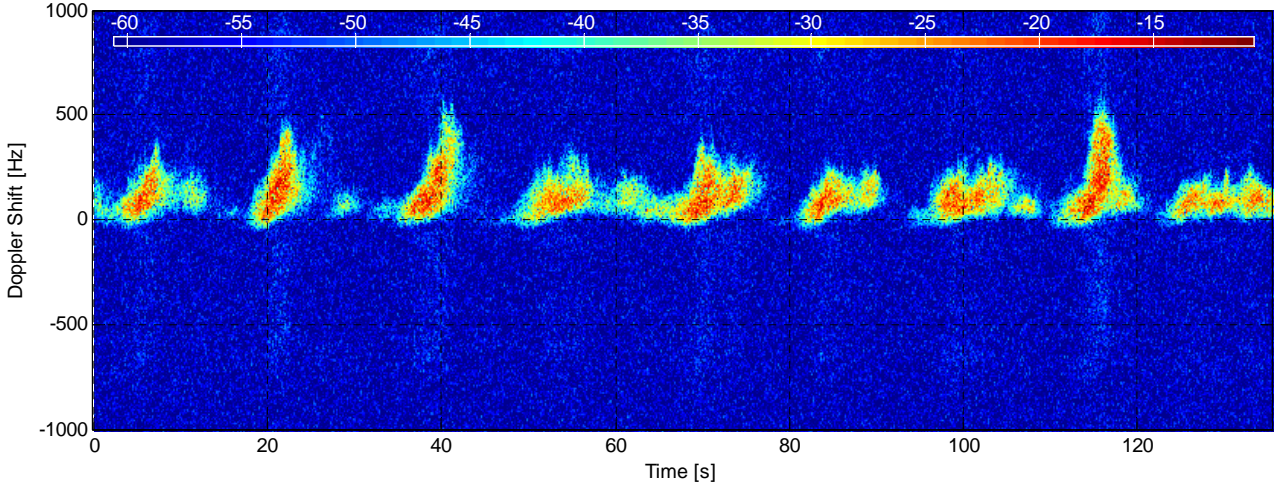
Environment	Value	Geometry	Value	Processing	Value
Inst. Wind	15.8 kts, 165.1 deg. N	Grazing Angle	0.853 - 1.27 deg.	Odd Gates Offset	0.70768+6.8718i
Wind Gust	23.3 kts, 184 deg. N	Antenna Azm.	166 deg. N	Even Gates Offset	7.17641-8.685i
8hr Avg. Wind	15.8 kts, 166.9 deg. N	Antenna Elv.	-1.187 deg.	I/Q Imbalance	Bypassed
Wave (SWH)	3.23 m, 163.3 deg. N	Antenna BW.	1.8 deg. Az, 1.8 deg. El	Complex Conj.	Applied
		GPS Data	Available	Calibr. Coeff.	190.9 dB



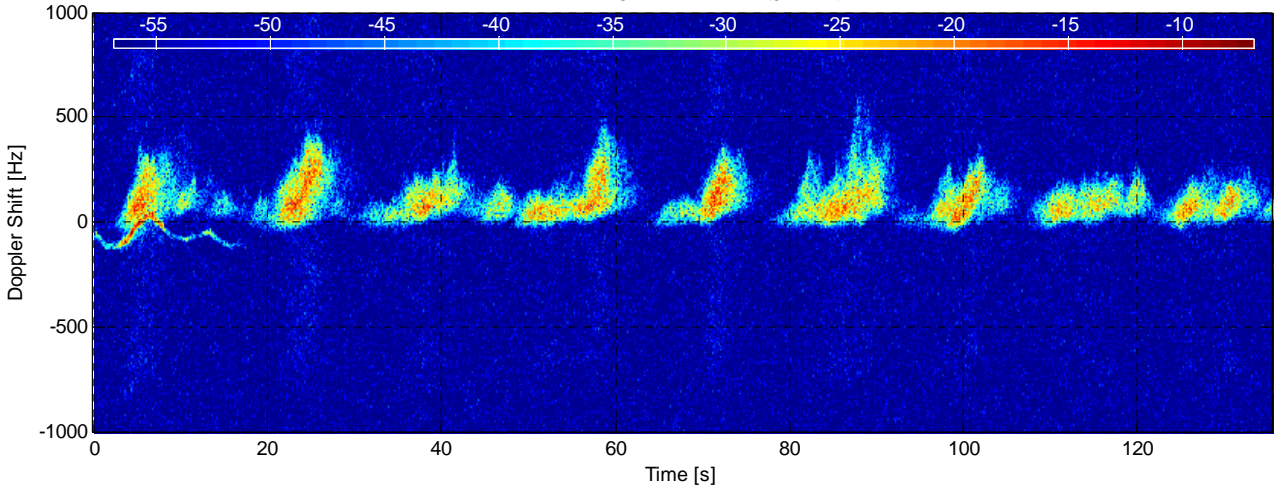
Azimuth Angle for Fynmeet Antenna and Boat - TFC15-001



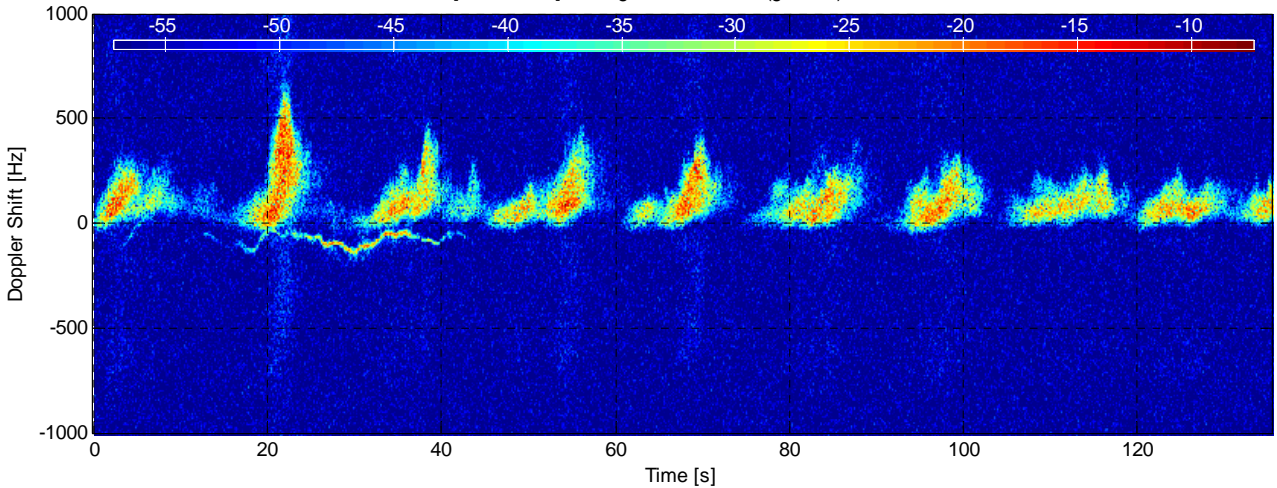
RCS [dBm².Hz⁻¹] at range 3134.6875 m (gate 10) - TFC15-001



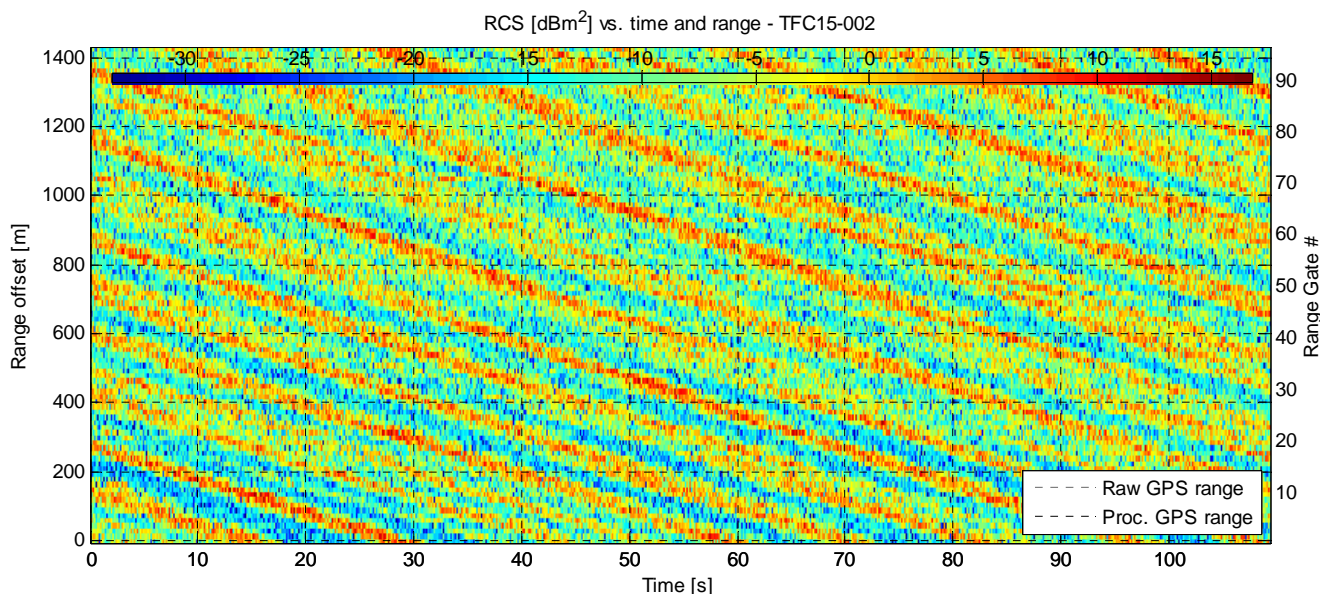
RCS [dBm².Hz⁻¹] at range 3284.6875 m (gate 20) - TFC15-001



RCS [dBm².Hz⁻¹] at range 3314.6875 m (gate 22) - TFC15-001

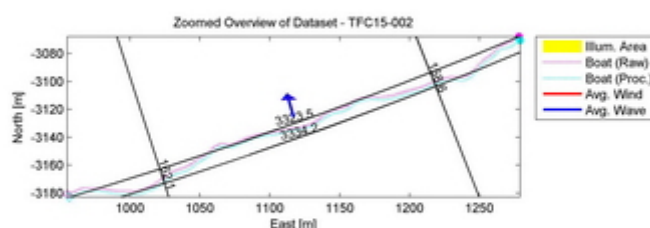
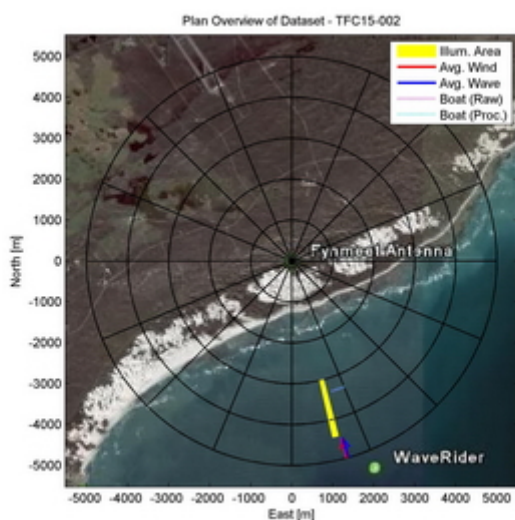


Dataset TFC15-002

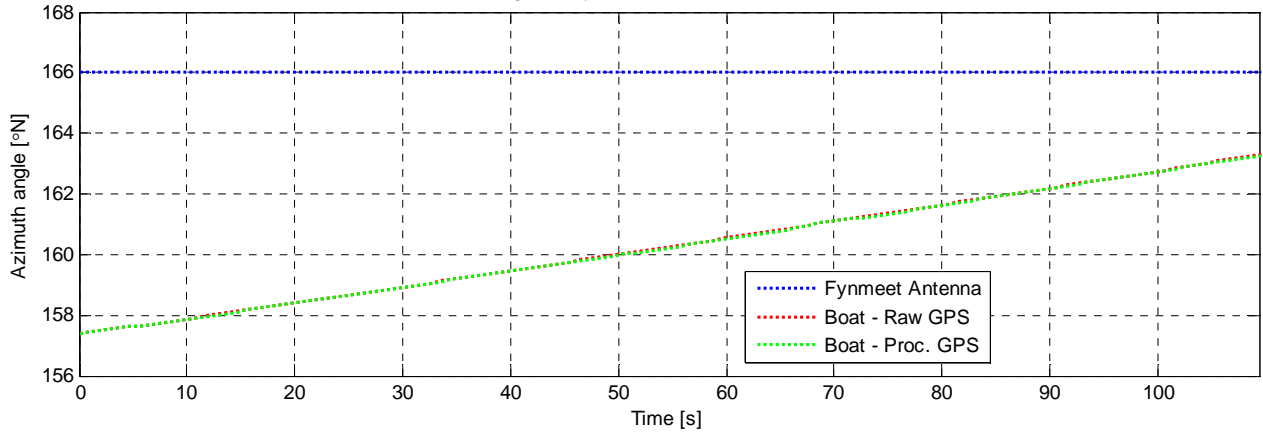


Experiment Summary	Value	Radar Setup	Value
Type	Target	Tx Frequency	9 GHz
Date	01-Aug-2006	PRF	5 kHz
Start Time	13:28:11.421	Tracking Range	2999.69 - 3000.31 m
Duration	546960 PRI's (109.3918 s)	Range Extend	1440 m (96 gates), 15 m res.
Original File	PF060801.014	Waveform Type	Fixed Frequency
Original Path	\20060801_ifs_g_extra	Waveform Bandwidth	N/A
Processor Version	FMSCP Ver 01.22	Waveform File	SC_Fixed_256BL.txt

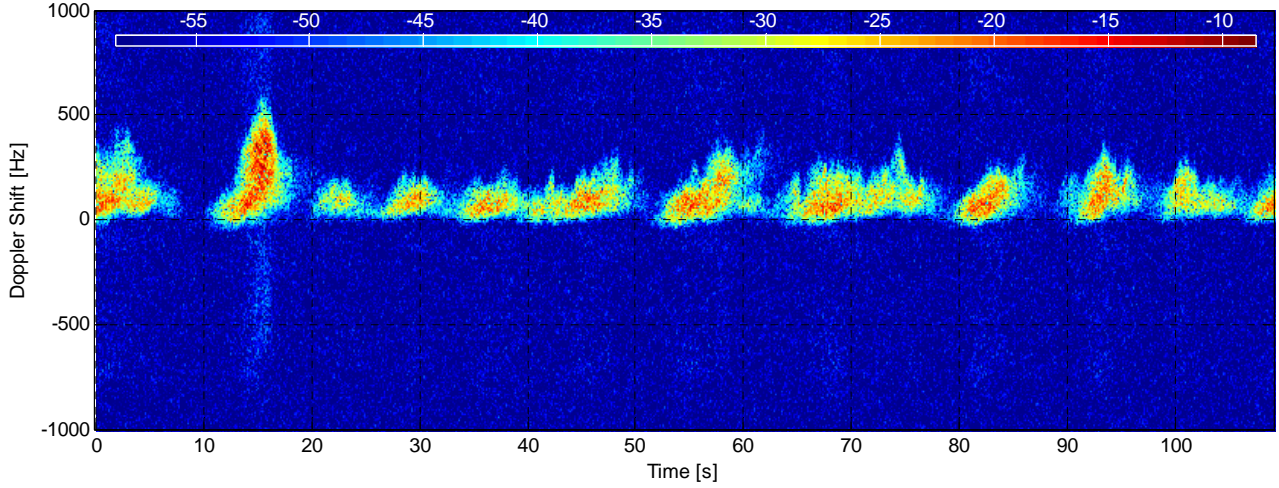
Environment	Value	Geometry	Value	Processing	Value
Inst. Wind	15.8 kts, 164.6 deg. N	Grazing Angle	0.853 - 1.27 deg.	Odd Gates Offset	0.74314+6.8427i
Wind Gust	23.3 kts, 184 deg. N	Antenna Azm.	166 deg. N	Even Gates Offset	7.23321-8.72165i
8hr Avg. Wind	15.8 kts, 166.9 deg. N	Antenna Elv.	-1.187 deg.	I/Q Imbalance	Bypassed
Wave (SWH)	3.24 m, 163.8 deg. N	Antenna BW.	1.8 deg. Az, 1.8 deg. El	Complex Conj.	Applied
		GPS Data	Available	Calibr. Coeff.	190.9 dB



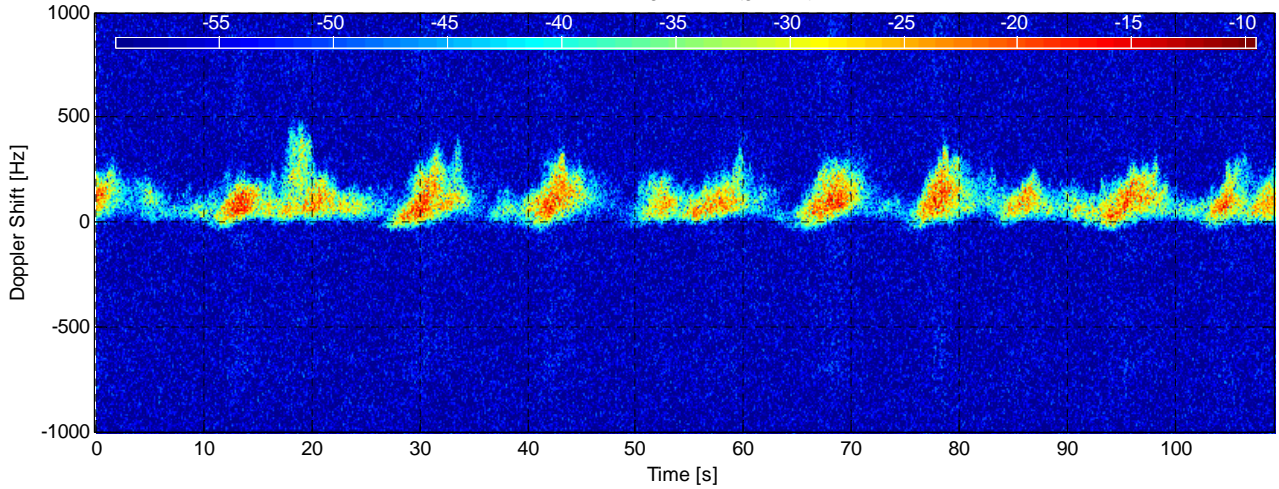
Azimuth Angle for Fynmeet Antenna and Boat - TFC15-002



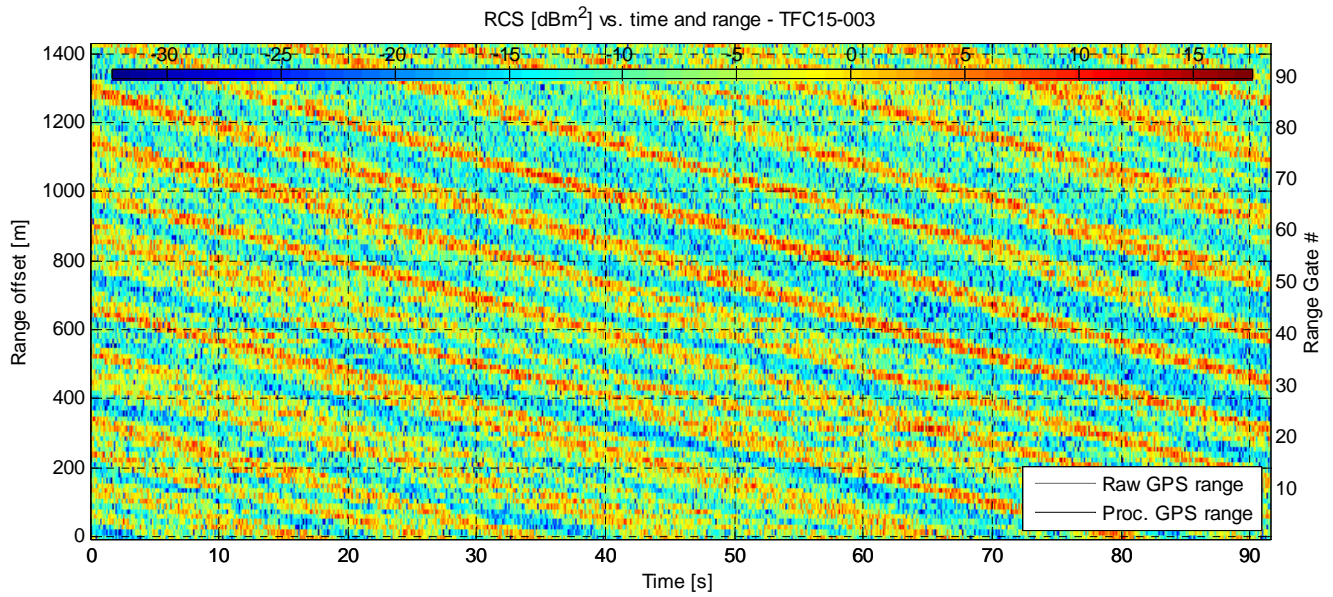
RCS [dBm².Hz⁻¹] at range 135 m (gate 10) - TFC15-002



RCS [dBm².Hz⁻¹] at range 285 m (gate 20) - TFC15-002

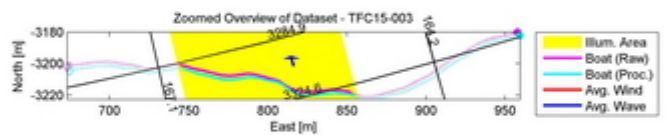
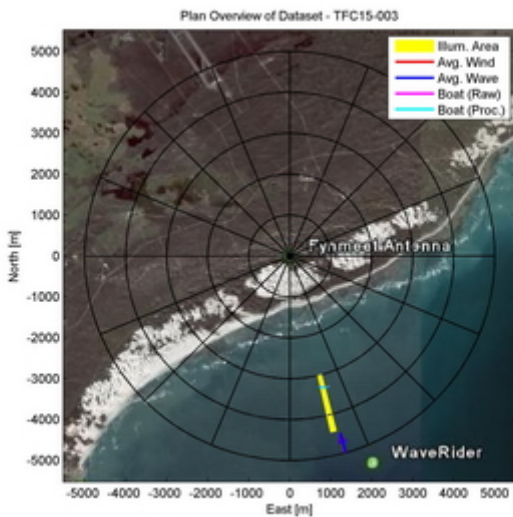


Dataset TFC15-003

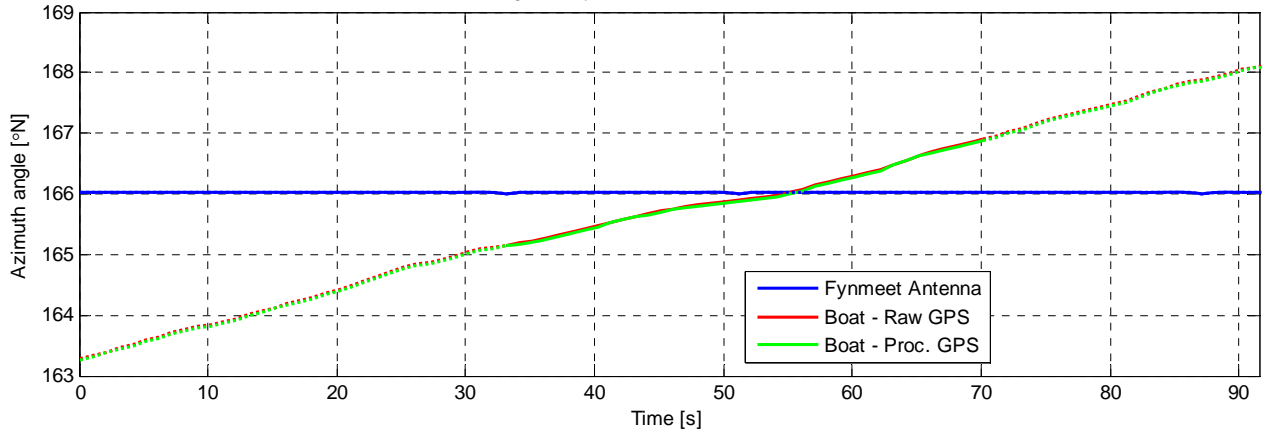


Experiment Summary	Value	Radar Setup	Value
Type	Target	Tx Frequency	9 GHz
Date	01-Aug-2006	PRF	5 kHz
Start Time	13:30:00.821	Tracking Range	2999.69 - 3000.31 m
Duration	457870 PRI's (91.5738 s)	Range Extend	1440 m (96 gates), 15 m res.
Original File	PF060801.014	Waveform Type	Fixed Frequency
Original Path	\20060801_ifs_g_extra	Waveform Bandwidth	N/A
Processor Version	FMSCP Ver 01.22	Waveform File	SC_Fixed_256BL.txt

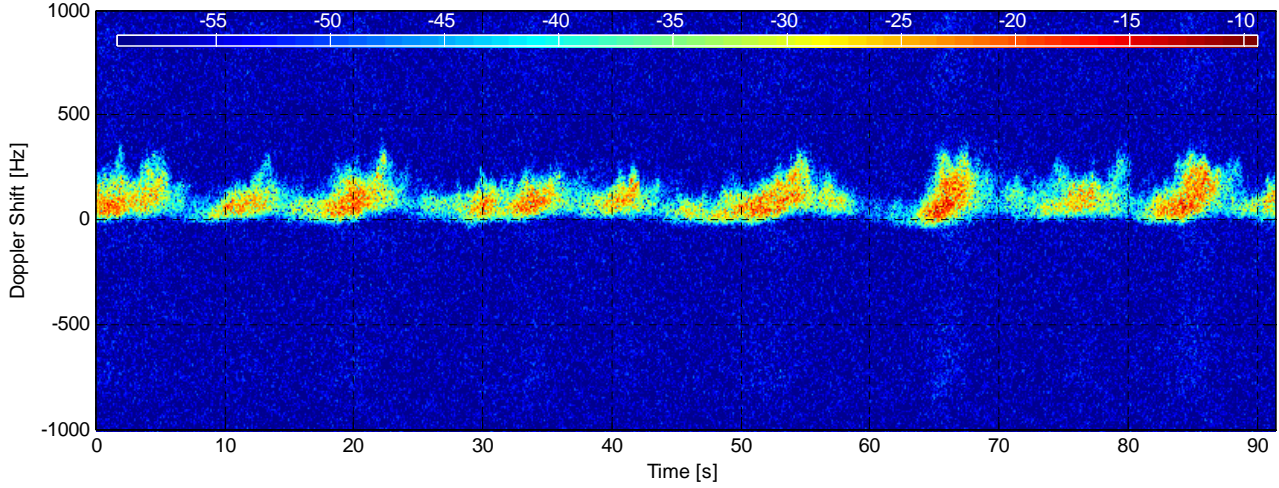
Environment	Value	Geometry	Value	Processing	Value
Inst. Wind	15.8 kts, 164.4 deg. N	Grazing Angle	0.853 - 1.27 deg.	Odd Gates Offset	0.69636+6.9446i
Wind Gust	23.3 kts, 184 deg. N	Antenna Azm.	166 deg. N	Even Gates Offset	7.21128-8.60864i
8hr Avg. Wind	15.8 kts, 166.9 deg. N	Antenna Elv.	-1.187 deg.	I/Q Imbalance	Bypassed
Wave (SWH)	3.24 m, 164 deg. N	Antenna BW.	1.8 deg. Az, 1.8 deg. El	Complex Conj.	Applied
		GPS Data	Available	Calibr. Coeff.	190.9 dB



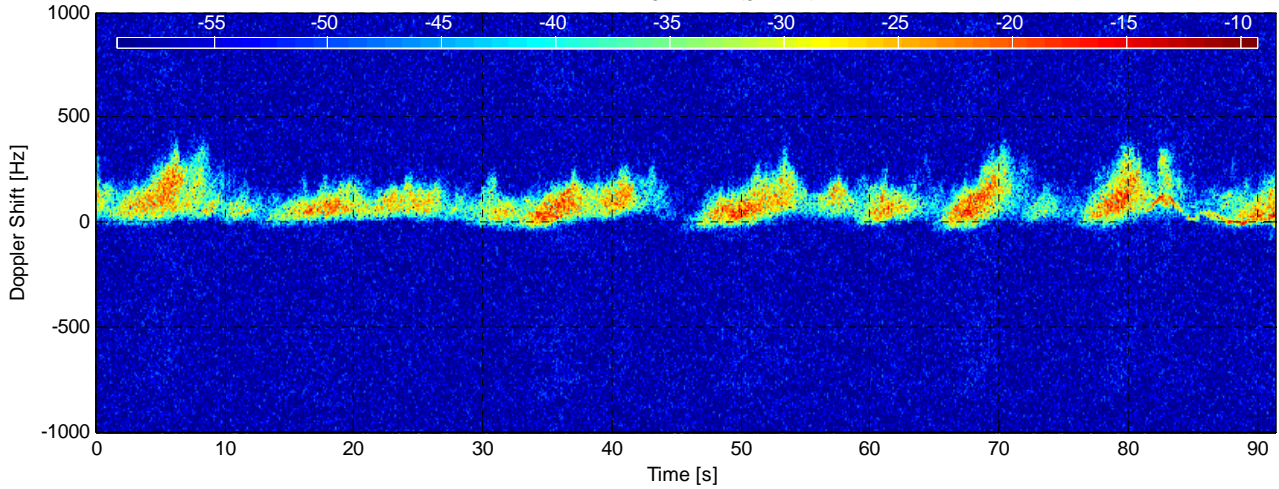
Azimuth Angle for Fynmeet Antenna and Boat - TFC15-003



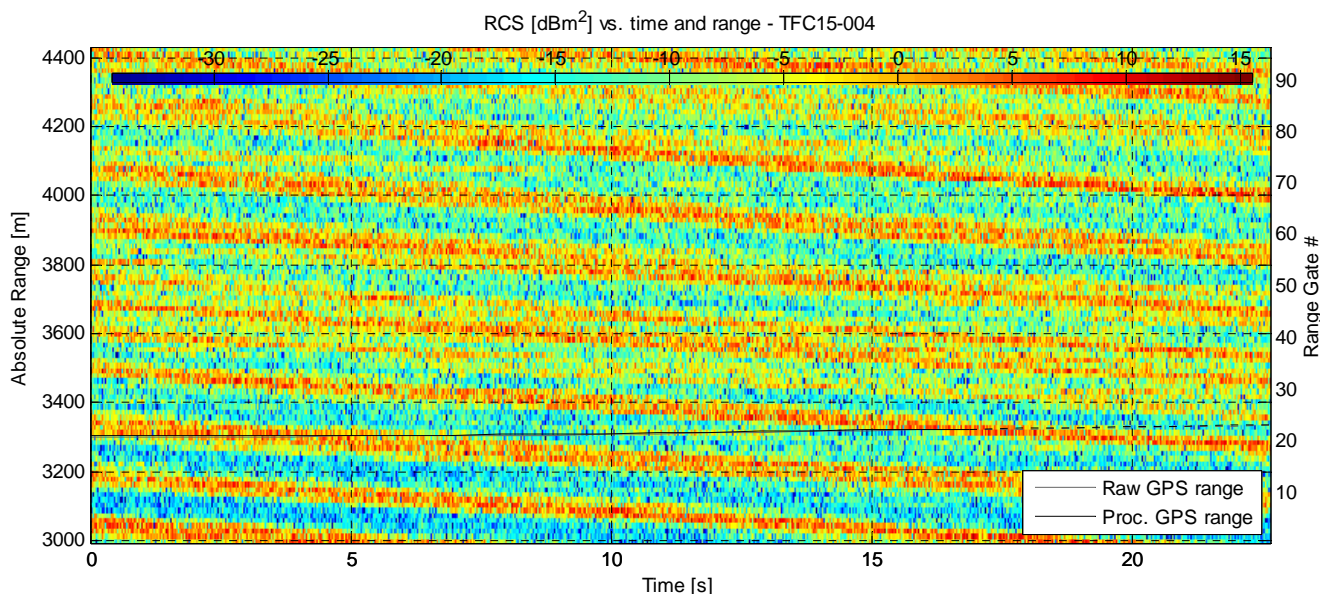
RCS [dBm².Hz⁻¹] at range 135 m (gate 10) - TFC15-003



RCS [dBm².Hz⁻¹] at range 285 m (gate 20) - TFC15-003

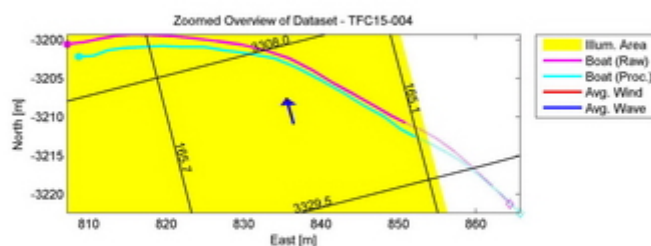
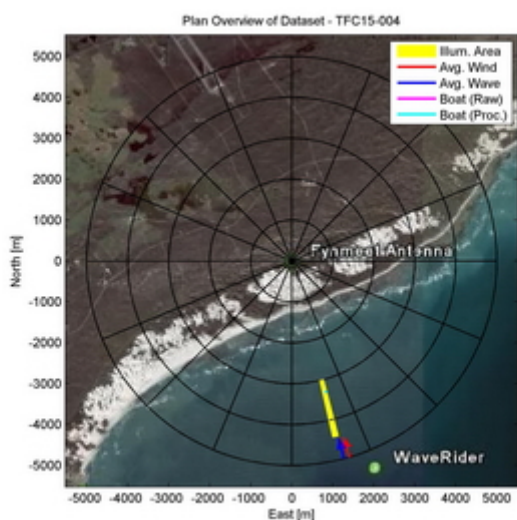


Dataset TFC15-004

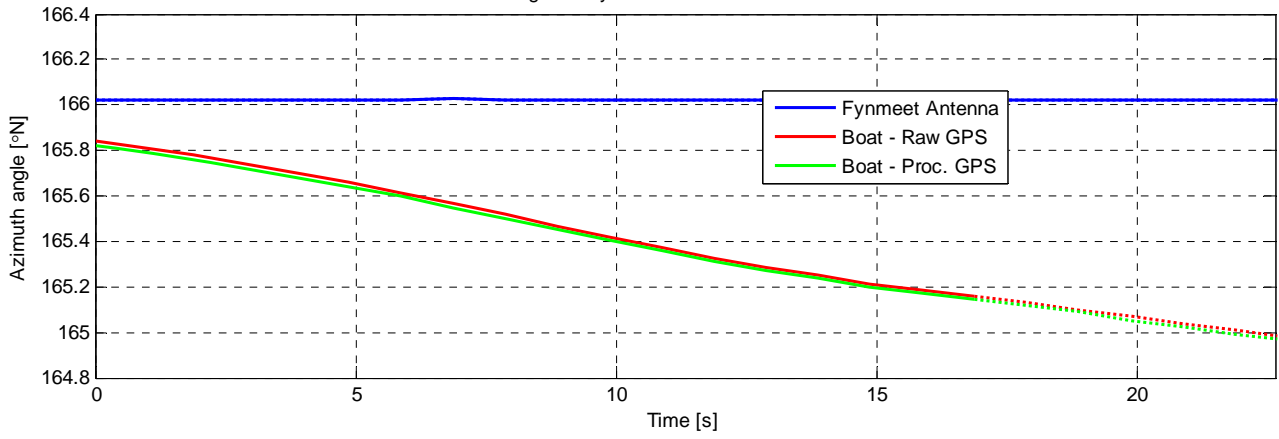


Experiment Summary	Value	Radar Setup	Value
Type	Target	Tx Frequency	9 GHz
Date	01-Aug-2006	PRF	5 kHz
Start Time	13:36:46.128	Tracking Range	3000.31 m
Duration	113240 PRI's (22.6478 s)	Range Extend	1440 m (96 gates), 15 m res.
Original File	PF060801.016	Waveform Type	Fixed Frequency
Original Path	\20060801_ifs_g_extra	Waveform Bandwidth	N/A
Processor Version	FMSCP Ver 01.22	Waveform File	SC_Fixed_256BL.txt

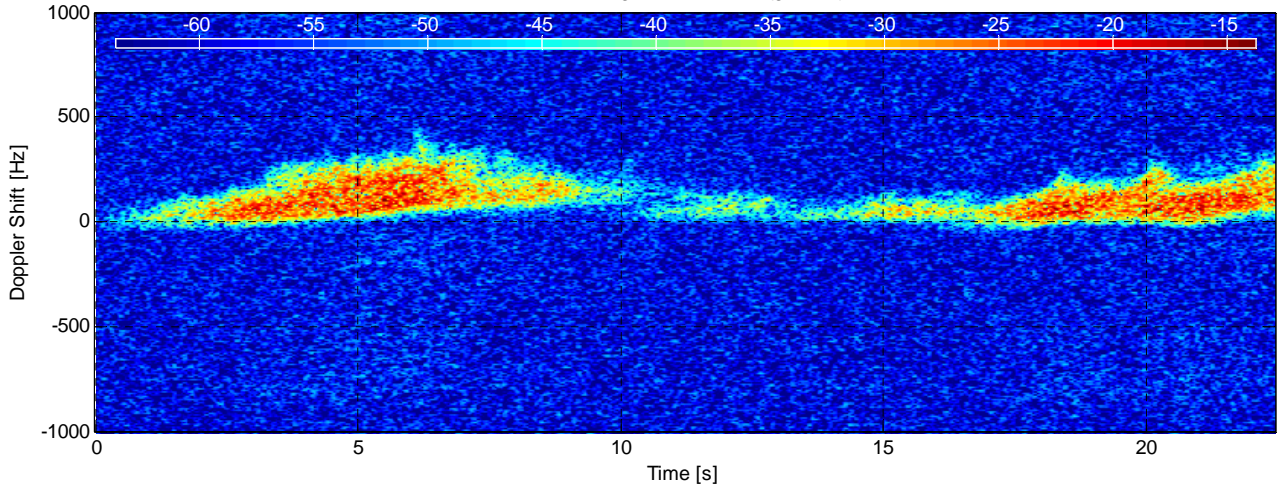
Environment	Value	Geometry	Value	Processing	Value
Inst. Wind	15.7 kts, 163.7 deg. N	Grazing Angle	0.853 - 1.27 deg.	Odd Gates Offset	0.73556+6.8409i
Wind Gust	23.3 kts, 184 deg. N	Antenna Azm.	166 deg. N	Even Gates Offset	7.1978-8.8125i
8hr Avg. Wind	15.8 kts, 166.8 deg. N	Antenna Elv.	-1.187 deg.	I/Q Imbalance	Bypassed
Wave (SWH)	3.23 m, 165 deg. N	Antenna BW.	1.8 deg. Az, 1.8 deg. El	Complex Conj.	Applied
		GPS Data	Available	Calibr. Coeff.	190.9 dB



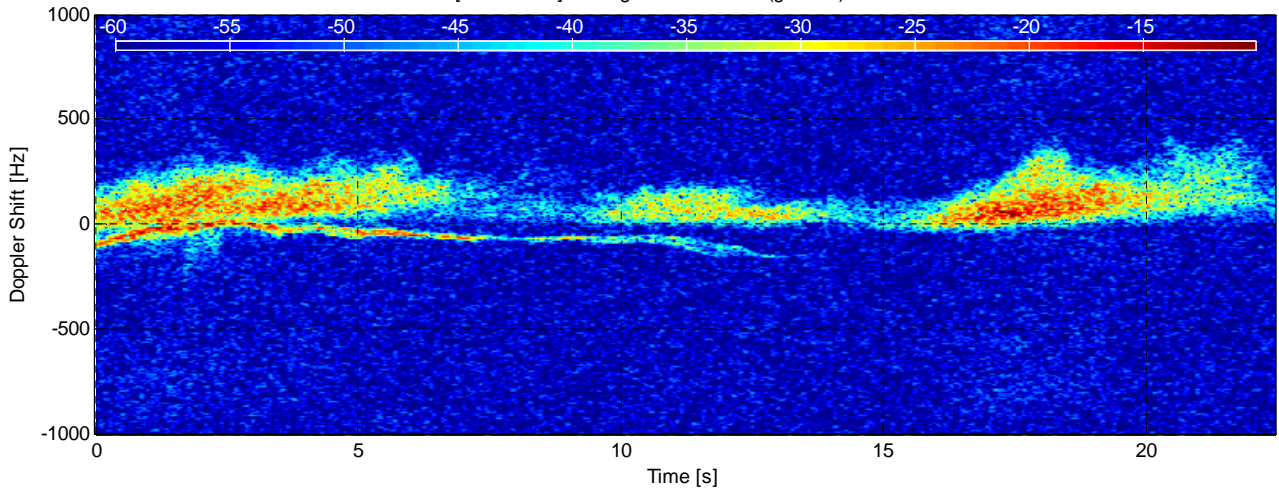
Azimuth Angle for Fynmeet Antenna and Boat - TFC15-004



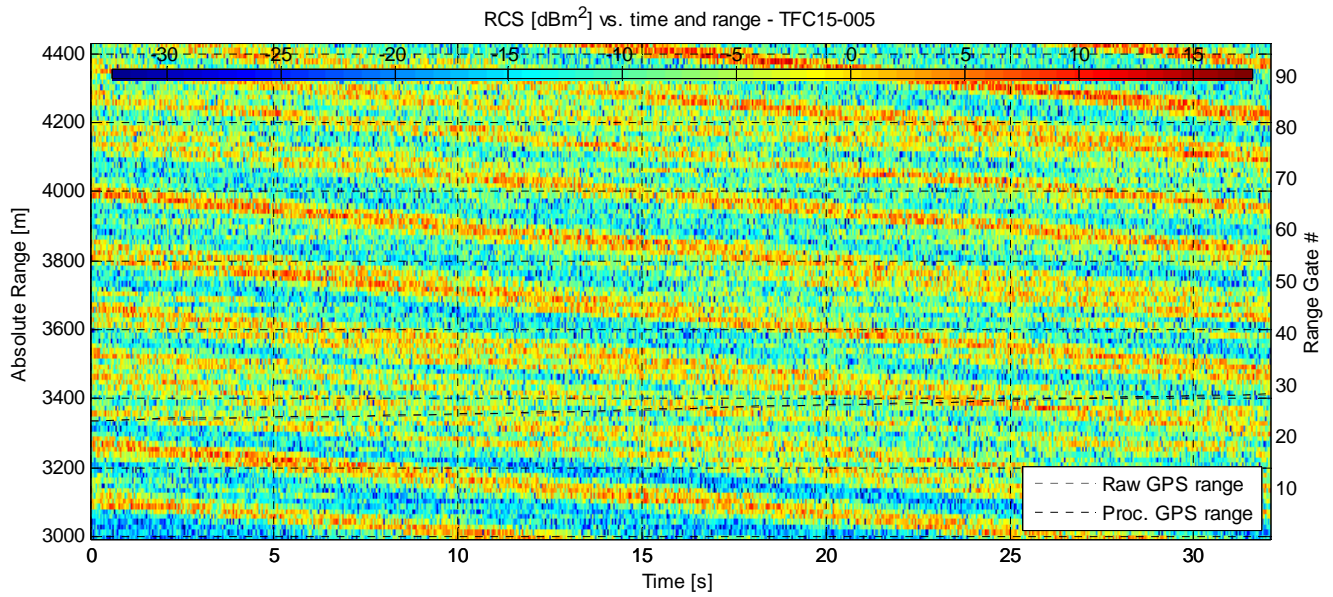
RCS [dBm².Hz⁻¹] at range 3135.3125 m (gate 10) - TFC15-004



RCS [dBm².Hz⁻¹] at range 3315.3125 m (gate 22) - TFC15-004

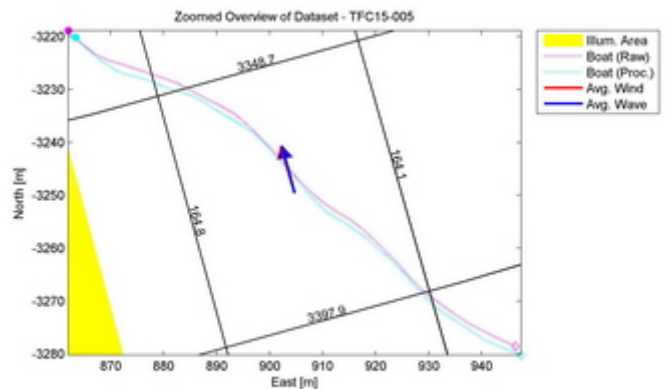
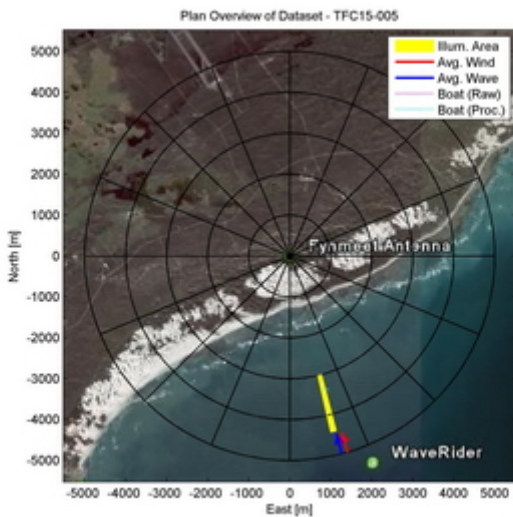


Dataset TFC15-005

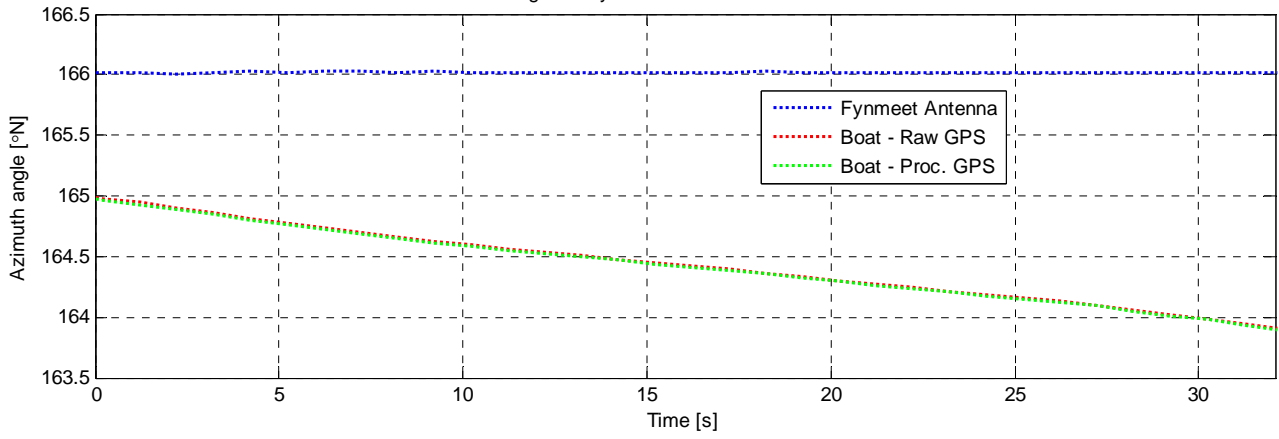


Experiment Summary	Value	Radar Setup	Value
Type	Target	Tx Frequency	9 GHz
Date	01-Aug-2006	PRF	5 kHz
Start Time	13:37:08.784	Tracking Range	3000.31 m
Duration	160360 PRI's (32.0718 s)	Range Extend	1440 m (96 gates), 15 m res.
Original File	PF060801.016	Waveform Type	Fixed Frequency
Original Path	\\20060801_ifs_g_extra	Waveform Bandwidth	N/A
Processor Version	FMSCP Ver 01.22	Waveform File	SC_Fixed_256BL.txt

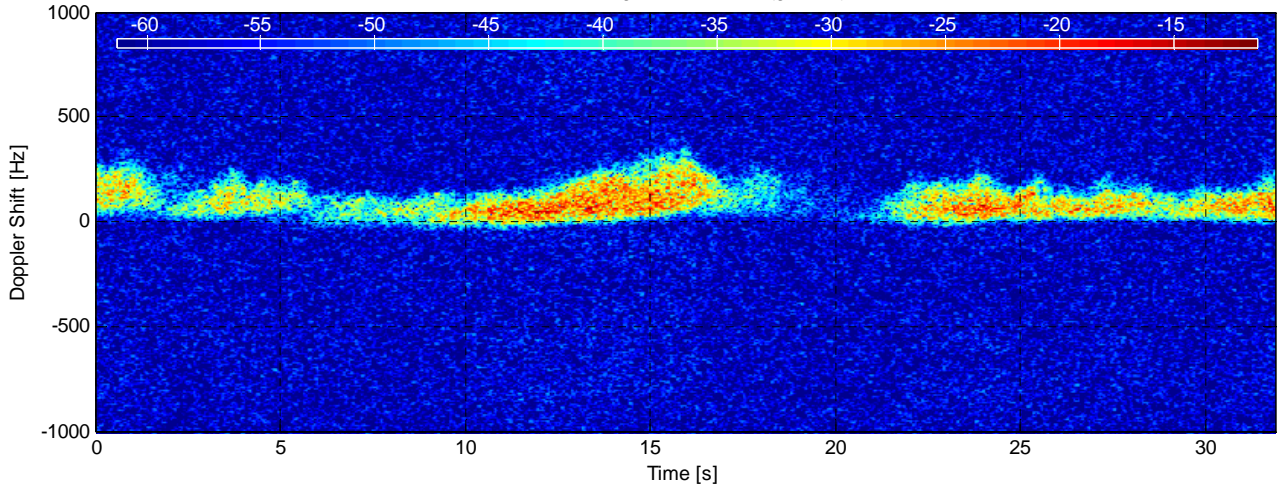
Environment	Value	Geometry	Value	Processing	Value
Inst. Wind	15.7 kts, 163.7 deg. N	Grazing Angle	0.853 - 1.27 deg.	Odd Gates Offset	0.70858+6.9793i
Wind Gust	23.3 kts, 184 deg. N	Antenna Azm.	166 deg. N	Even Gates Offset	7.17973-8.83355i
8hr Avg. Wind	15.8 kts, 166.8 deg. N	Antenna Elv.	-1.187 deg.	I/Q Imbalance	Bypassed
Wave (SWH)	3.23 m, 165.2 deg. N	Antenna BW.	1.8 deg. Az, 1.8 deg. El	Complex Conj.	Applied
		GPS Data	Available	Calibr. Coeff.	190.9 dB



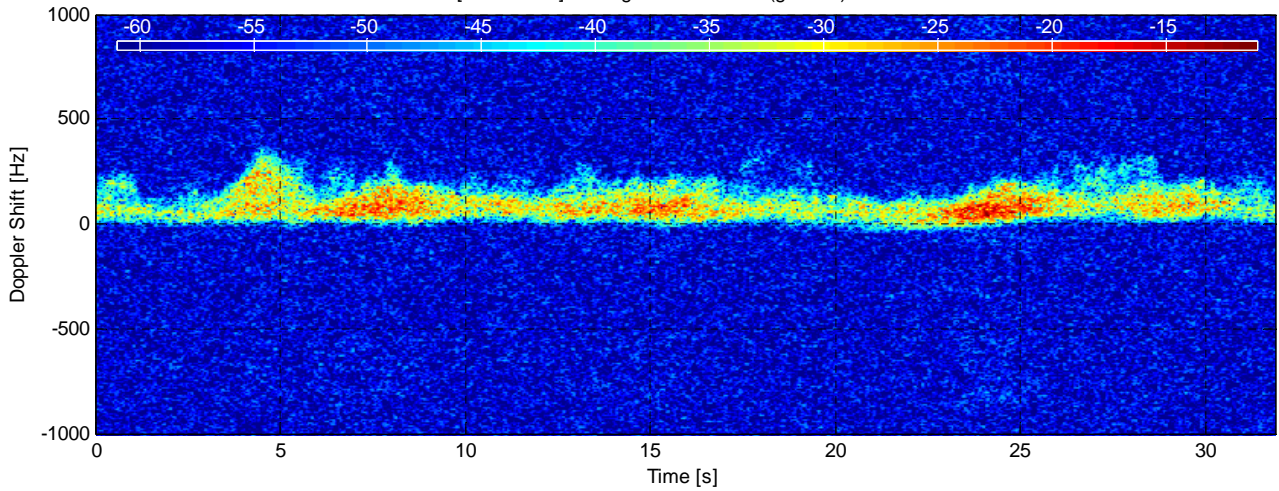
Azimuth Angle for Fynmeet Antenna and Boat - TFC15-005



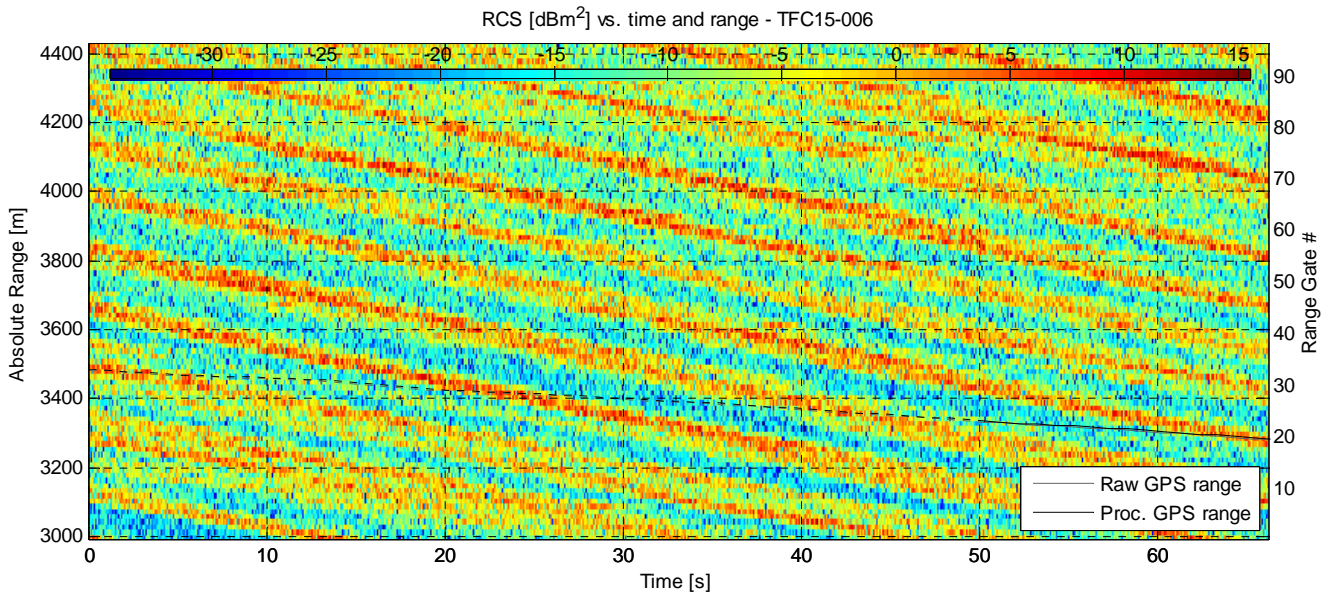
RCS [dBm².Hz⁻¹] at range 3135.3125 m (gate 10) - TFC15-005



RCS [dBm².Hz⁻¹] at range 3390.3125 m (gate 27) - TFC15-005

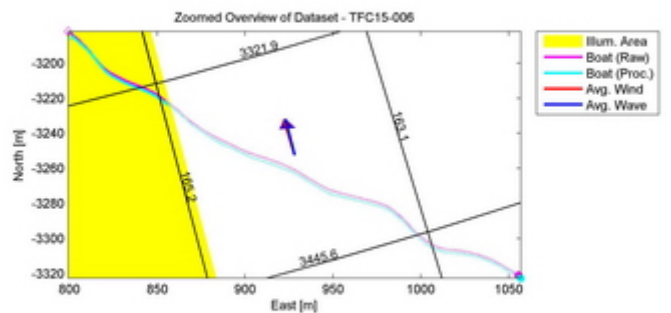
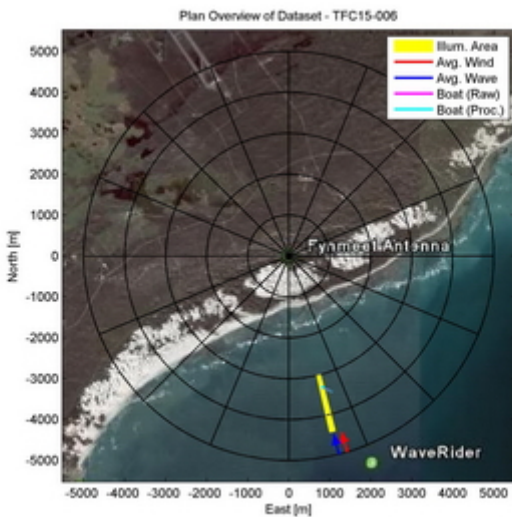


Dataset TFC15-006

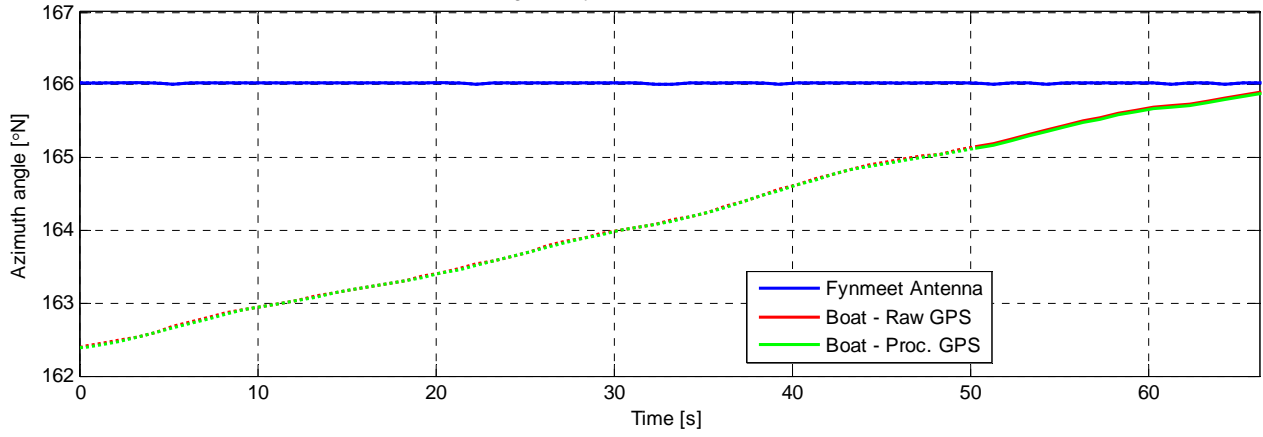


Experiment Summary	Value	Radar Setup	Value
Type	Target	Tx Frequency	9 GHz
Date	01-Aug-2006	PRF	5 kHz
Start Time	13:39:48.718	Tracking Range	3000.31 m
Duration	330920 PRI's (66.1838 s)	Range Extend	1440 m (96 gates), 15 m res.
Original File	PF060801.017	Waveform Type	Fixed Frequency
Original Path	\20060801_ifs_g_extra	Waveform Bandwidth	N/A
Processor Version	FMSCP Ver 01.22	Waveform File	SC_Fixed_256BL.txt

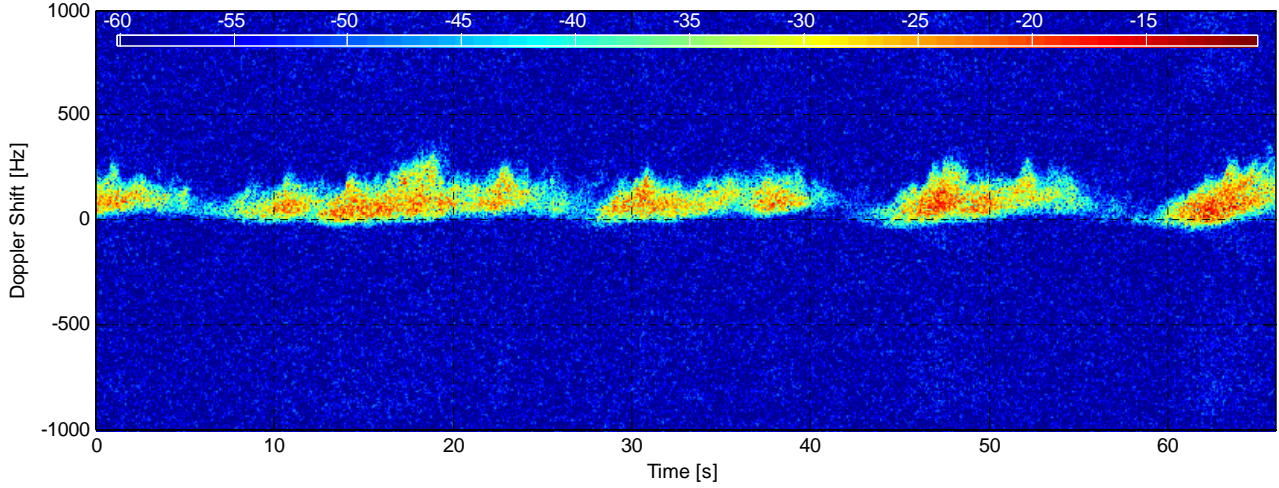
Environment	Value	Geometry	Value	Processing	Value
Inst. Wind	15.7 kts, 163.5 deg. N	Grazing Angle	0.853 - 1.27 deg.	Odd Gates Offset	0.751+6.8379i
Wind Gust	23.3 kts, 184 deg. N	Antenna Azm.	166 deg. N	Even Gates Offset	7.15206-8.79818i
8hr Avg. Wind	15.8 kts, 166.8 deg. N	Antenna Elv.	-1.187 deg.	I/Q Imbalance	Bypassed
Wave (SWH)	3.22 m, 165.6 deg. N	Antenna BW.	1.8 deg. Az, 1.8 deg. El	Complex Conj.	Applied
		GPS Data	Available	Calibr. Coeff.	190.9 dB



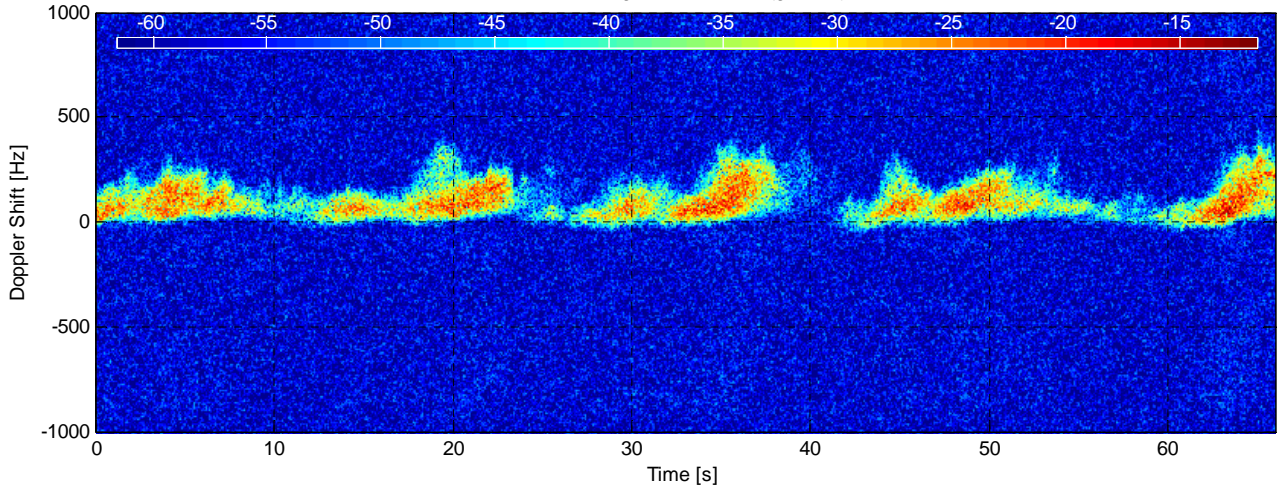
Azimuth Angle for Fynmeet Antenna and Boat - TFC15-006



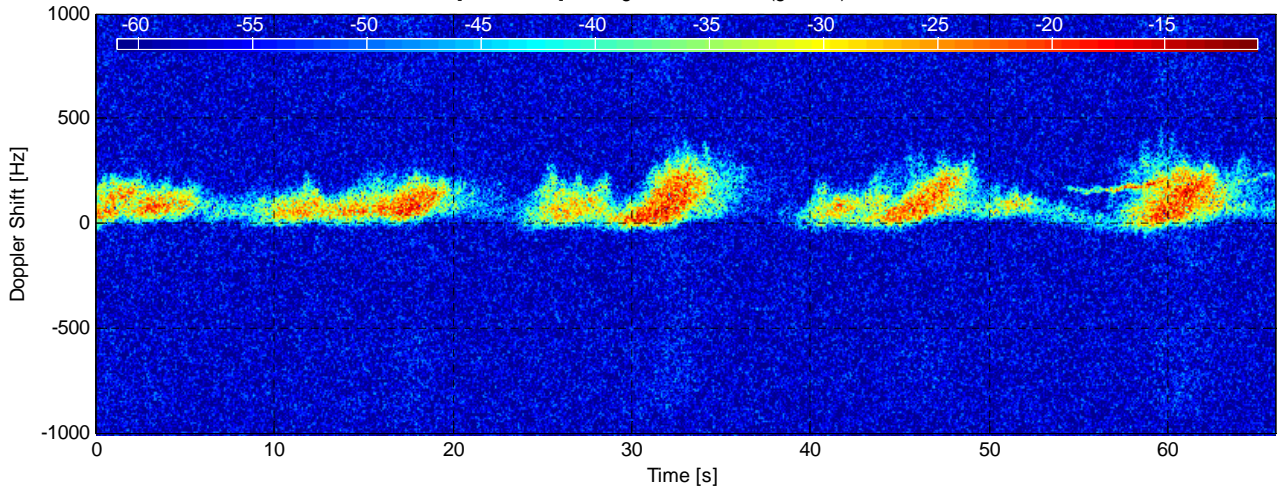
RCS [dBm².Hz⁻¹] at range 3135.3125 m (gate 10) - TFC15-006



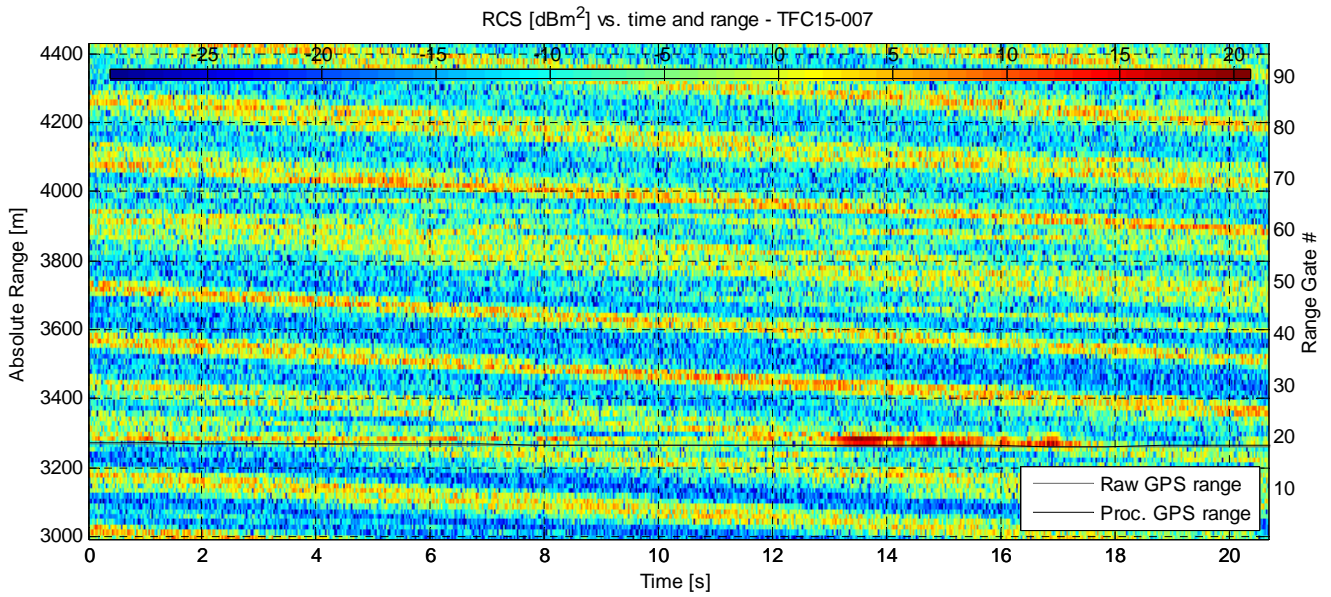
RCS [dBm².Hz⁻¹] at range 3300.3125 m (gate 21) - TFC15-006



RCS [dBm².Hz⁻¹] at range 3330.3125 m (gate 23) - TFC15-006

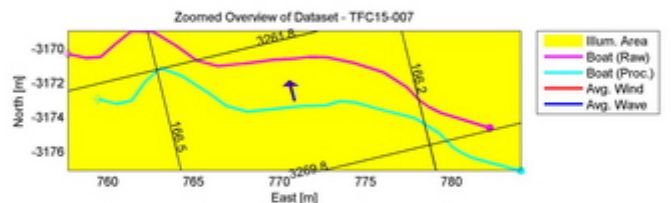
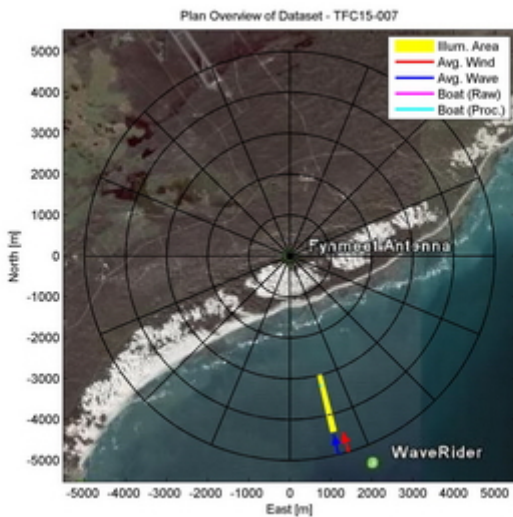


Dataset TFC15-007

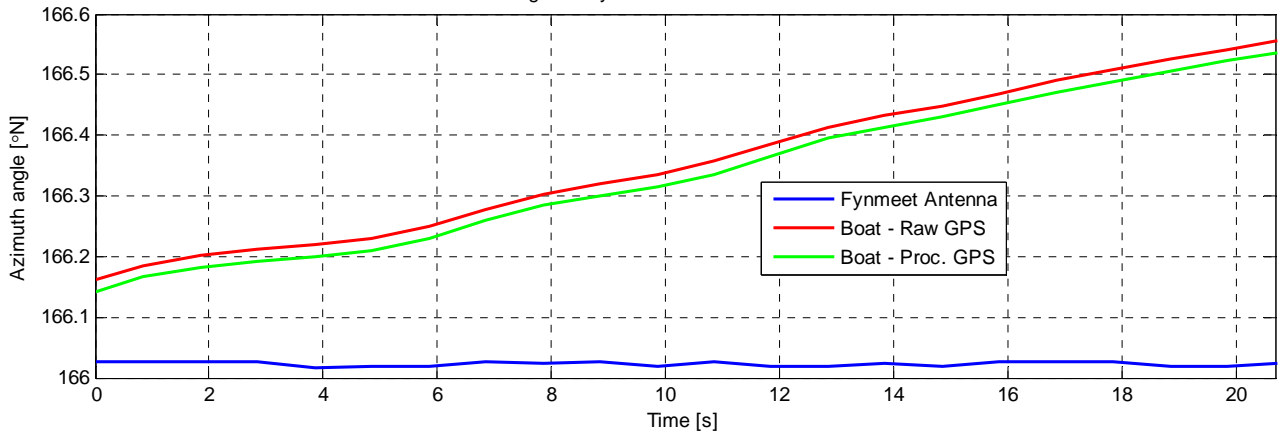


Experiment Summary	Value	Radar Setup	Value
Type	Target	Tx Frequency	9 GHz
Date	01-Aug-2006	PRF	5 kHz
Start Time	13:41:04.150	Tracking Range	3000.31 m
Duration	103430 PRI's (20.6858 s)	Range Extend	1440 m (96 gates), 15 m res.
Original File	PF060801.017	Waveform Type	Fixed Frequency
Original Path	\20060801_ifs_g_extra	Waveform Bandwidth	N/A
Processor Version	FMSCP Ver 01.22	Waveform File	SC_Fixed_256BL.txt

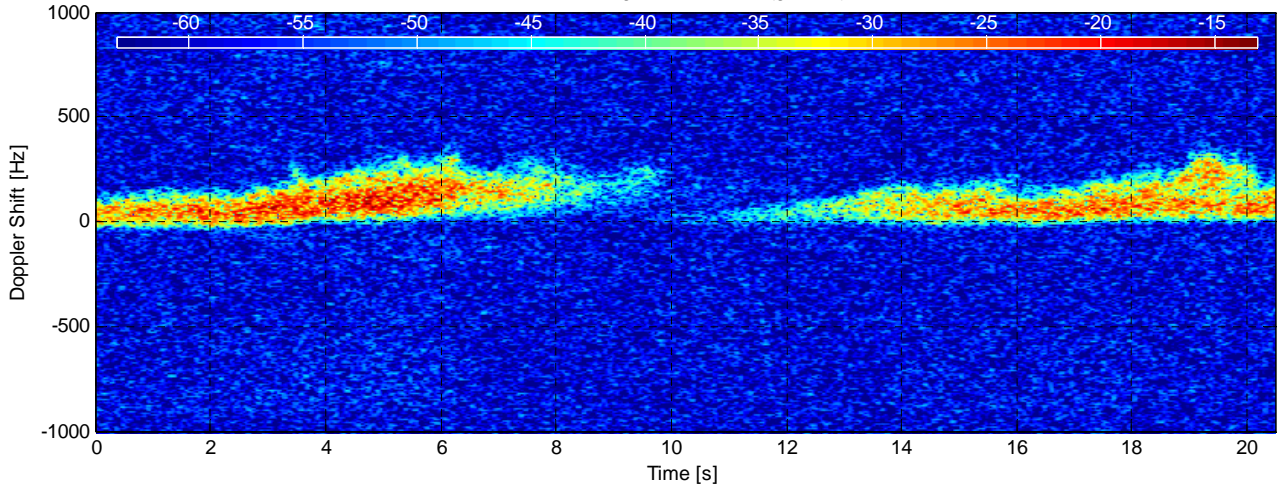
Environment	Value	Geometry	Value	Processing	Value
Inst. Wind	15.7 kts, 163.4 deg. N	Grazing Angle	0.853 - 1.27 deg.	Odd Gates Offset	0.78393+7.0398i
Wind Gust	23.3 kts, 184 deg. N	Antenna Azm.	166 deg. N	Even Gates Offset	7.26663-8.87524i
8hr Avg. Wind	15.8 kts, 166.7 deg. N	Antenna Elv.	-1.187 deg.	I/Q Imbalance	Bypassed
Wave (SWH)	3.22 m, 166.1 deg. N	Antenna BW.	1.8 deg. Az, 1.8 deg. El	Complex Conj.	Applied
		GPS Data	Available	Calibr. Coeff.	190.9 dB



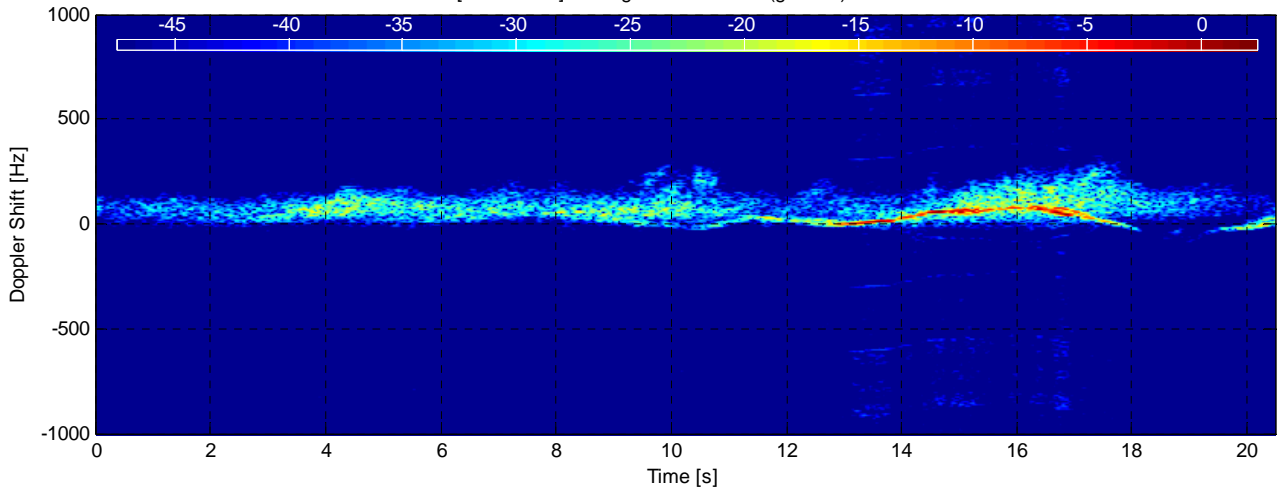
Azimuth Angle for Fynmeet Antenna and Boat - TFC15-007



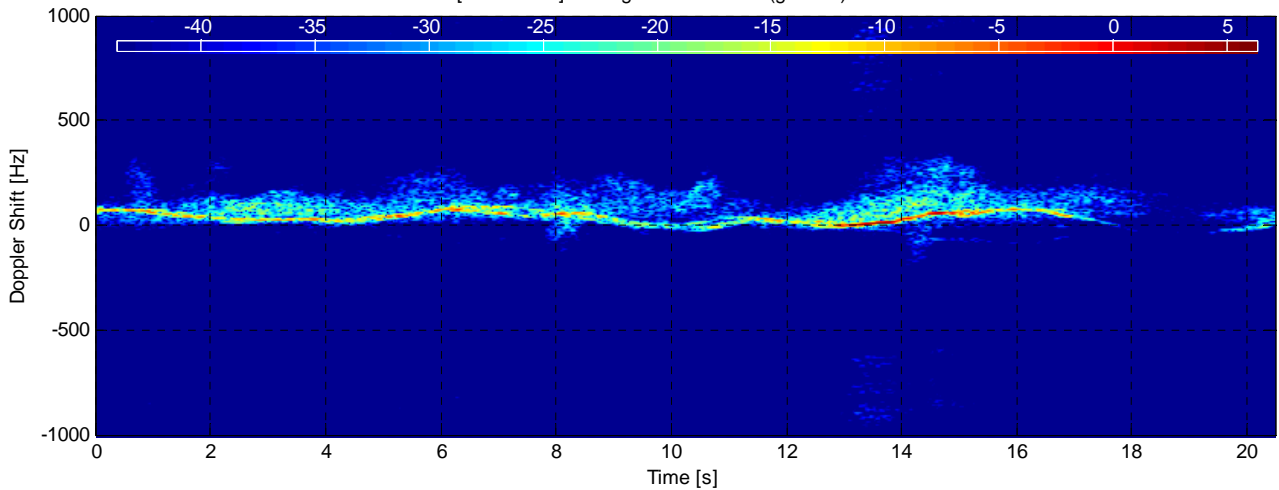
RCS [dBm².Hz⁻¹] at range 3135.3125 m (gate 10) - TFC15-007



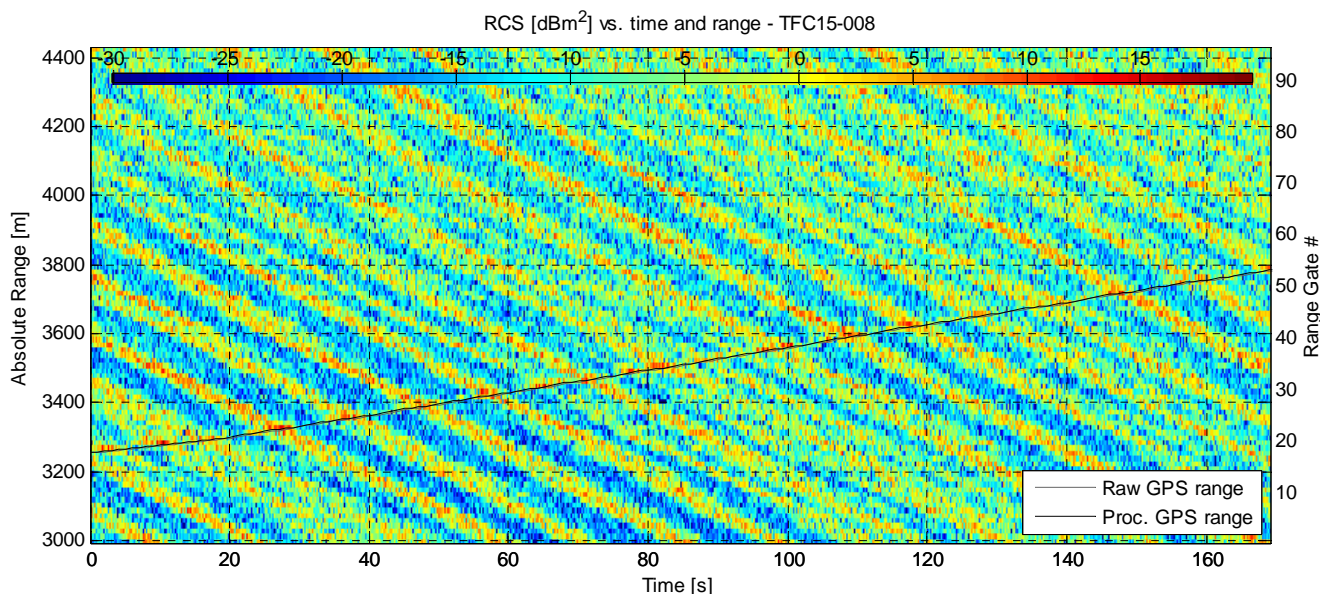
RCS [dBm².Hz⁻¹] at range 3270.3125 m (gate 19) - TFC15-007



RCS [dBm².Hz⁻¹] at range 3285.3125 m (gate 20) - TFC15-007

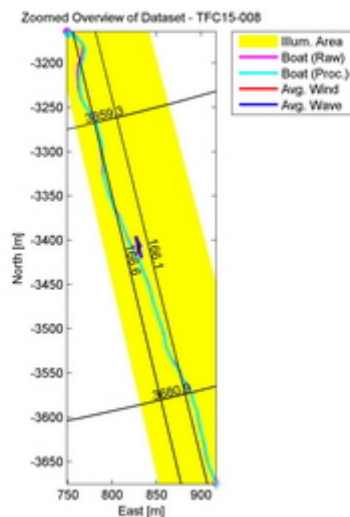
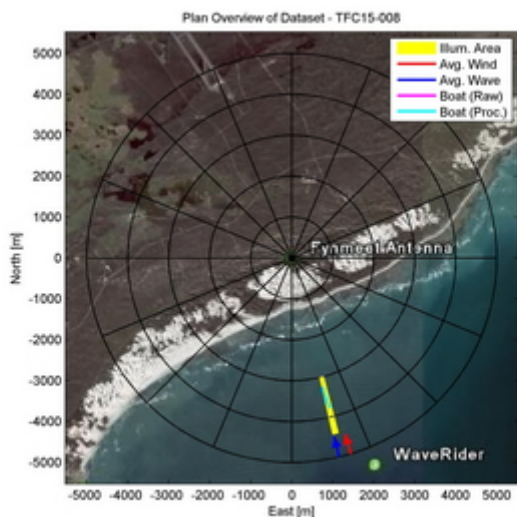


Dataset TFC15-008

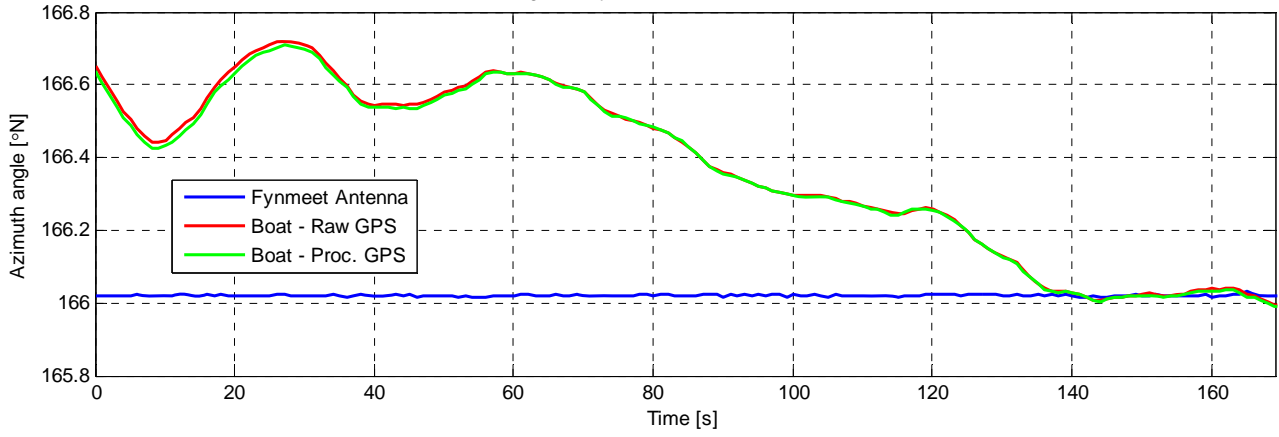


Experiment Summary	Value	Radar Setup	Value
Type	Target	Tx Frequency	9 GHz
Date	01-Aug-2006	PRF	5 kHz
Start Time	13:42:03.921	Tracking Range	3000.31 m
Duration	845555 PRI's (169.1108 s)	Range Extend	1440 m (96 gates), 15 m res.
Original File	PF060801.018	Waveform Type	Fixed Frequency
Original Path	\\20060801_ifs_g_extra_contd_2	Waveform Bandwidth	N/A
Processor Version	FMSCP Ver 01.22	Waveform File	SC_Fixed_256BL.txt

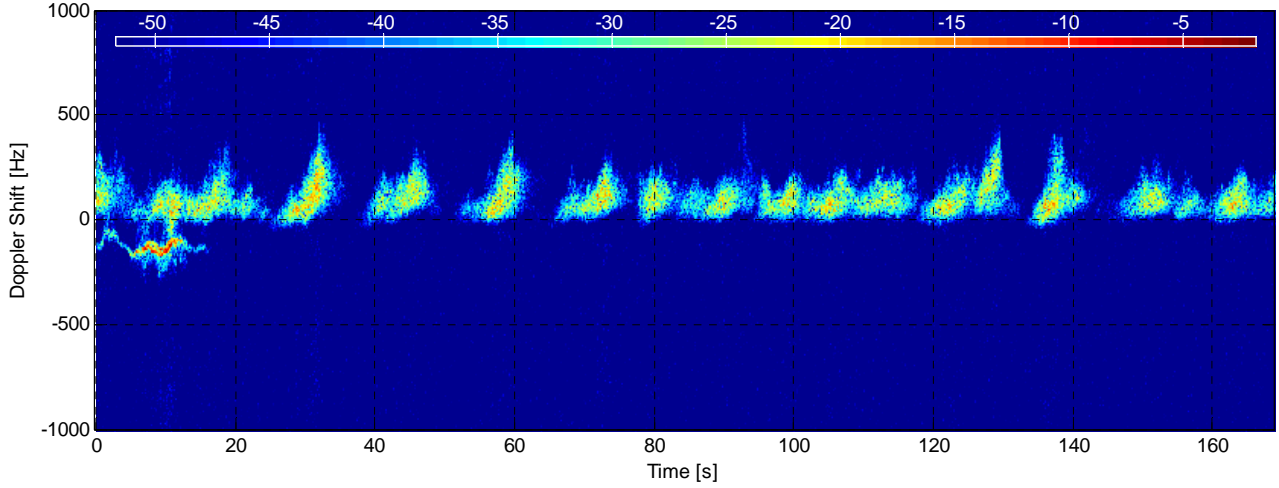
Environment	Value	Geometry	Value	Processing	Value
Inst. Wind	15.7 kts, 163.3 deg. N	Grazing Angle	0.853 - 1.27 deg.	Odd Gates Offset	0.6551+6.7423i
Wind Gust	23.3 kts, 184 deg. N	Antenna Azm.	166 deg. N	Even Gates Offset	7.05522-8.83409i
8hr Avg. Wind	15.8 kts, 166.7 deg. N	Antenna Elv.	-1.187 deg.	I/Q Imbalance	Bypassed
Wave (SWH)	3.21 m, 166.3 deg. N	Antenna BW.	1.8 deg. Az, 1.8 deg. El	Complex Conj.	Applied
		GPS Data	Available	Calibr. Coeff.	190.9 dB



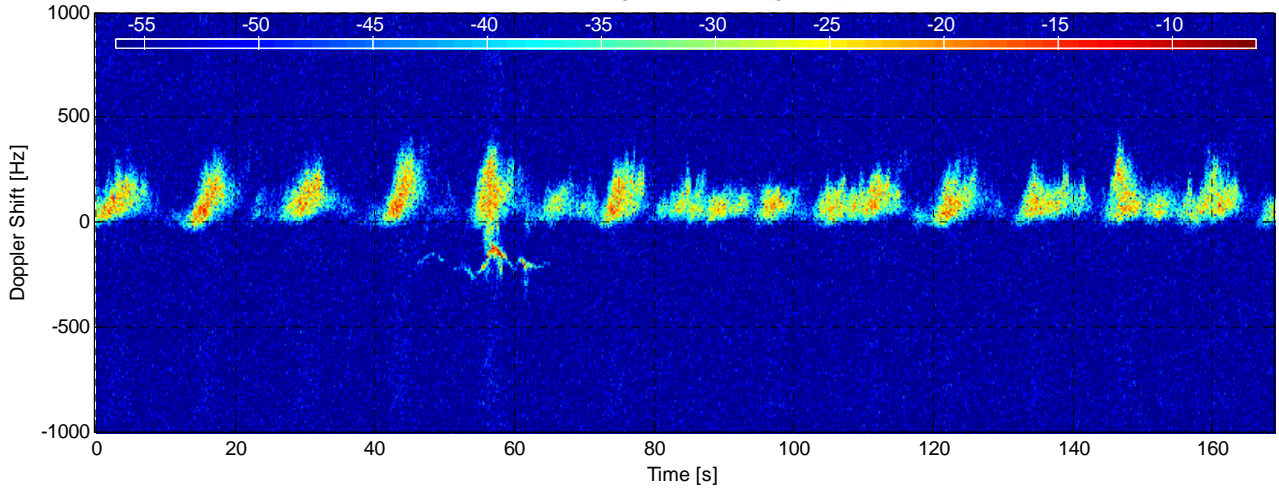
Azimuth Angle for Fynmeet Antenna and Boat - TFC15-008



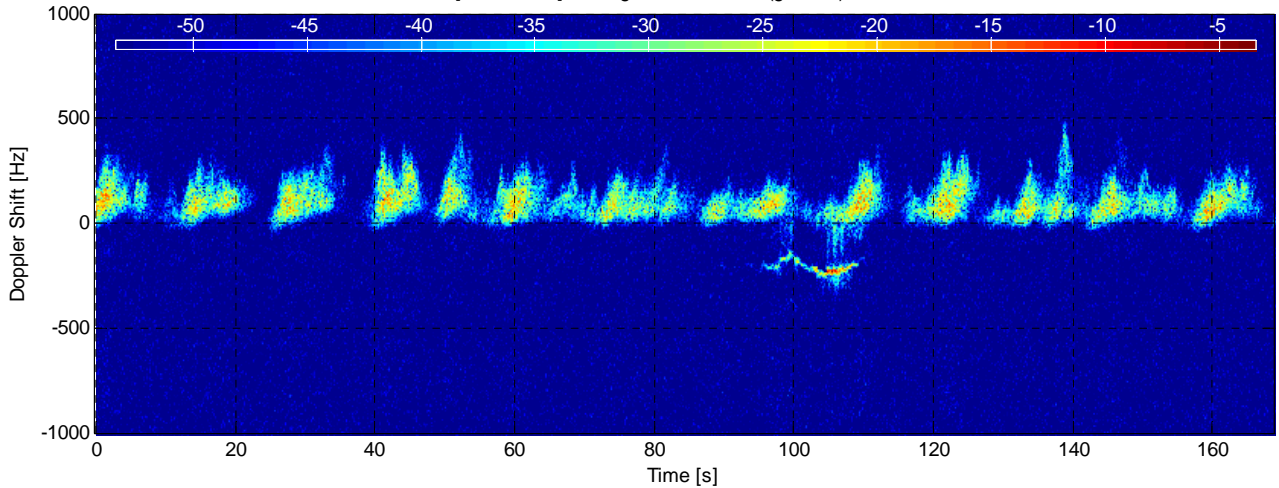
RCS [dBm².Hz⁻¹] at range 3285.3125 m (gate 20) - TFC15-008



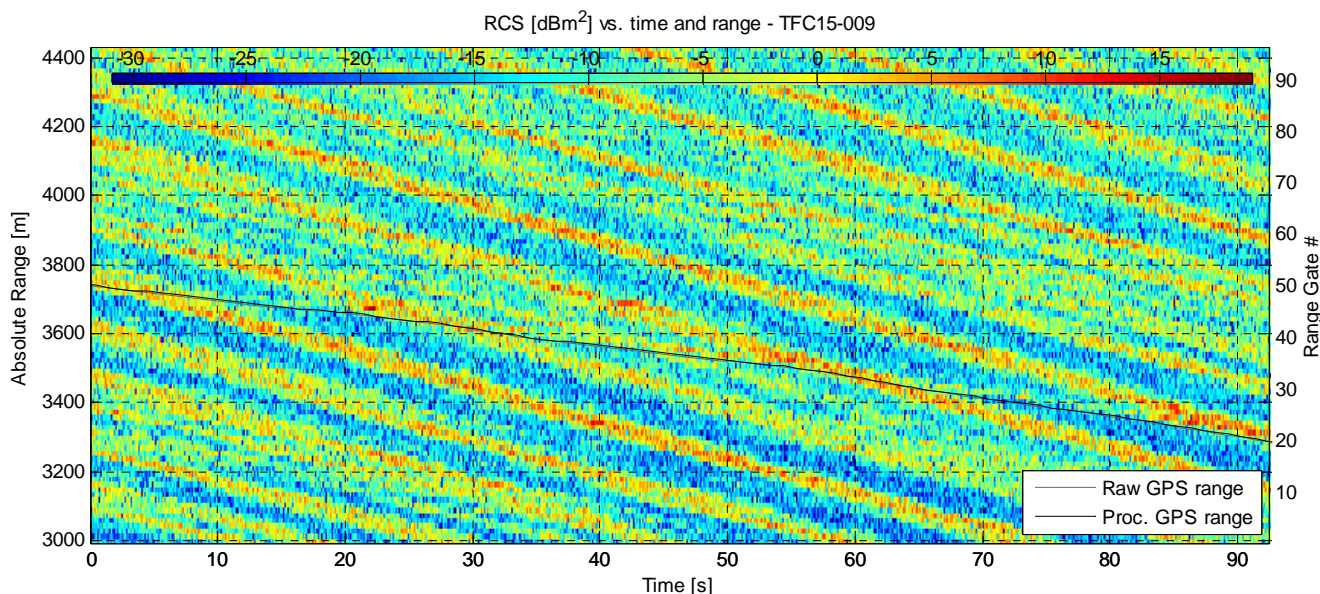
RCS [dBm².Hz⁻¹] at range 3435.3125 m (gate 30) - TFC15-008



RCS [dBm².Hz⁻¹] at range 3585.3125 m (gate 40) - TFC15-008

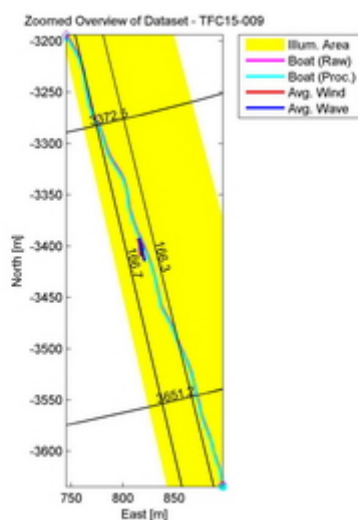
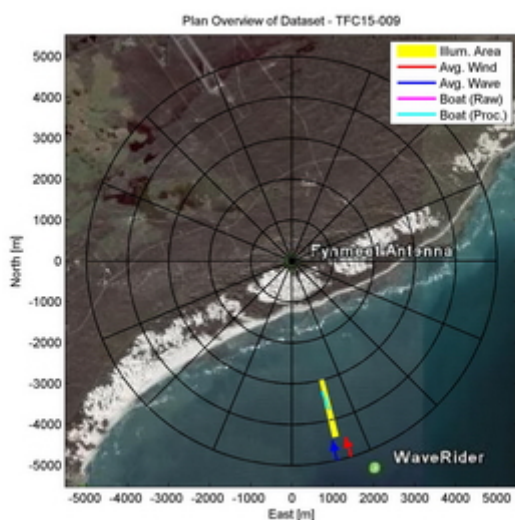


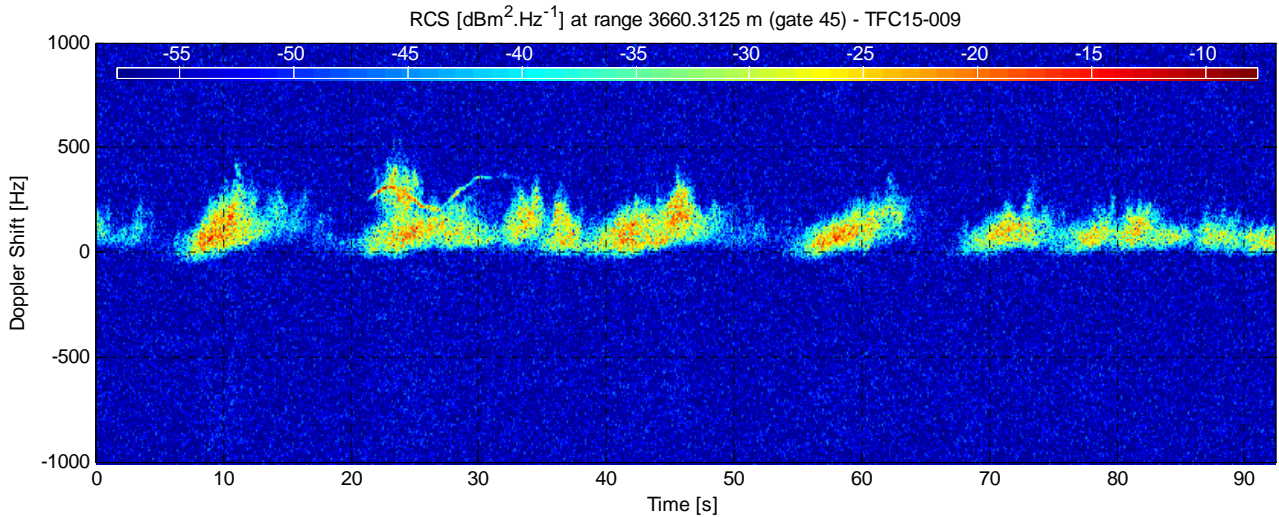
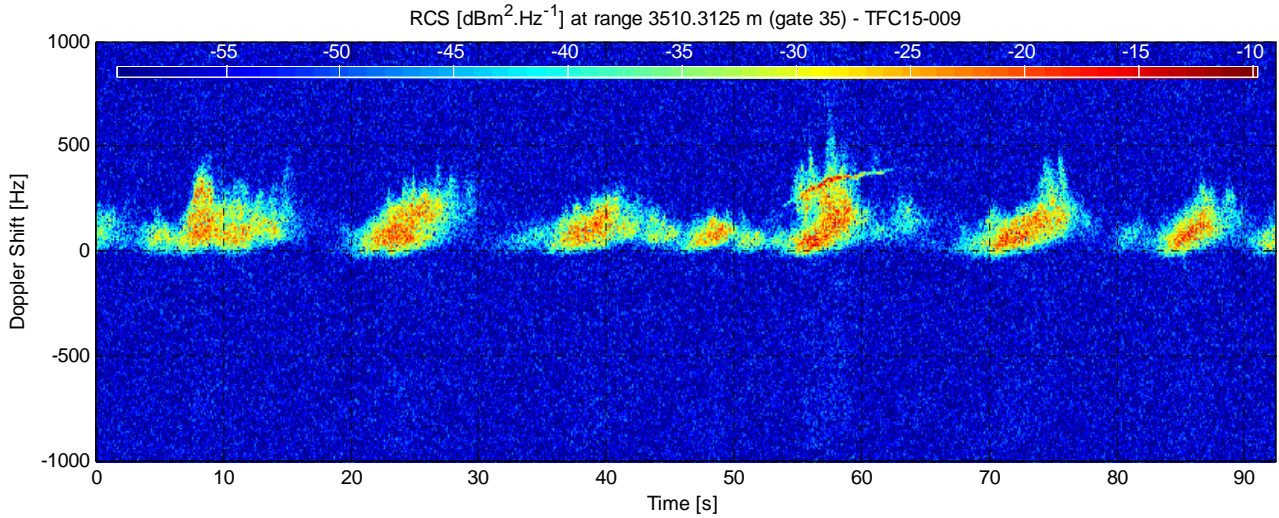
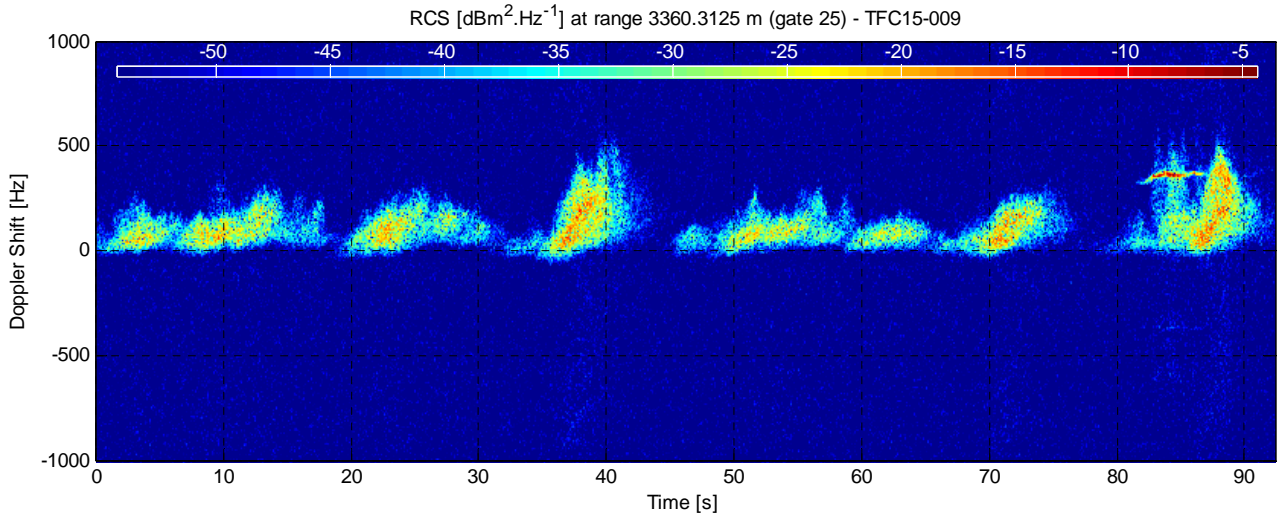
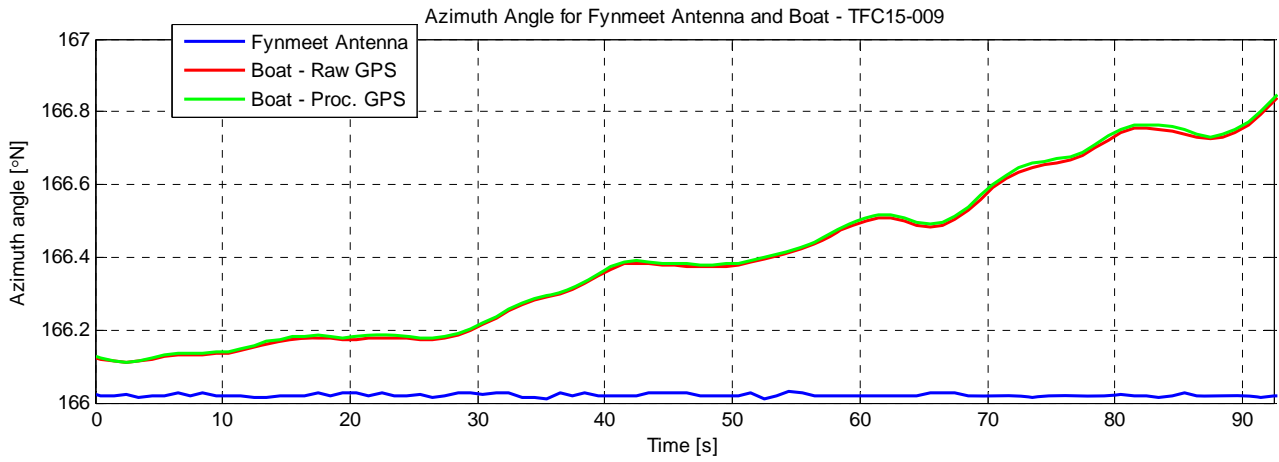
Dataset TFC15-009



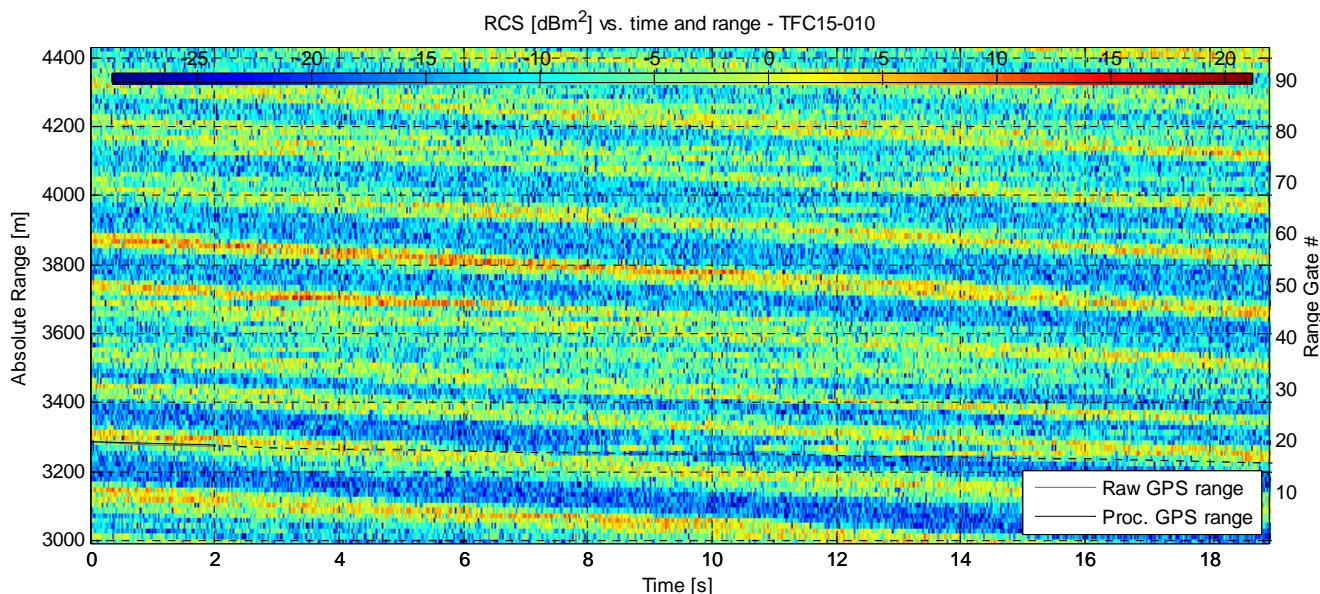
Experiment Summary	Value	Radar Setup	Value
Type	Target	Tx Frequency	9 GHz
Date	01-Aug-2006	PRF	5 kHz
Start Time	13:45:56.546	Tracking Range	3000.31 m
Duration	462800 PRI's (92.5598 s)	Range Extend	1440 m (96 gates), 15 m res.
Original File	PF060801.019	Waveform Type	Fixed Frequency
Original Path	\\20060801_ifs_g_extra_contd_2	Waveform Bandwidth	N/A
Processor Version	FMSCP Ver 01.22	Waveform File	SC_Fixed_256BL.txt

Environment	Value	Geometry	Value	Processing	Value
Inst. Wind	15.6 kts, 163.2 deg. N	Grazing Angle	0.853 - 1.27 deg.	Odd Gates Offset	0.65157+6.8568i
Wind Gust	23.3 kts, 184 deg. N	Antenna Azm.	166 deg. N	Even Gates Offset	7.2114-8.94461i
8hr Avg. Wind	15.8 kts, 166.7 deg. N	Antenna Elv.	-1.187 deg.	I/Q Imbalance	Bypassed
Wave (SWH)	3.2 m, 167 deg. N	Antenna BW.	1.8 deg. Az, 1.8 deg. El	Complex Conj.	Applied
		GPS Data	Available	Calibr. Coeff.	190.9 dB



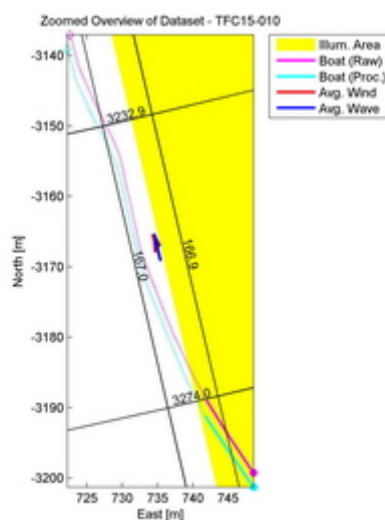
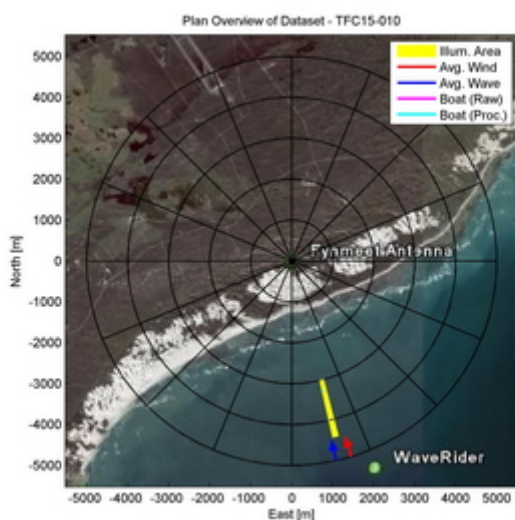


Dataset TFC15-010

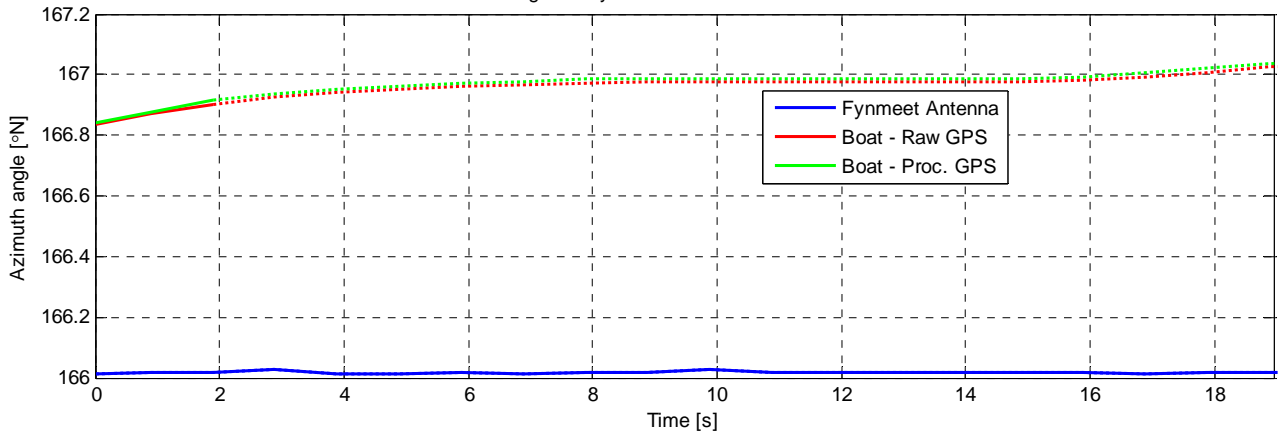


Experiment Summary	Value	Radar Setup	Value
Type	Target	Tx Frequency	9 GHz
Date	01-Aug-2006	PRF	5 kHz
Start Time	13:47:29.114	Tracking Range	3000.31 m
Duration	94879 PRI's (18.9756 s)	Range Extend	1440 m (96 gates), 15 m res.
Original File	PF060801.019	Waveform Type	Fixed Frequency
Original Path	\20060801_ifs_g_extra_contd_2	Waveform Bandwidth	N/A
Processor Version	FMSCP Ver 01.22	Waveform File	SC_Fixed_256BL.txt

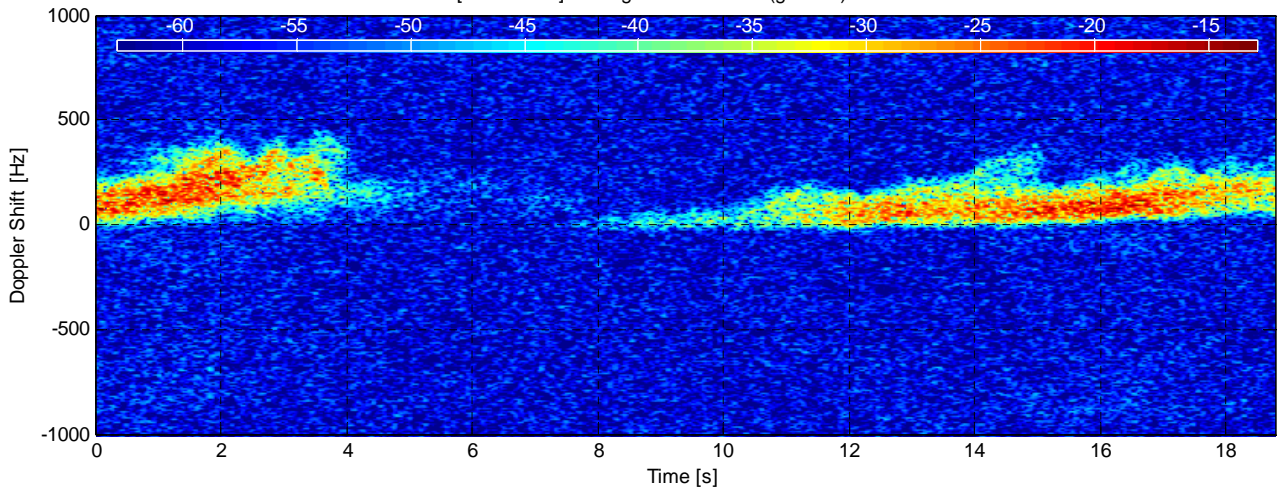
Environment	Value	Geometry	Value	Processing	Value
Inst. Wind	15.6 kts, 163.1 deg. N	Grazing Angle	0.853 - 1.27 deg.	Odd Gates Offset	0.63583+6.9407i
Wind Gust	23.3 kts, 184 deg. N	Antenna Azm.	166 deg. N	Even Gates Offset	7.17495-8.91472i
8hr Avg. Wind	15.8 kts, 166.7 deg. N	Antenna Elv.	-1.187 deg.	I/Q Imbalance	Bypassed
Wave (SWH)	3.19 m, 167.4 deg. N	Antenna BW.	1.8 deg. Az, 1.8 deg. El	Complex Conj.	Applied
		GPS Data	Available	Calibr. Coeff.	190.9 dB



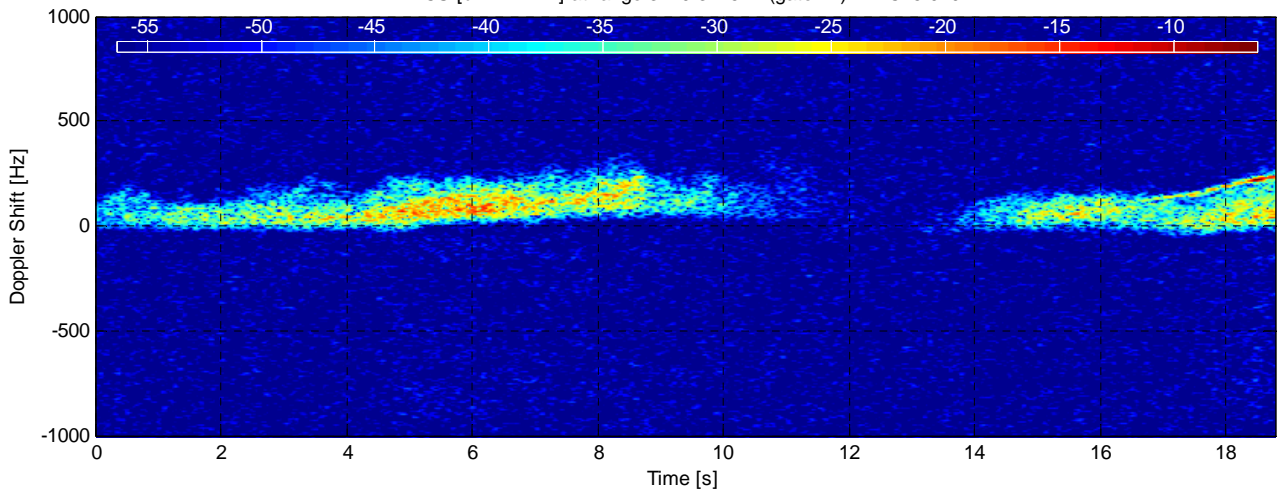
Azimuth Angle for Fynmeet Antenna and Boat - TFC15-010



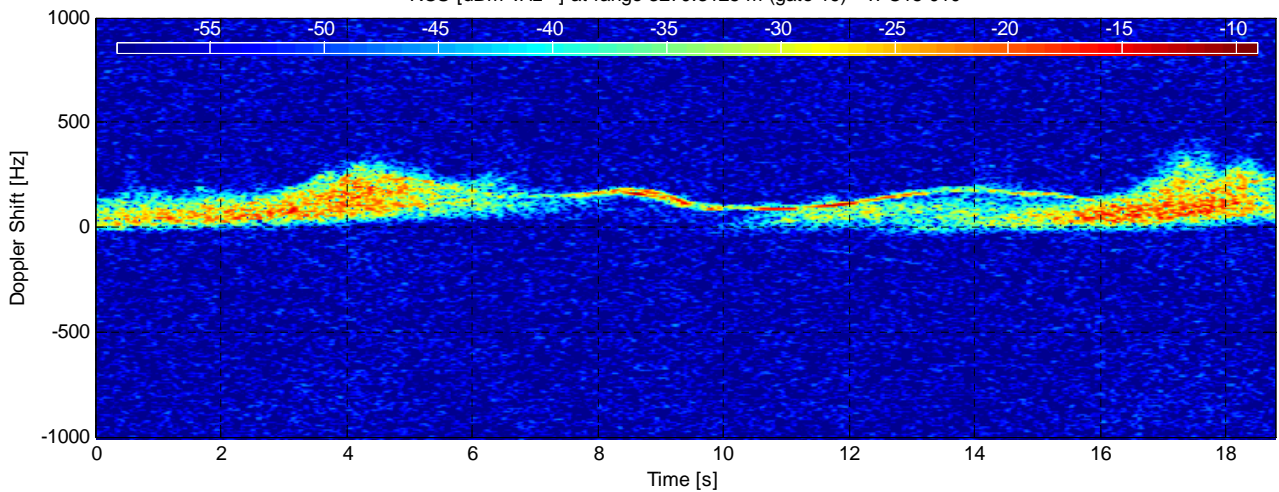
RCS [dBm².Hz⁻¹] at range 3135.3125 m (gate 10) - TFC15-010



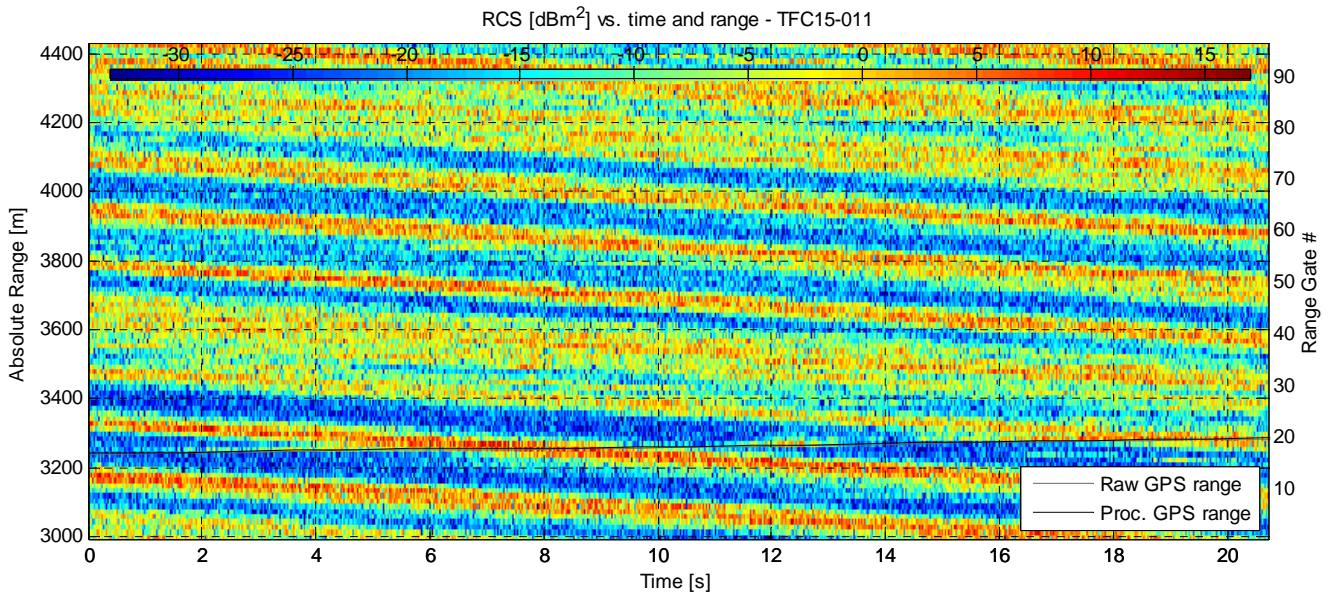
RCS [dBm².Hz⁻¹] at range 3240.3125 m (gate 17) - TFC15-010



RCS [dBm².Hz⁻¹] at range 3270.3125 m (gate 19) - TFC15-010

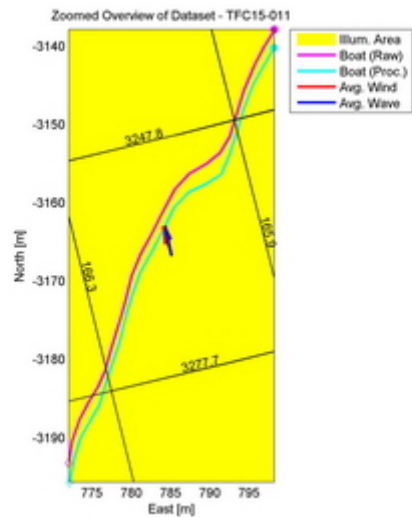
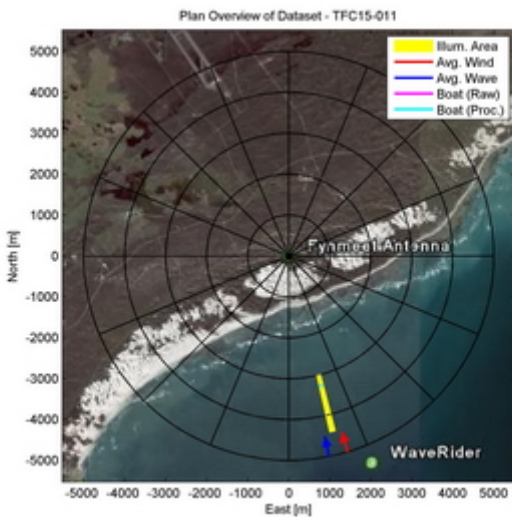


Dataset TFC15-011

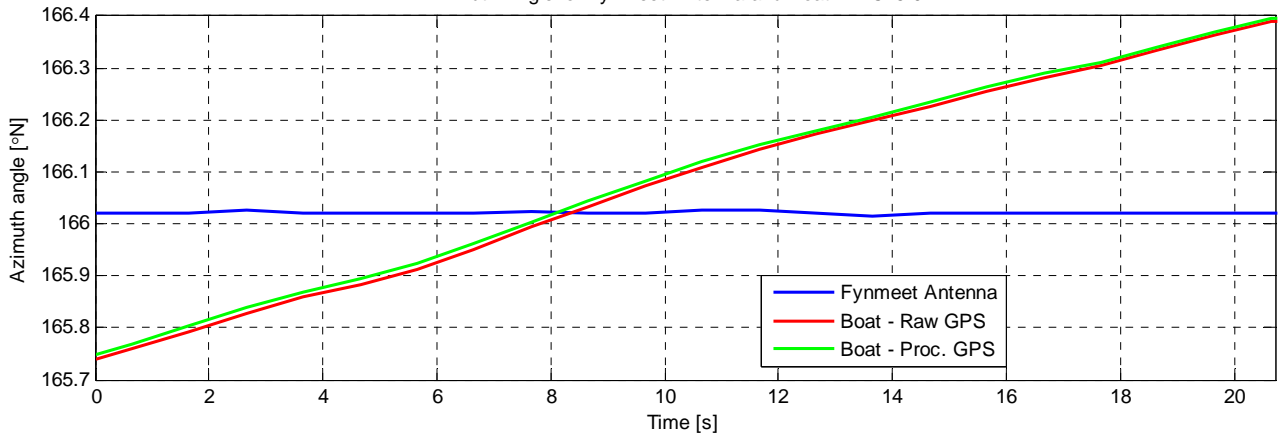


Experiment Summary	Value	Radar Setup	Value
Type	Target	Tx Frequency	9 GHz
Date	01-Aug-2006	PRF	5 kHz
Start Time	13:54:35.343	Tracking Range	3000.31 m
Duration	103600 PRI's (20.7198 s)	Range Extend	1440 m (96 gates), 15 m res.
Original File	PF060801.020	Waveform Type	Fixed Frequency
Original Path	\\20060801_ifs_g_extra_contd_2	Waveform Bandwidth	N/A
Processor Version	FMSCP Ver 01.22	Waveform File	SC_Fixed_256BL.txt

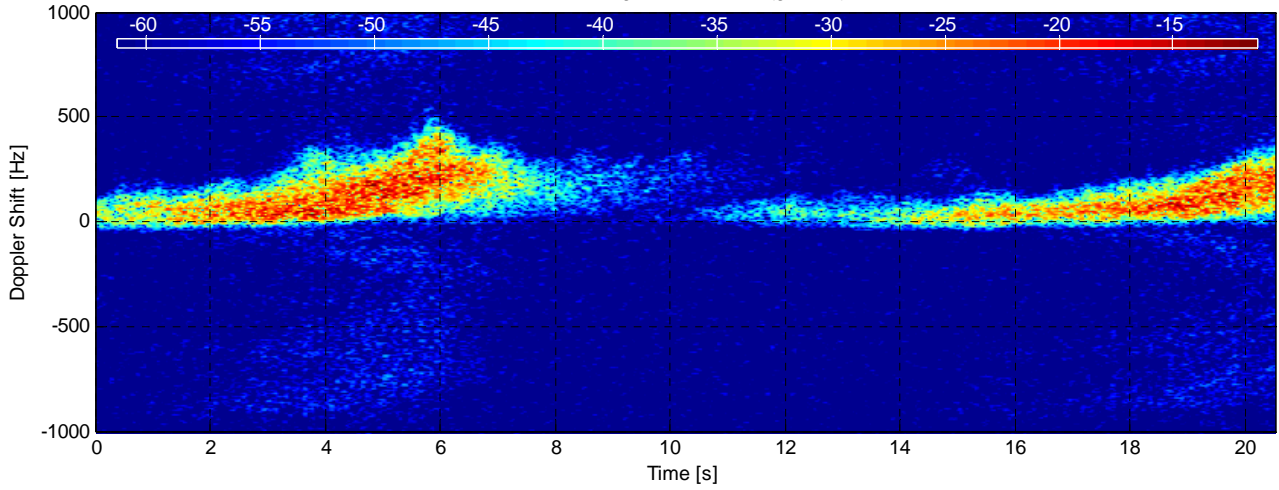
Environment	Value	Geometry	Value	Processing	Value
Inst. Wind	15.5 kts, 163.3 deg. N	Grazing Angle	0.853 - 1.27 deg.	Odd Gates Offset	0.84573+6.5725i
Wind Gust	23.3 kts, 184 deg. N	Antenna Azm.	166 deg. N	Even Gates Offset	7.23713-8.93009i
8hr Avg. Wind	15.8 kts, 166.5 deg. N	Antenna Elv.	-1.187 deg.	I/Q Imbalance	Bypassed
Wave (SWH)	3.16 m, 168.6 deg. N	Antenna BW.	1.8 deg. Az, 1.8 deg. El	Complex Conj.	Applied
		GPS Data	Available	Calibr. Coeff.	190.9 dB



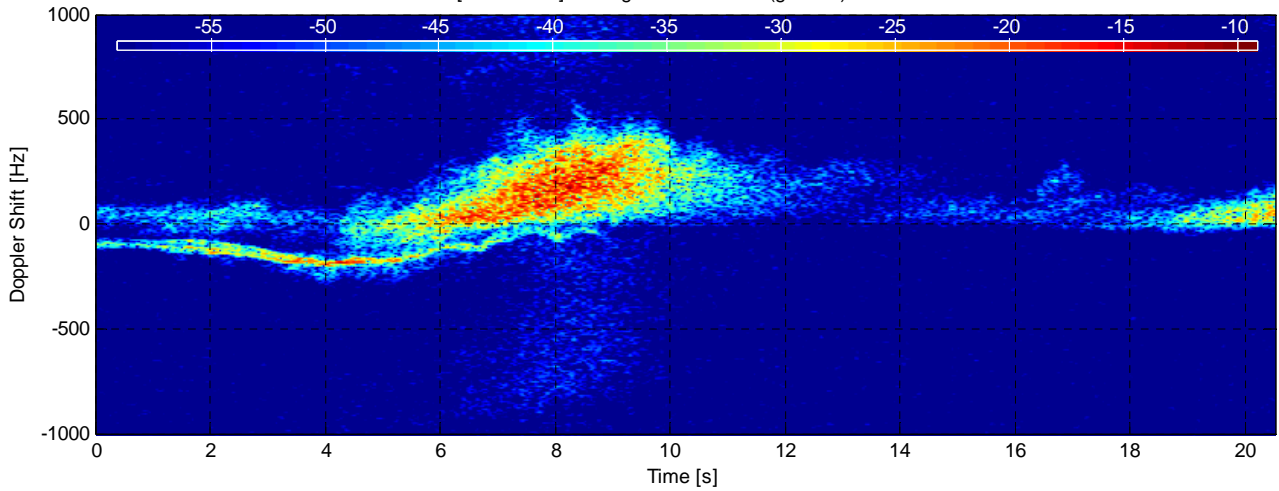
Azimuth Angle for Fynmeet Antenna and Boat - TFC15-011



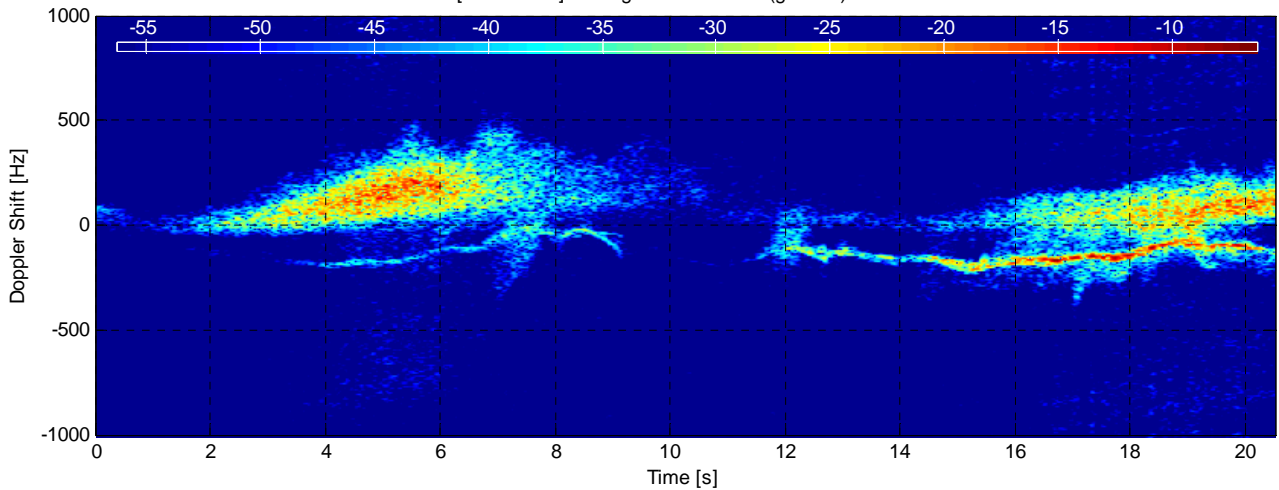
RCS [dBm².Hz⁻¹] at range 3135.3125 m (gate 10) - TFC15-011



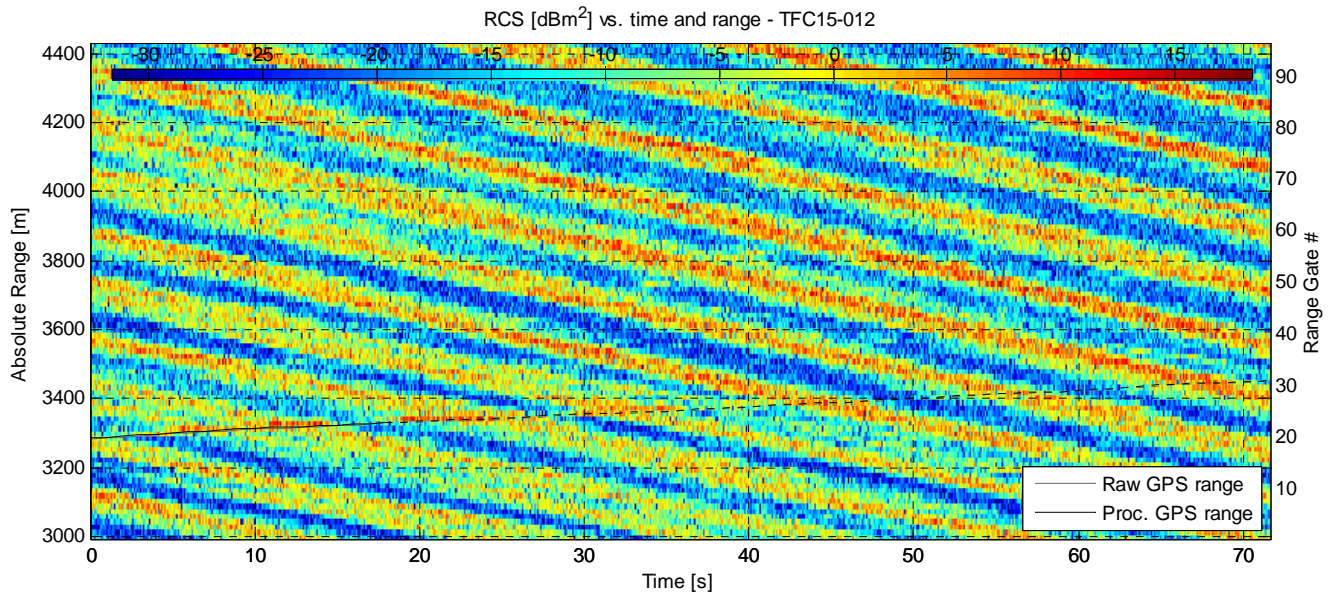
RCS [dBm².Hz⁻¹] at range 3255.3125 m (gate 18) - TFC15-011



RCS [dBm².Hz⁻¹] at range 3285.3125 m (gate 20) - TFC15-011

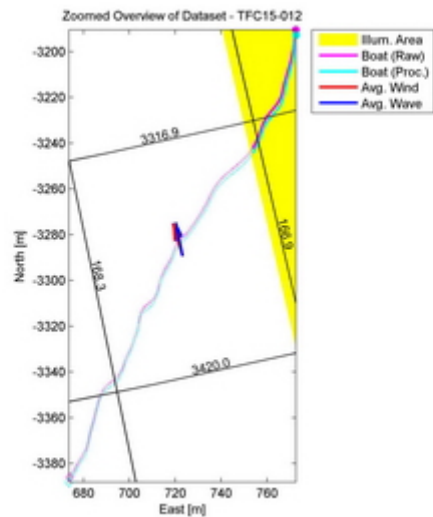
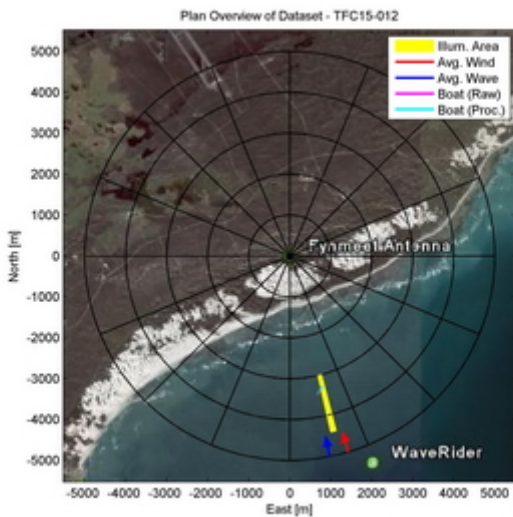


Dataset TFC15-012

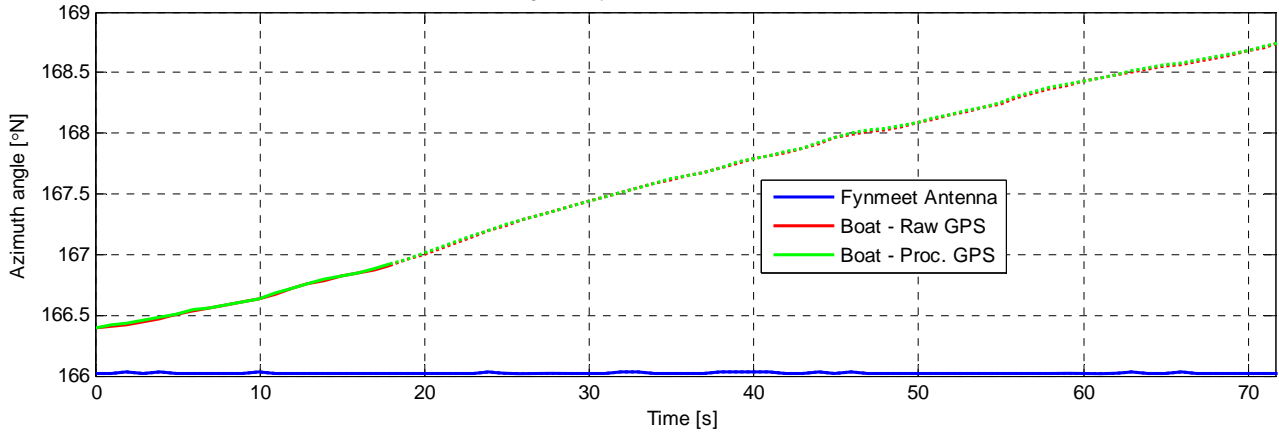


Experiment Summary	Value	Radar Setup	Value
Type	Target	Tx Frequency	9 GHz
Date	01-Aug-2006	PRF	5 kHz
Start Time	13:54:56.071	Tracking Range	3000.31 m
Duration	358240 PRI's (71.6478 s)	Range Extend	1440 m (96 gates), 15 m res.
Original File	PF060801.020	Waveform Type	Fixed Frequency
Original Path	\\20060801_ifs_g_extra_contd_2	Waveform Bandwidth	N/A
Processor Version	FMSCP Ver 01.22	Waveform File	SC_Fixed_256BL.txt

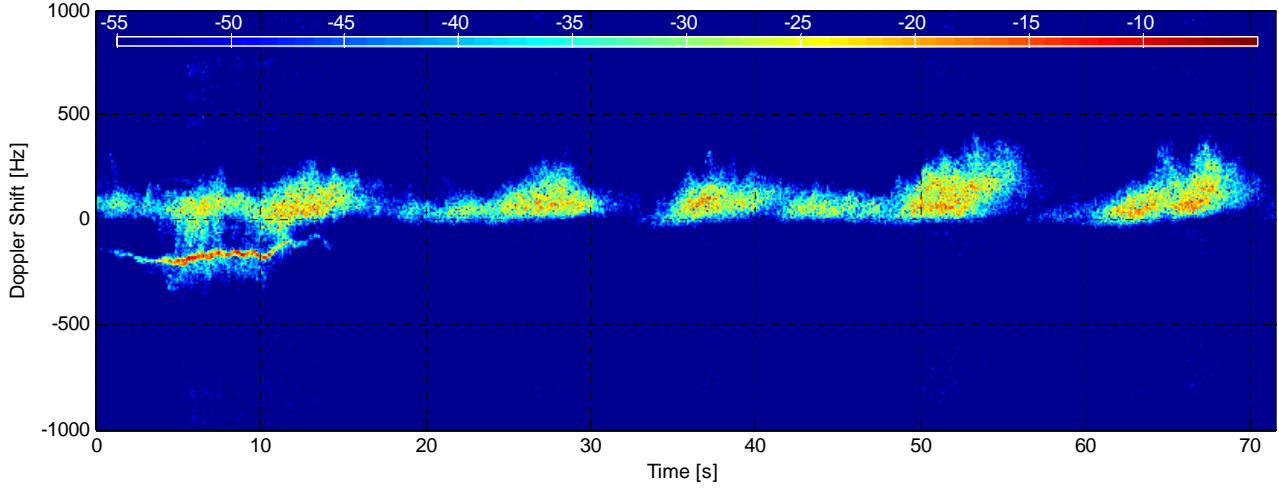
Environment	Value	Geometry	Value	Processing	Value
Inst. Wind	15.5 kts, 163.3 deg. N	Grazing Angle	0.853 - 1.27 deg.	Odd Gates Offset	0.72535+6.8062i
Wind Gust	23.3 kts, 184 deg. N	Antenna Azm.	166 deg. N	Even Gates Offset	7.24618-8.87867i
8hr Avg. Wind	15.8 kts, 166.5 deg. N	Antenna Elv.	-1.187 deg.	I/Q Imbalance	Bypassed
Wave (SWH)	3.16 m, 168.6 deg. N	Antenna BW.	1.8 deg. Az, 1.8 deg. El	Complex Conj.	Applied
		GPS Data	Available	Calibr. Coeff.	190.9 dB



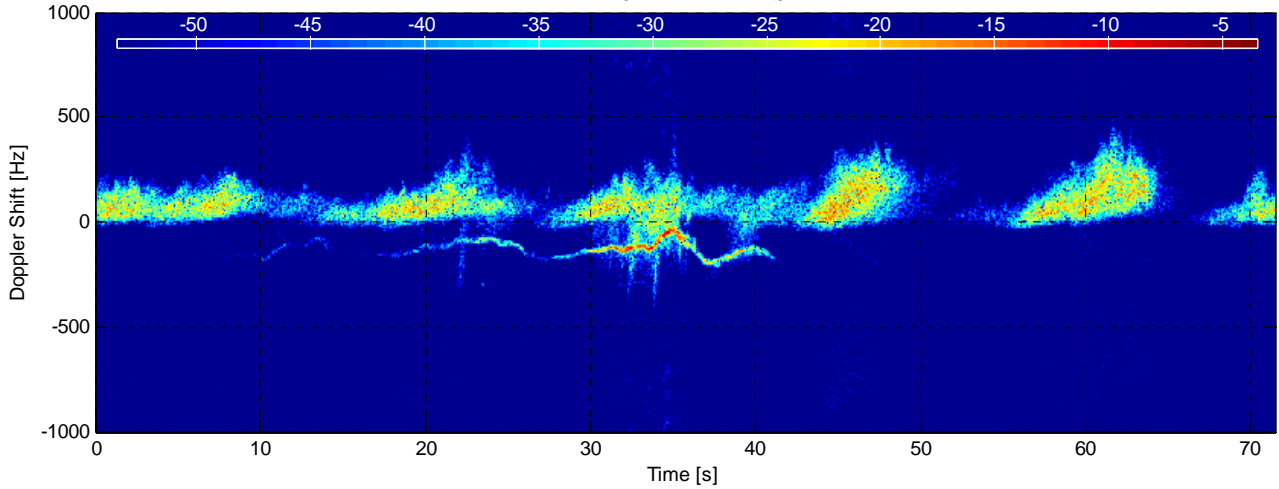
Azimuth Angle for Fynmeet Antenna and Boat - TFC15-012



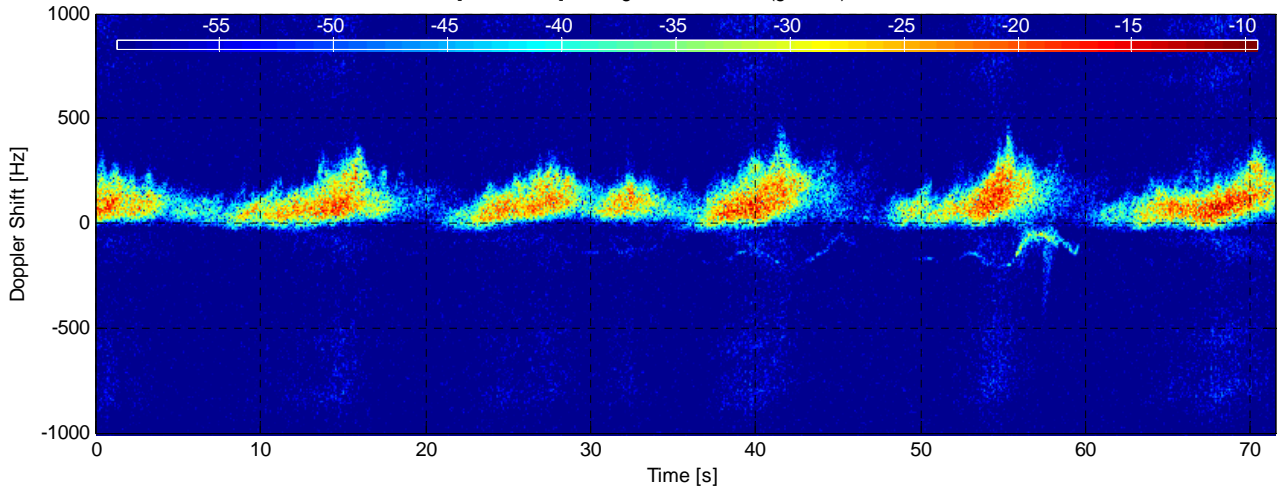
RCS [dBm².Hz⁻¹] at range 3315.3125 m (gate 22) - TFC15-012



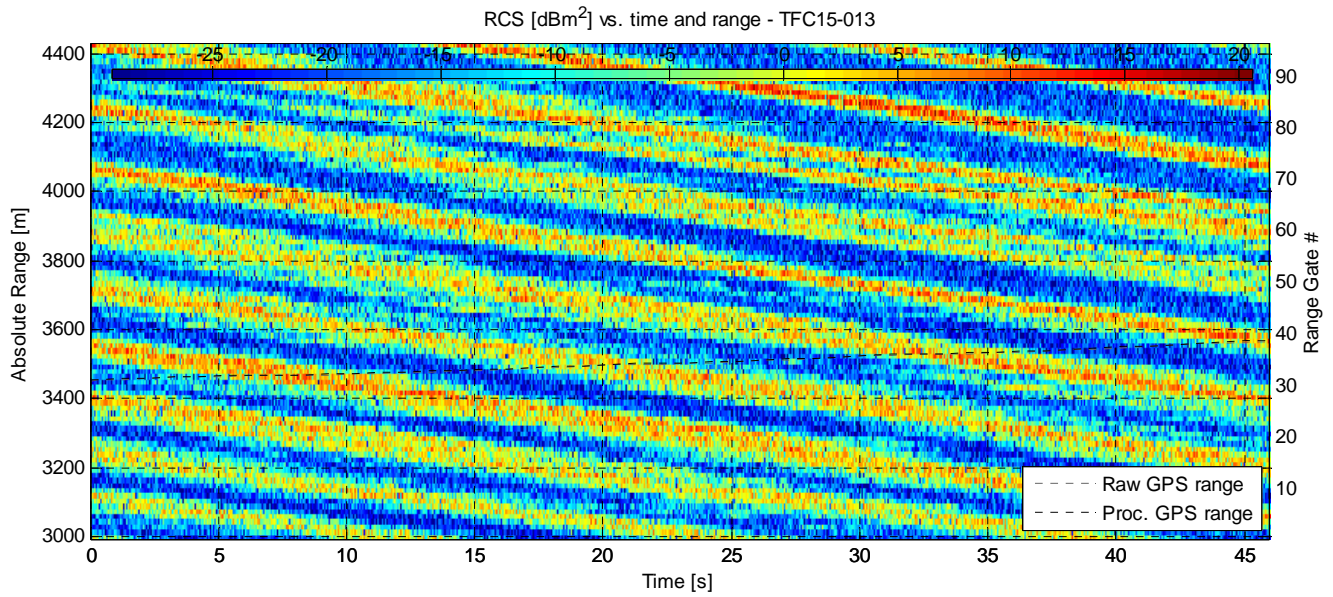
RCS [dBm².Hz⁻¹] at range 3375.3125 m (gate 26) - TFC15-012



RCS [dBm².Hz⁻¹] at range 3435.3125 m (gate 30) - TFC15-012

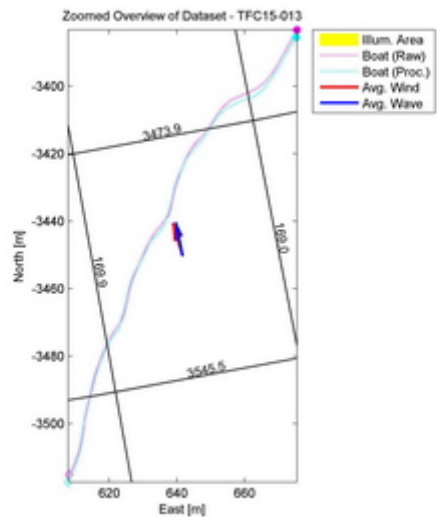
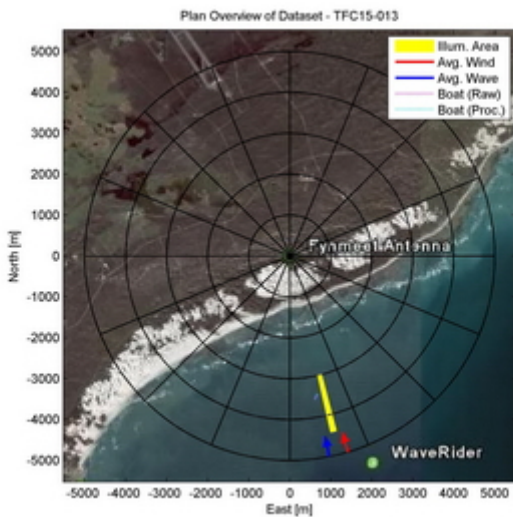


Dataset TFC15-013

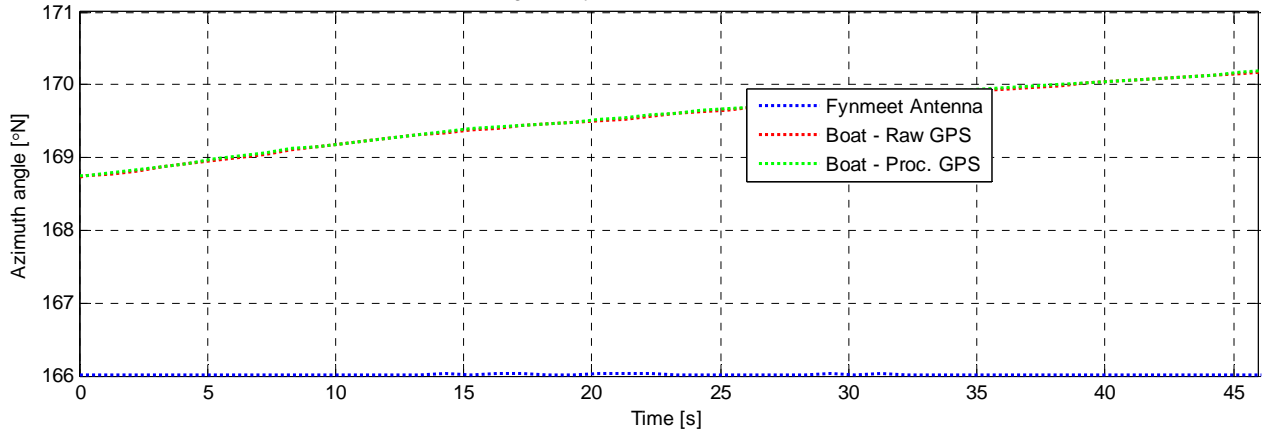


Experiment Summary	Value	Radar Setup	Value
Type	Target	Tx Frequency	9 GHz
Date	01-Aug-2006	PRF	5 kHz
Start Time	13:56:07.727	Tracking Range	3000.31 m
Duration	230039 PRI's (46.0076 s)	Range Extend	1440 m (96 gates), 15 m res.
Original File	PF060801.020	Waveform Type	Fixed Frequency
Original Path	\\20060801_ifs_g_extra_contd_2	Waveform Bandwidth	N/A
Processor Version	FMSCP Ver 01.22	Waveform File	SC_Fixed_256BL.txt

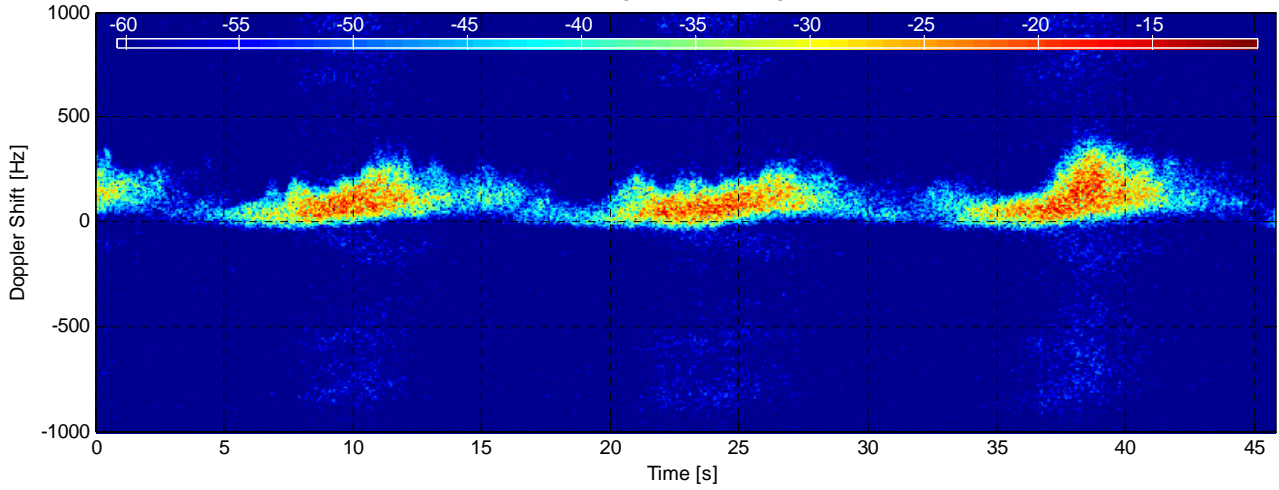
Environment	Value	Geometry	Value	Processing	Value
Inst. Wind	15.4 kts, 163.4 deg. N	Grazing Angle	0.853 - 1.27 deg.	Odd Gates Offset	0.76301+6.7991i
Wind Gust	23.3 kts, 184 deg. N	Antenna Azm.	166 deg. N	Even Gates Offset	7.14407-8.62511i
8hr Avg. Wind	15.8 kts, 166.5 deg. N	Antenna Elv.	-1.187 deg.	I/Q Imbalance	Bypassed
Wave (SWH)	3.15 m, 168.8 deg. N	Antenna BW.	1.8 deg. Az, 1.8 deg. El	Complex Conj.	Applied
		GPS Data	Available	Calibr. Coeff.	190.9 dB



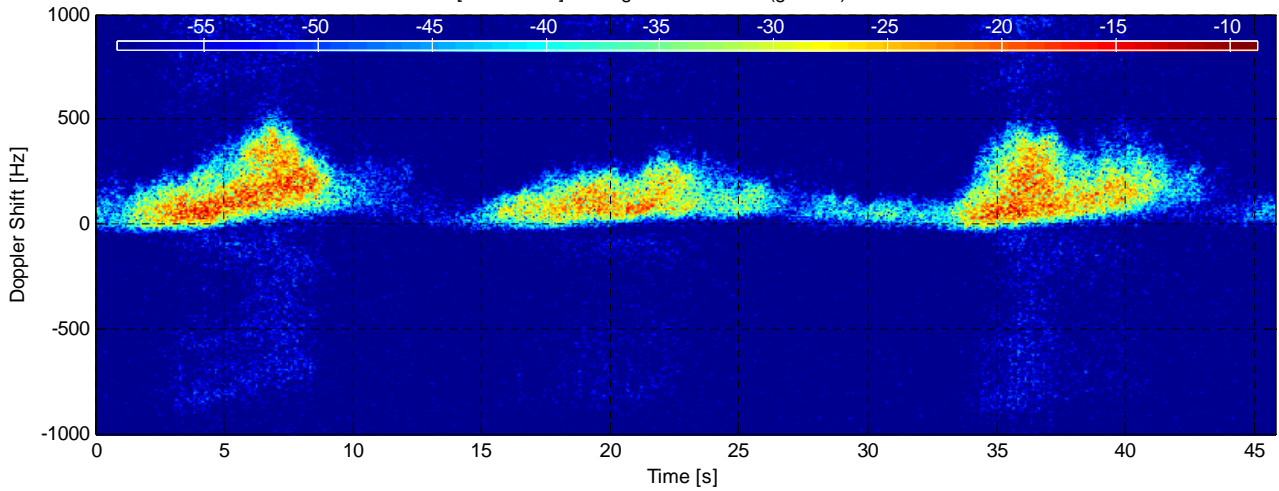
Azimuth Angle for Fynmeet Antenna and Boat - TFC15-013



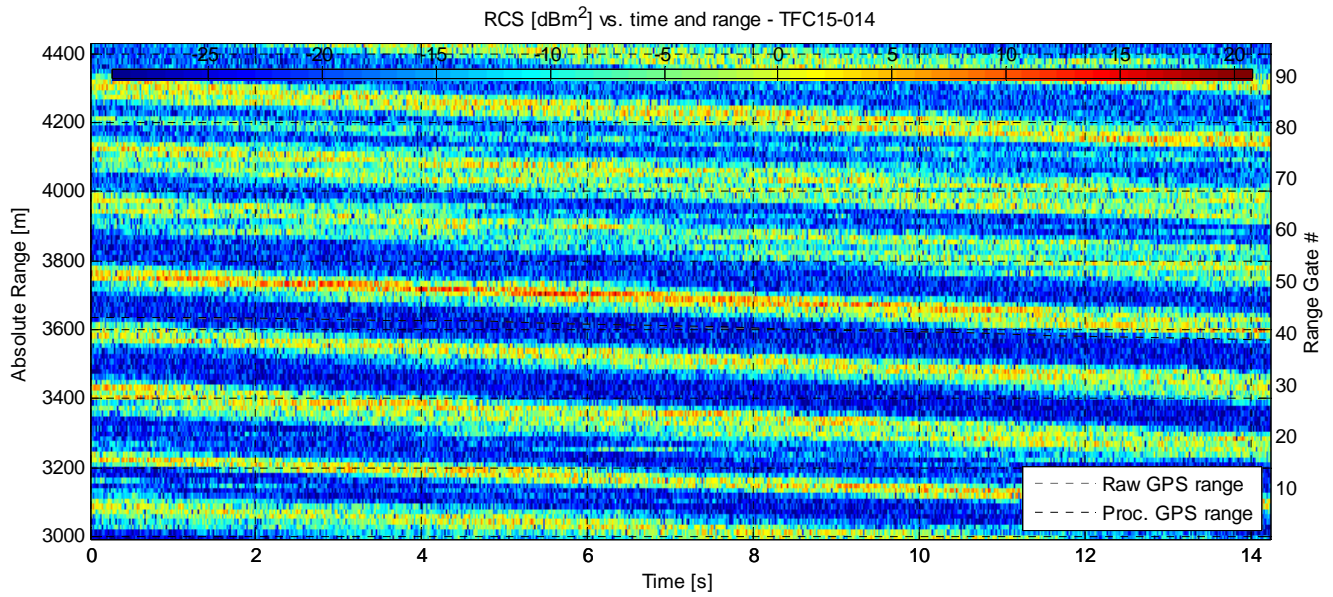
RCS [dBm².Hz⁻¹] at range 3135.3125 m (gate 10) - TFC15-013



RCS [dBm².Hz⁻¹] at range 3495.3125 m (gate 34) - TFC15-013

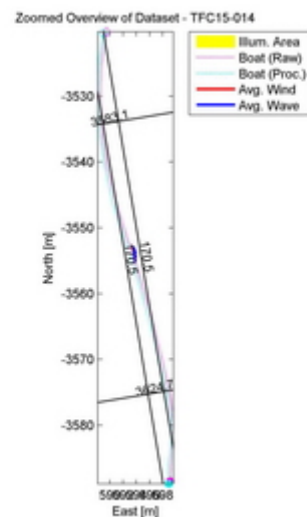
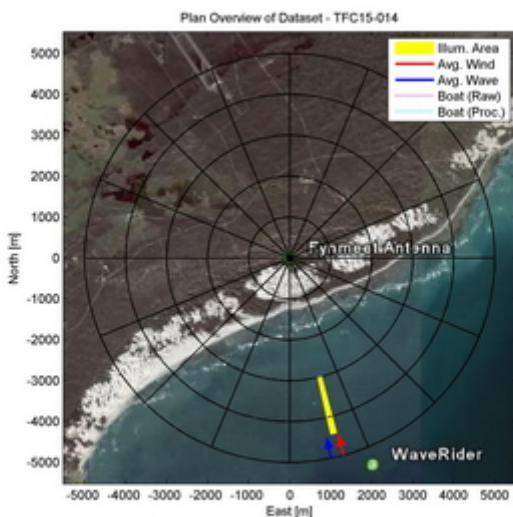


Dataset TFC15-014

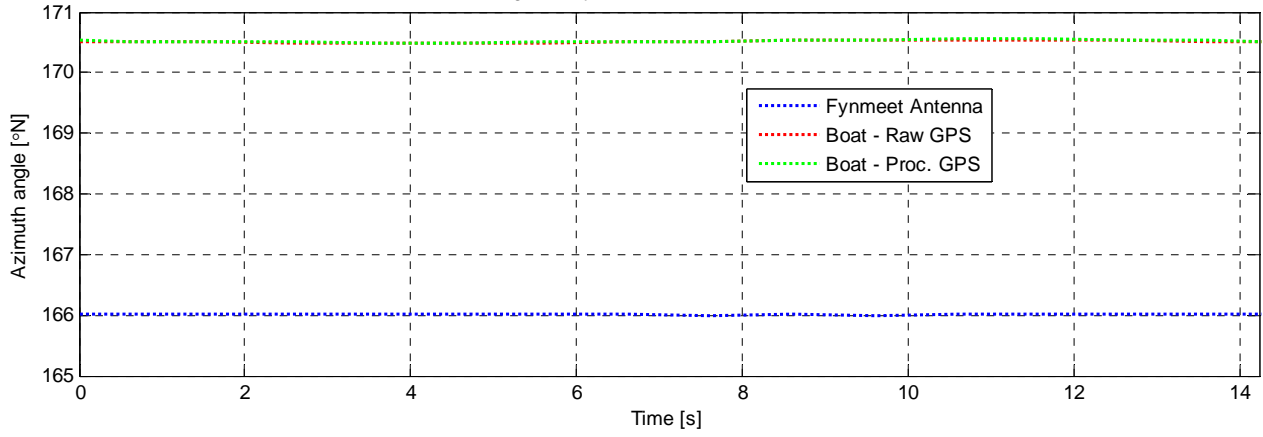


Experiment Summary	Value	Radar Setup	Value
Type	Target	Tx Frequency	9 GHz
Date	01-Aug-2006	PRF	5 kHz
Start Time	14:04:35.390	Tracking Range	3000.31 m
Duration	71160 PRI's (14.2318 s)	Range Extend	1440 m (96 gates), 15 m res.
Original File	PF060801.021	Waveform Type	Fixed Frequency
Original Path	\\20060801_ifs_g_extra_contd_2	Waveform Bandwidth	N/A
Processor Version	FMSCP Ver 01.22	Waveform File	SC_Fixed_256BL.txt

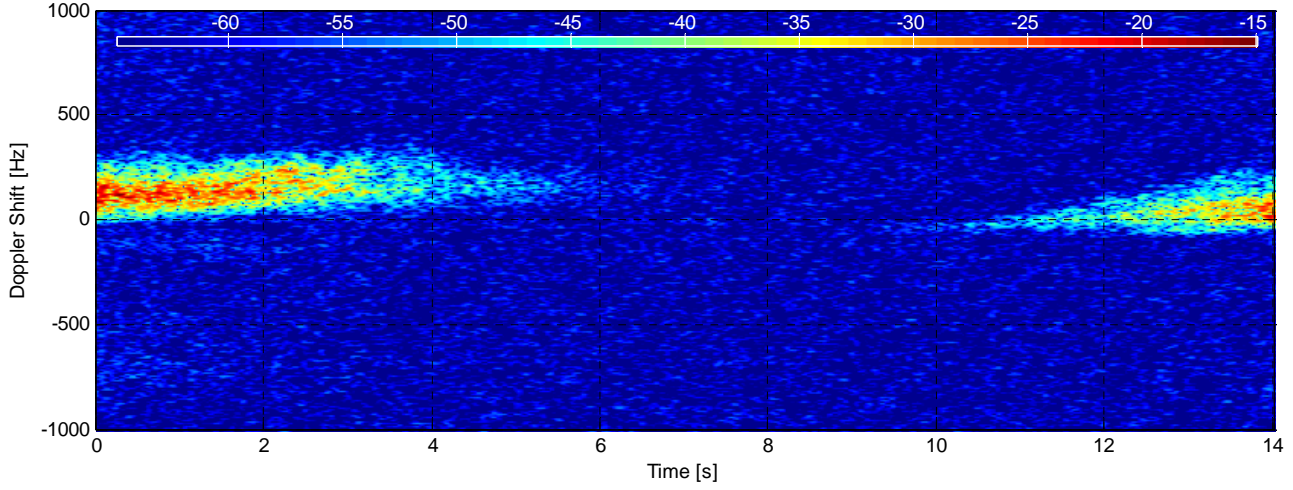
Environment	Value	Geometry	Value	Processing	Value
Inst. Wind	15.2 kts, 164.6 deg. N	Grazing Angle	0.853 - 1.27 deg.	Odd Gates Offset	0.72018+6.8161i
Wind Gust	31.1 kts, 177 deg. N	Antenna Azm.	166 deg. N	Even Gates Offset	7.21259-8.82439i
8hr Avg. Wind	15.7 kts, 166.3 deg. N	Antenna Elv.	-1.195 deg.	I/Q Imbalance	Bypassed
Wave (SWH)	3.13 m, 168.5 deg. N	Antenna BW.	1.8 deg. Az, 1.8 deg. El	Complex Conj.	Applied
		GPS Data	Available	Calibr. Coeff.	190.9 dB



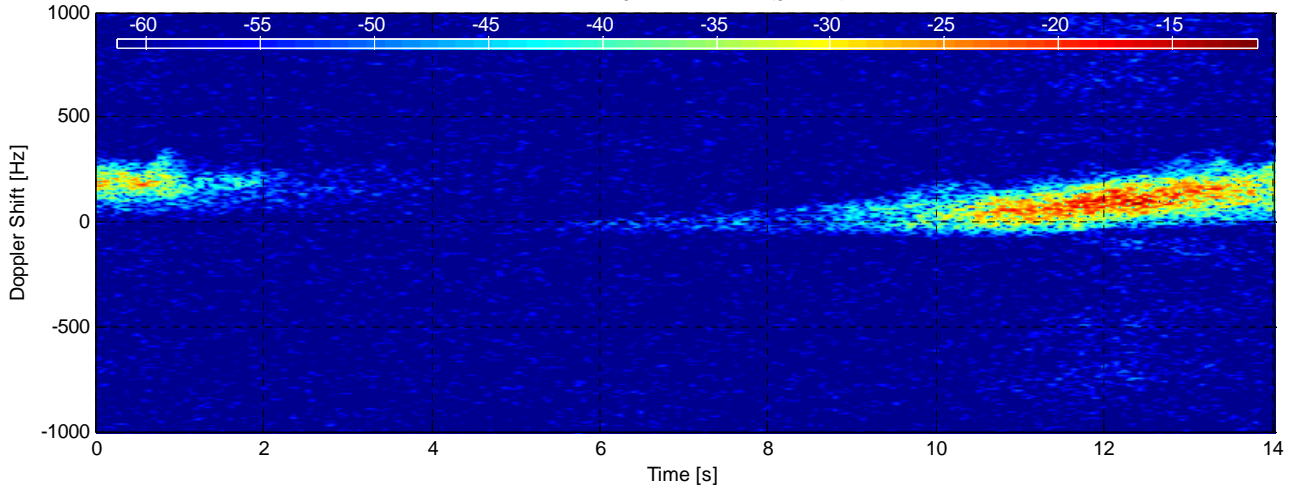
Azimuth Angle for Fynmeet Antenna and Boat - TFC15-014



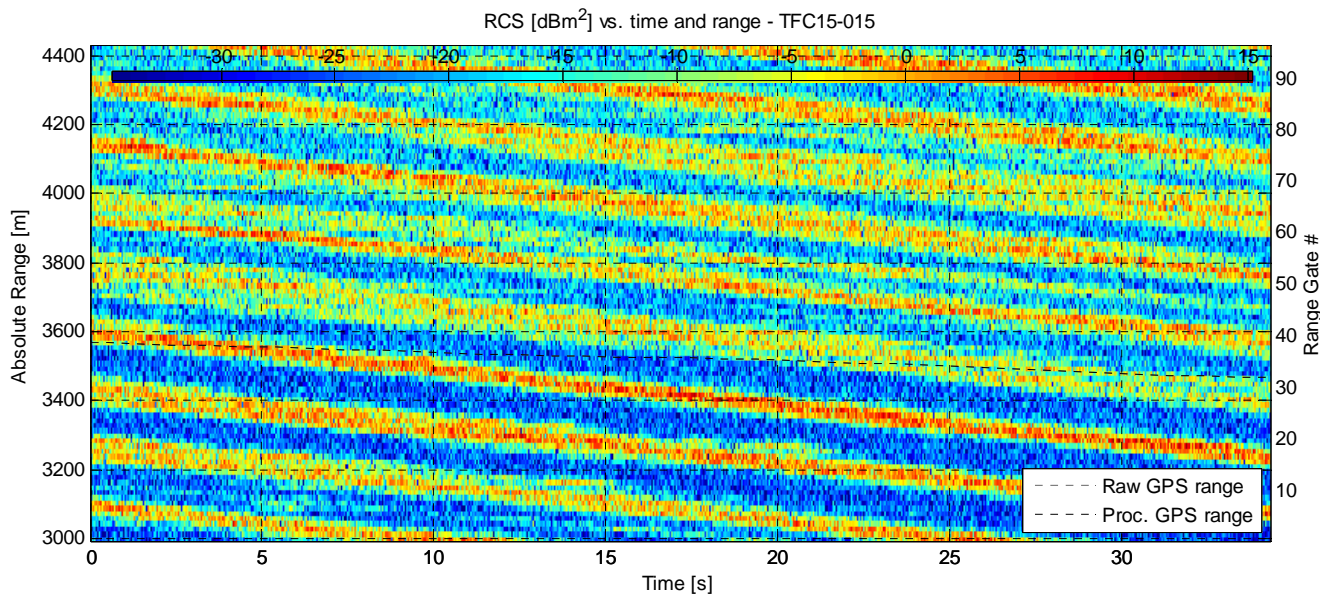
RCS [dBm².Hz⁻¹] at range 3585.3125 m (gate 40) - TFC15-014



RCS [dBm².Hz⁻¹] at range 3615.3125 m (gate 42) - TFC15-014

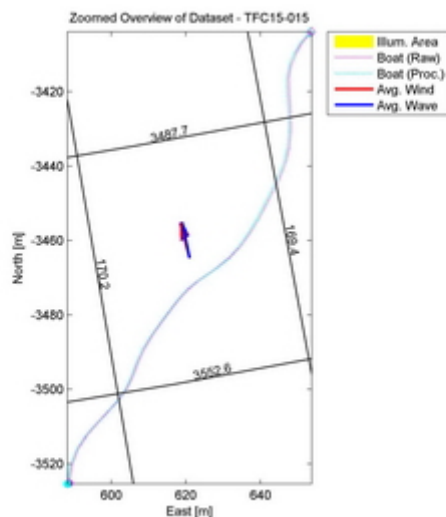
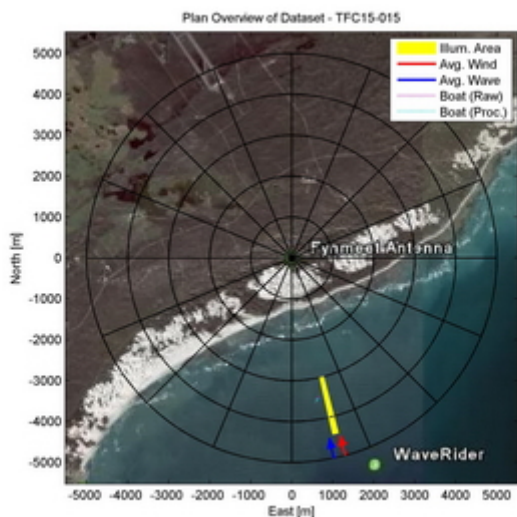


Dataset TFC15-015

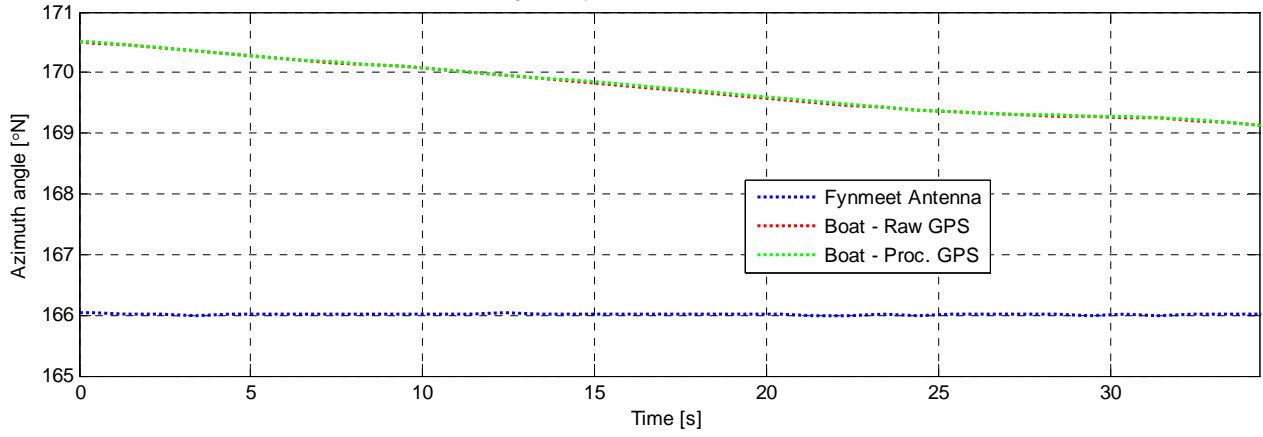


Experiment Summary	Value	Radar Setup	Value
Type	Target	Tx Frequency	9 GHz
Date	01-Aug-2006	PRF	5 kHz
Start Time	14:04:49.630	Tracking Range	3000.31 m
Duration	171480 PRI's (34.2958 s)	Range Extend	1440 m (96 gates), 15 m res.
Original File	PF060801.021	Waveform Type	Fixed Frequency
Original Path	\\20060801_ifs_g_extra_contd_2	Waveform Bandwidth	N/A
Processor Version	FMSCP Ver 01.22	Waveform File	SC_Fixed_256BL.txt

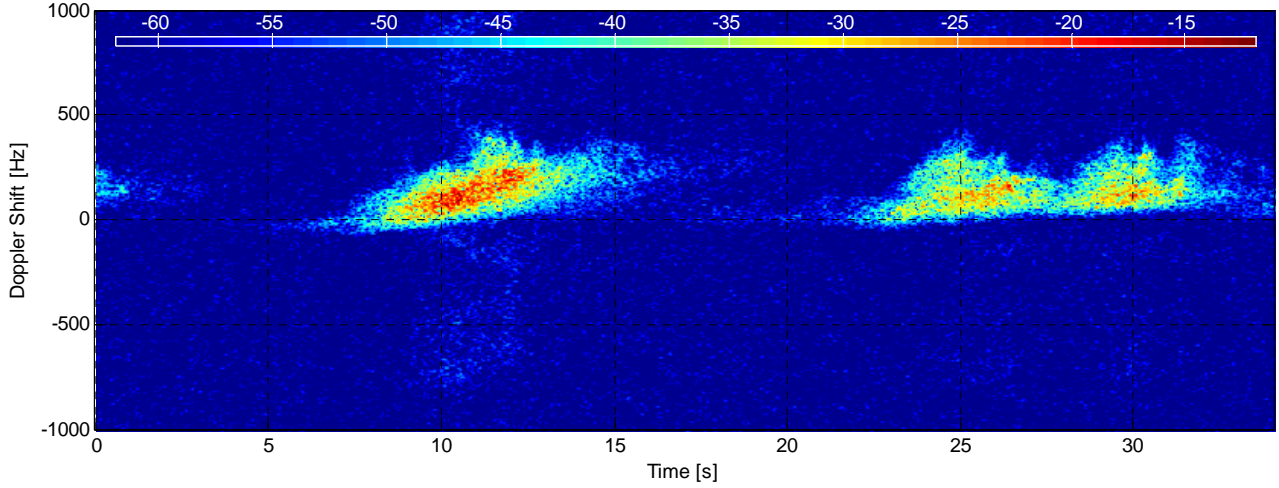
Environment	Value	Geometry	Value	Processing	Value
Inst. Wind	15.2 kts, 164.6 deg. N	Grazing Angle	0.853 - 1.27 deg.	Odd Gates Offset	0.80519+6.8802i
Wind Gust	31.1 kts, 177 deg. N	Antenna Azm.	166 deg. N	Even Gates Offset	7.0807-8.97944i
8hr Avg. Wind	15.7 kts, 166.3 deg. N	Antenna Elv.	-1.195 deg.	I/Q Imbalance	Bypassed
Wave (SWH)	3.13 m, 168.5 deg. N	Antenna BW.	1.8 deg. Az, 1.8 deg. El	Complex Conj.	Applied
		GPS Data	Available	Calibr. Coeff.	190.9 dB



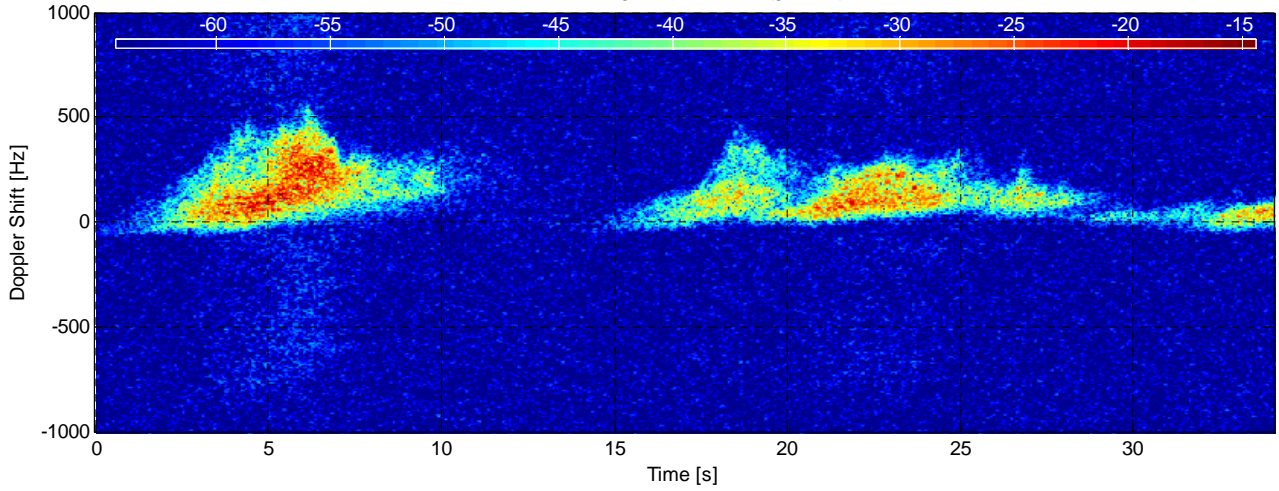
Azimuth Angle for Fynmeet Antenna and Boat - TFC15-015



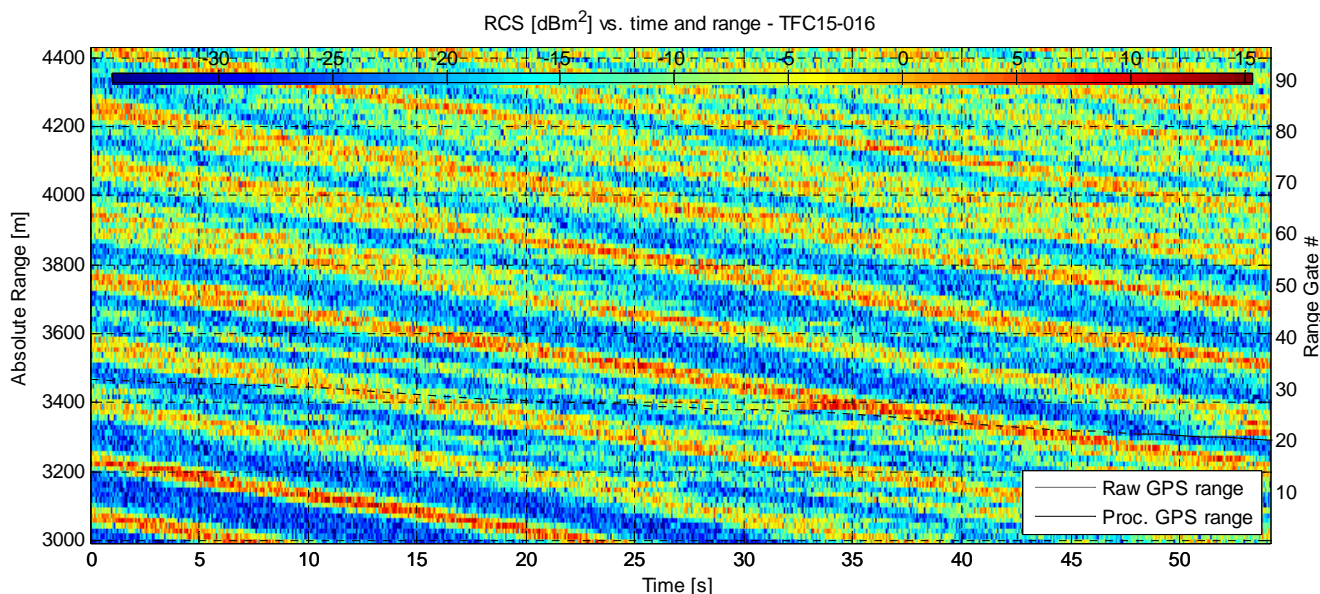
RCS [dBm².Hz⁻¹] at range 3480.3125 m (gate 33) - TFC15-015



RCS [dBm².Hz⁻¹] at range 3540.3125 m (gate 37) - TFC15-015

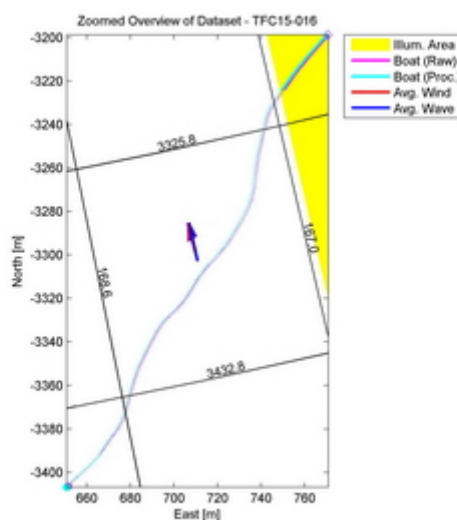
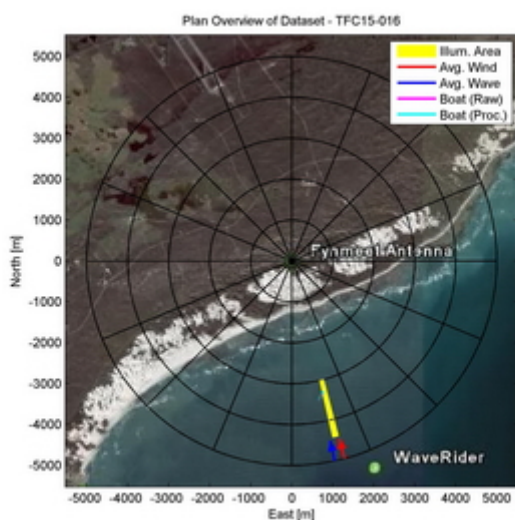


Dataset TFC15-016

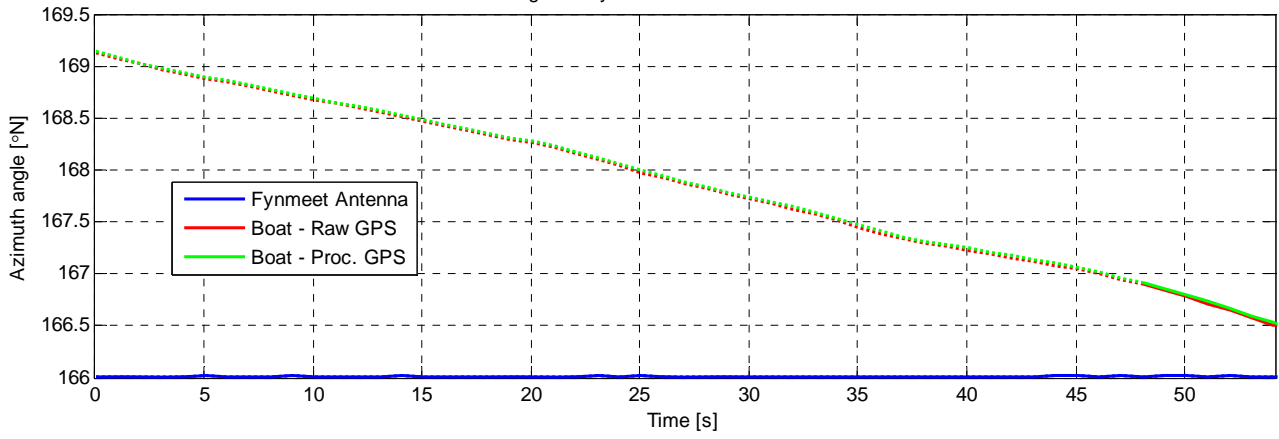


Experiment Summary	Value	Radar Setup	Value
Type	Target	Tx Frequency	9 GHz
Date	01-Aug-2006	PRF	5 kHz
Start Time	14:05:23.934	Tracking Range	3000.31 m
Duration	270720 PRI's (54.1438 s)	Range Extend	1440 m (96 gates), 15 m res.
Original File	PF060801.021	Waveform Type	Fixed Frequency
Original Path	\\20060801_ifs_g_extra_contd_2	Waveform Bandwidth	N/A
Processor Version	FMSCP Ver 01.22	Waveform File	SC_Fixed_256BL.txt

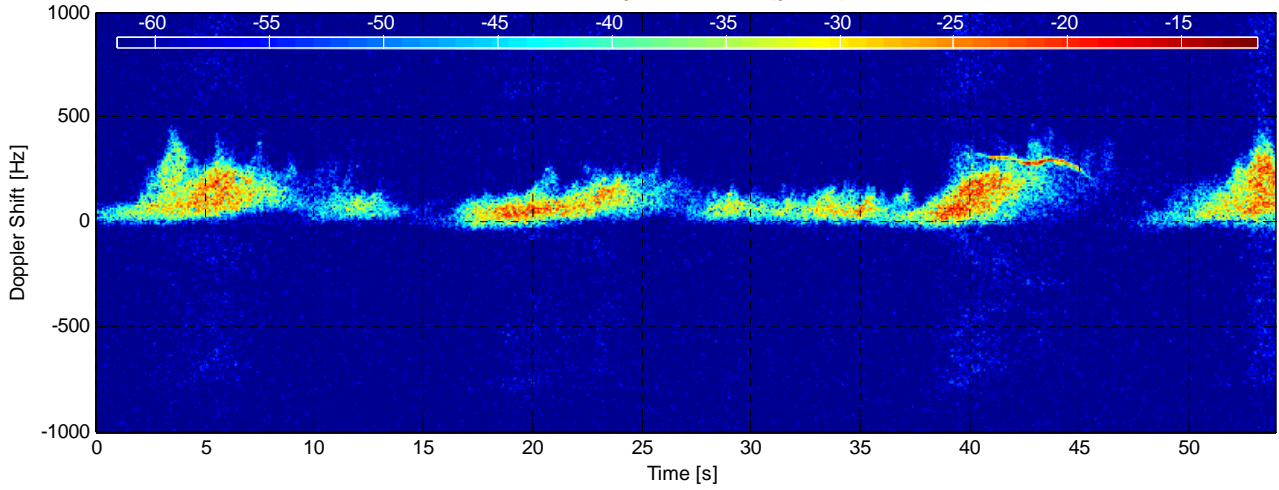
Environment	Value	Geometry	Value	Processing	Value
Inst. Wind	15.1 kts, 164.8 deg. N	Grazing Angle	0.853 - 1.27 deg.	Odd Gates Offset	0.8796+6.729i
Wind Gust	31.1 kts, 177 deg. N	Antenna Azm.	166 deg. N	Even Gates Offset	7.08283-8.80683i
8hr Avg. Wind	15.7 kts, 166.3 deg. N	Antenna Elv.	-1.195 deg.	I/Q Imbalance	Bypassed
Wave (SWH)	3.12 m, 168.3 deg. N	Antenna BW.	1.8 deg. Az, 1.8 deg. El	Complex Conj.	Applied
		GPS Data	Available	Calibr. Coeff.	190.9 dB



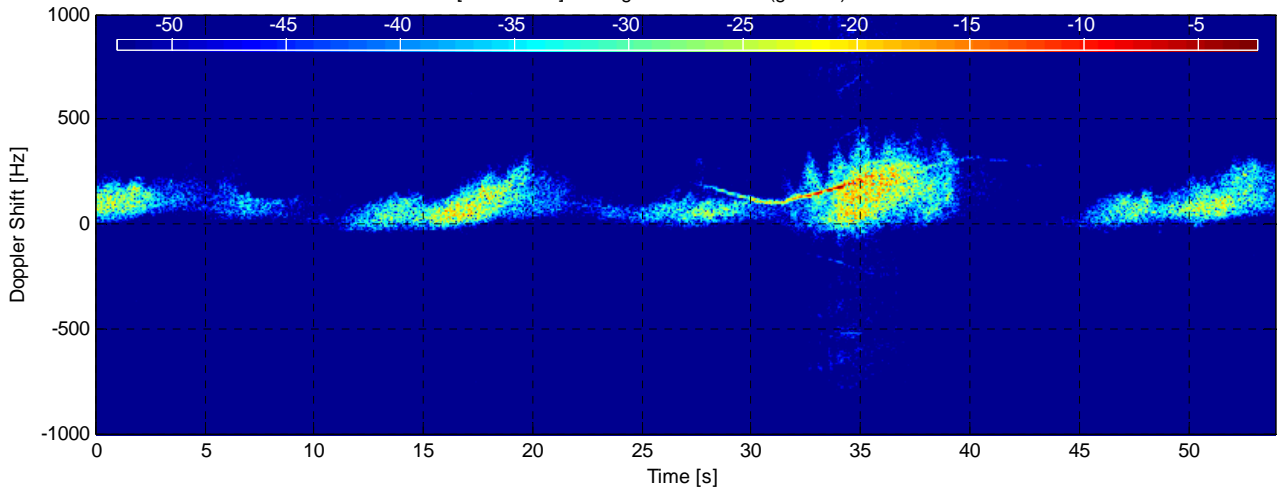
Azimuth Angle for Fynmeet Antenna and Boat - TFC15-016



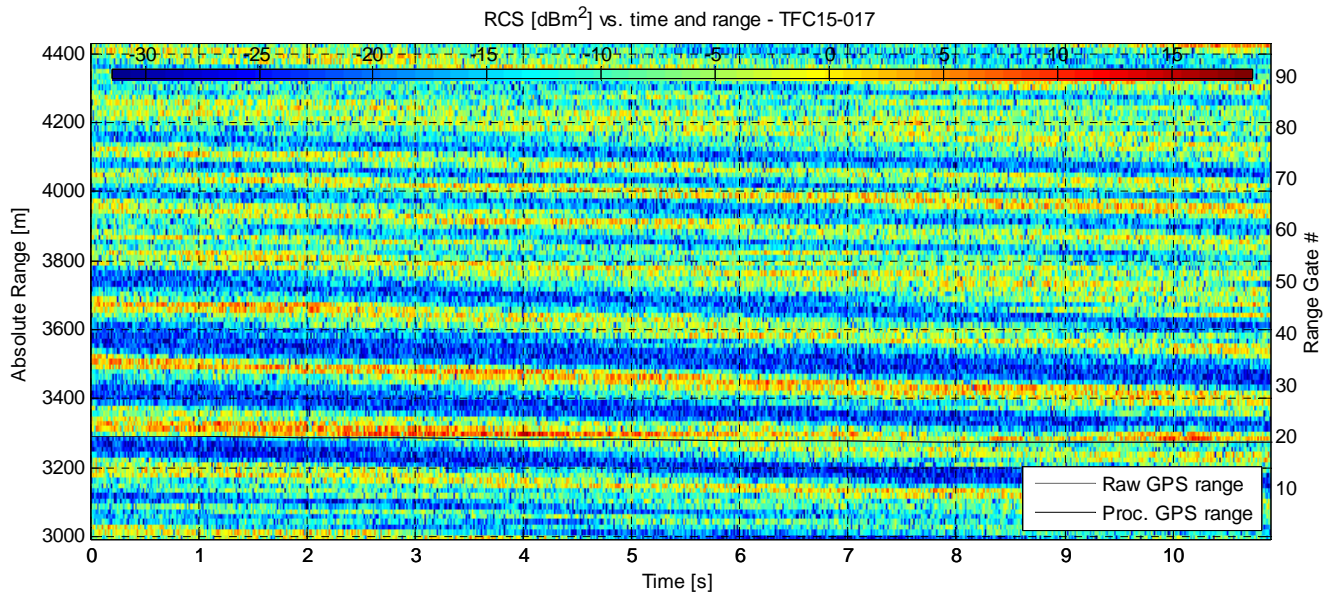
RCS [dBm².Hz⁻¹] at range 3345.3125 m (gate 24) - TFC15-016



RCS [dBm².Hz⁻¹] at range 3390.3125 m (gate 27) - TFC15-016

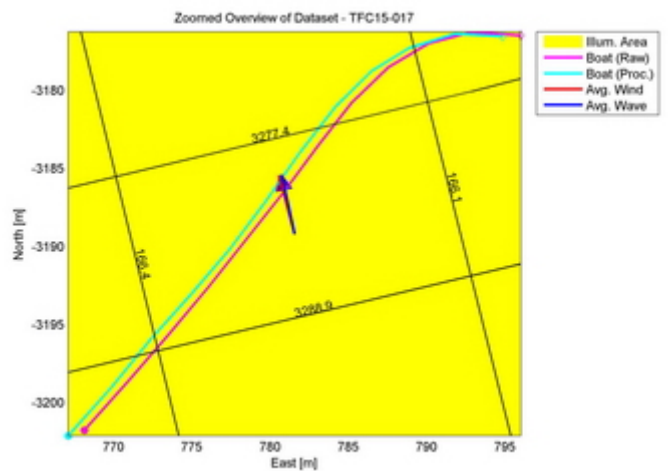
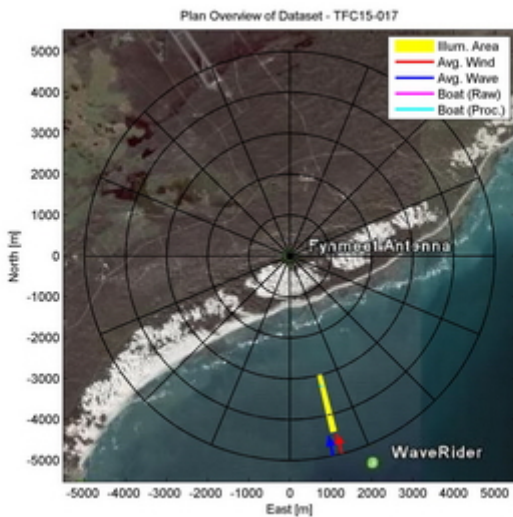


Dataset TFC15-017

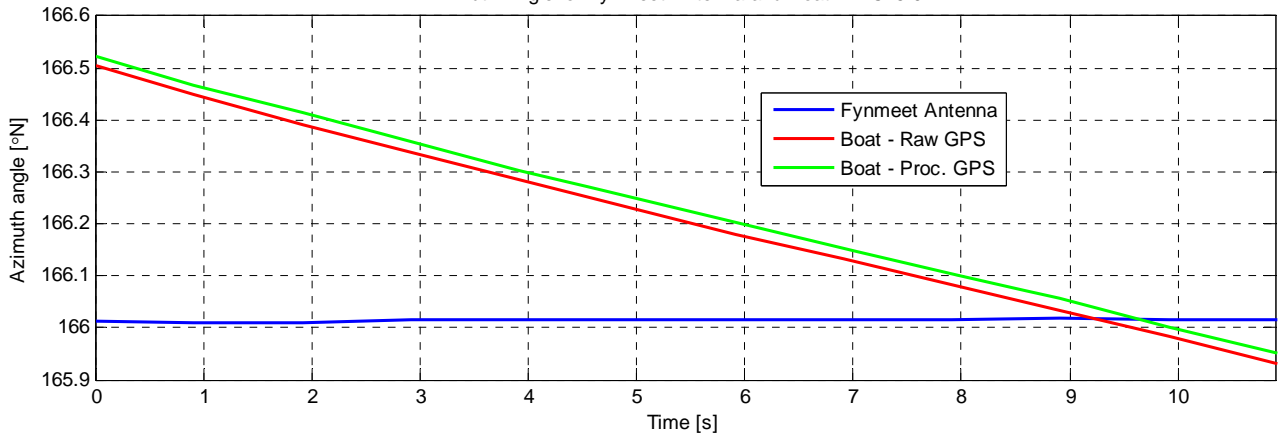


Experiment Summary		Radar Setup	
Type	Value	Tx Frequency	Value
Type	Target	Tx Frequency	9 GHz
Date	01-Aug-2006	PRF	5 kHz
Start Time	14:06:18.086	Tracking Range	3000.31 m
Duration	54490 PRI's (10.8978 s)	Range Extend	1440 m (96 gates), 15 m res.
Original File	PF060801.021	Waveform Type	Fixed Frequency
Original Path	\20060801_ifs_g_extra_contd_2	Waveform Bandwidth	N/A
Processor Version	FMSCP Ver 01.22	Waveform File	SC_Fixed_256BL.txt

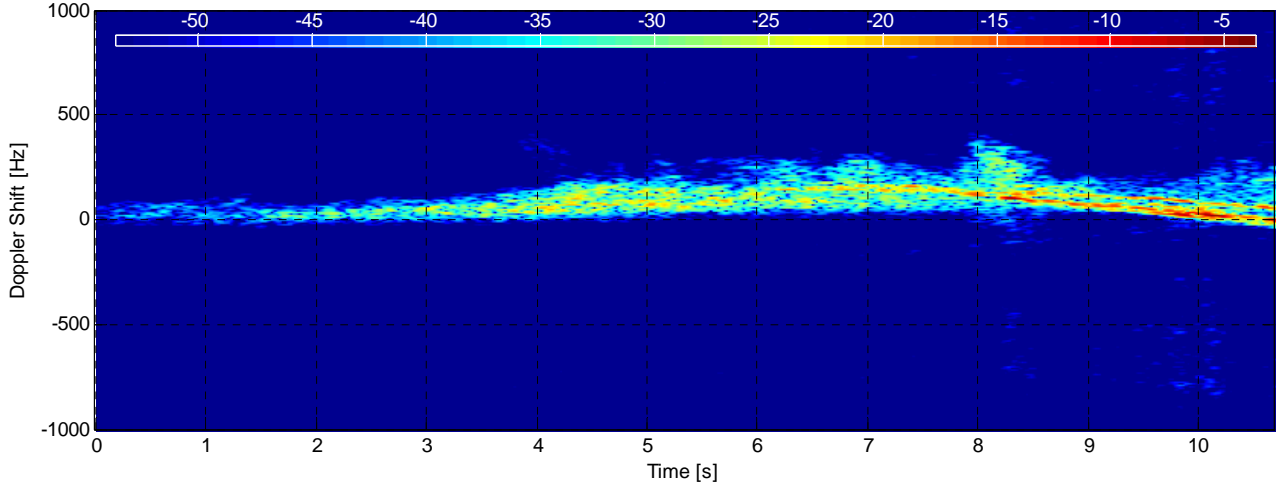
Environment	Value	Geometry	Value	Processing	Value
Inst. Wind	15.1 kts, 165 deg. N	Grazing Angle	0.853 - 1.27 deg.	Odd Gates Offset	0.93467+6.5647i
Wind Gust	31.1 kts, 177 deg. N	Antenna Azm.	166 deg. N	Even Gates Offset	6.743-8.55446i
8hr Avg. Wind	15.7 kts, 166.3 deg. N	Antenna Elv.	-1.195 deg.	I/Q Imbalance	Bypassed
Wave (SWH)	3.12 m, 168 deg. N	Antenna BW.	1.8 deg. Az, 1.8 deg. El	Complex Conj.	Applied
		GPS Data	Available	Calibr. Coeff.	190.9 dB



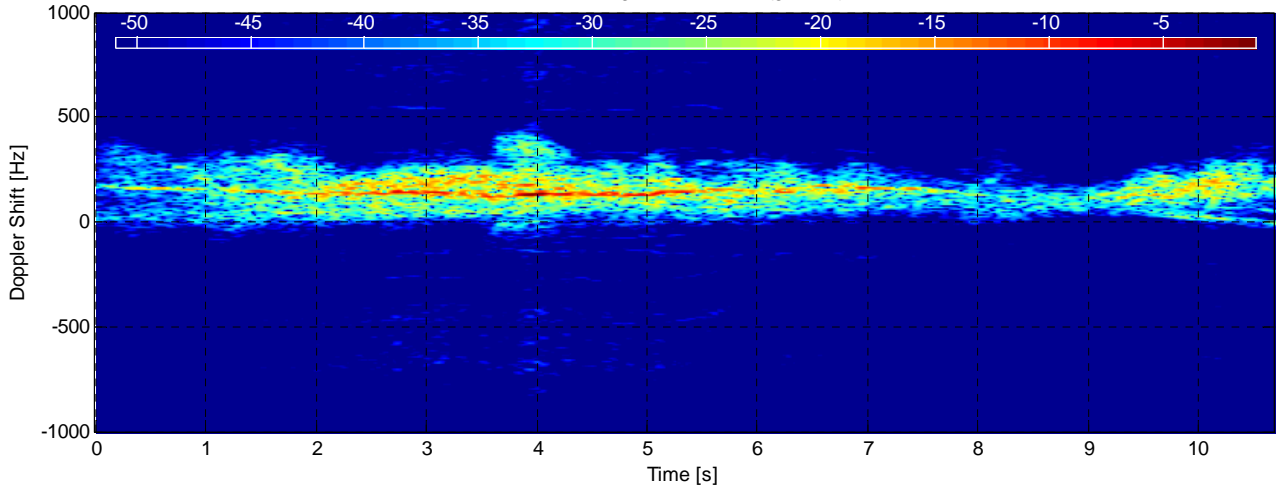
Azimuth Angle for Fynmeet Antenna and Boat - TFC15-017



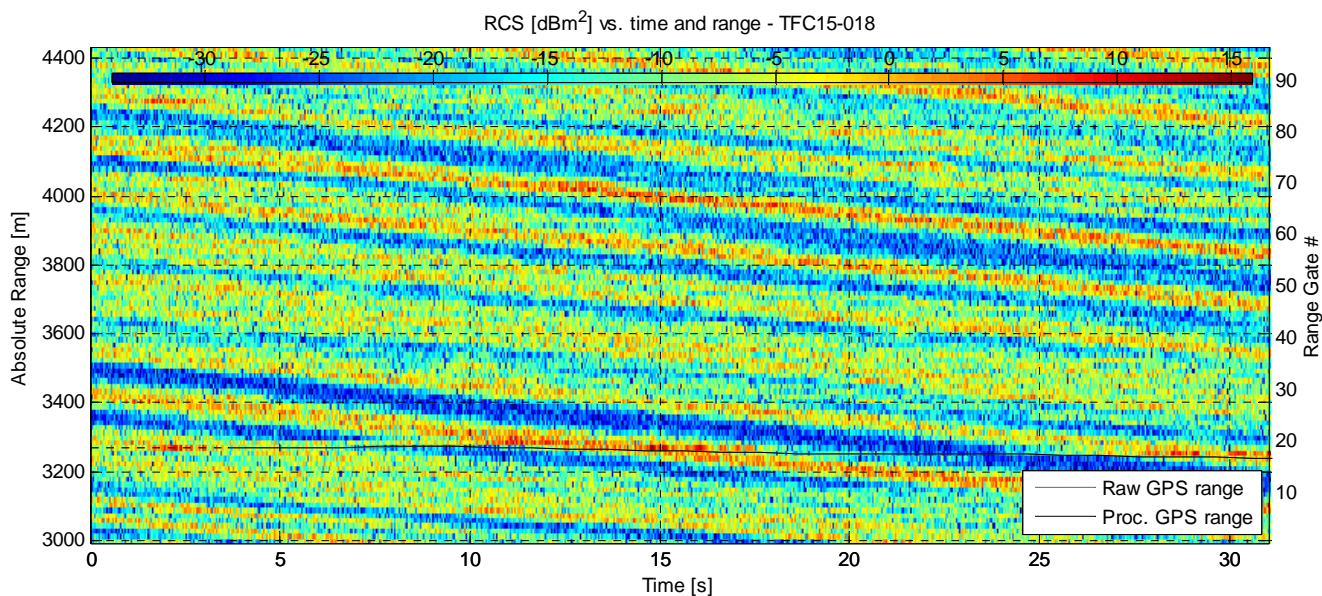
RCS [dBm².Hz⁻¹] at range 3285.3125 m (gate 20) - TFC15-017



RCS [dBm².Hz⁻¹] at range 3300.3125 m (gate 21) - TFC15-017

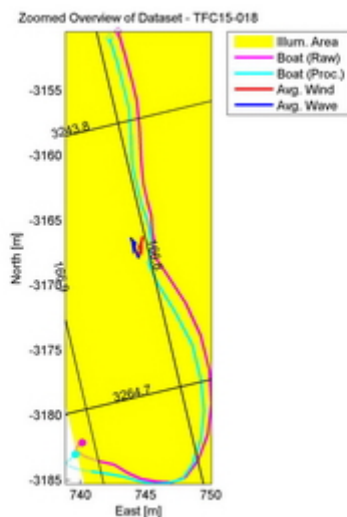
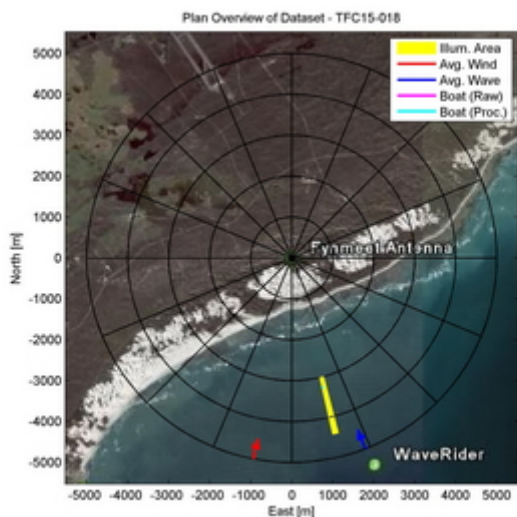


Dataset TFC15-018

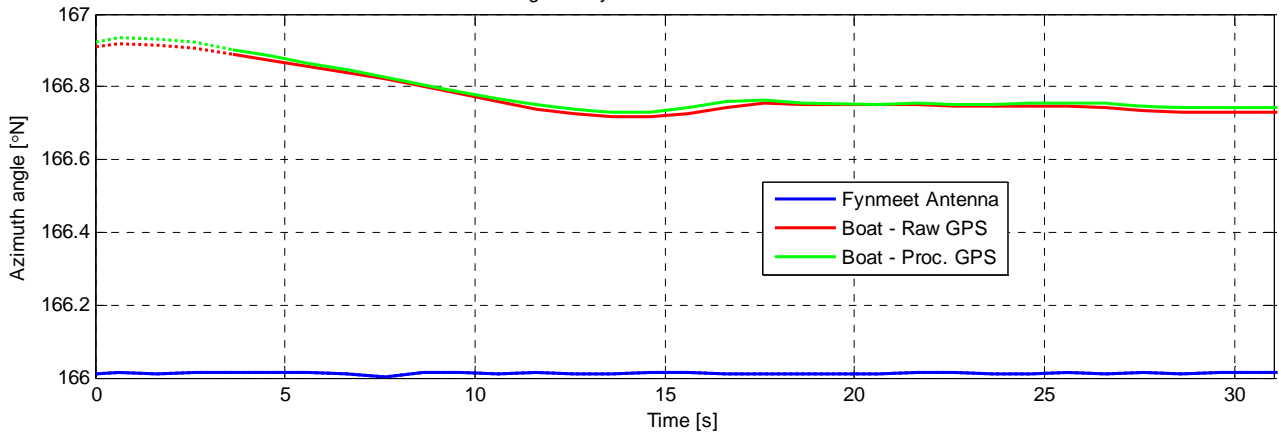


Experiment Summary	Value	Radar Setup	Value
Type	Target	Tx Frequency	9 GHz
Date	01-Aug-2006	PRF	5 kHz
Start Time	15:22:15.375	Tracking Range	3000.63 m
Duration	155400 PRI's (31.0798 s)	Range Extend	1440 m (96 gates), 15 m res.
Original File	PF060801.035	Waveform Type	Fixed Frequency
Original Path	\\20060801_ifs_g_extra_contd_3	Waveform Bandwidth	N/A
Processor Version	FMSCP Ver 01.22	Waveform File	SC_Fixed_256BL.txt

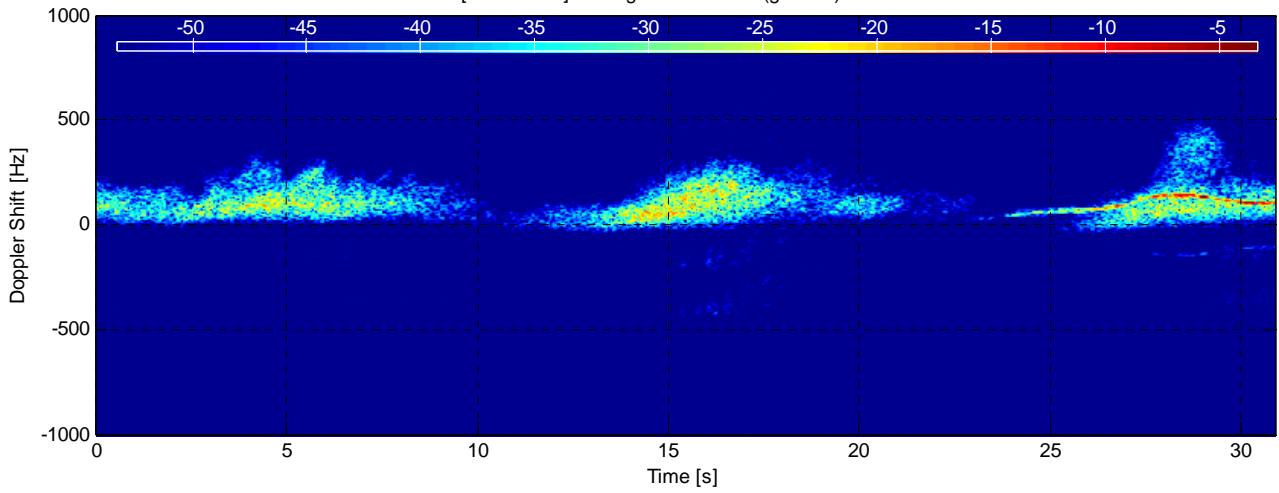
Environment	Value	Geometry	Value	Processing	Value
Inst. Wind	16.6 kts, 190.7 deg. N	Grazing Angle	0.853 - 1.27 deg.	Odd Gates Offset	0.72268-4.0437i
Wind Gust	26 kts, 180 deg. N	Antenna Azm.	166 deg. N	Even Gates Offset	-1.2801+2.2142i
8hr Avg. Wind	14.9 kts, 167.6 deg. N	Antenna Elv.	-1.189 deg.	I/Q Imbalance	Bypassed
Wave (SWH)	3.11 m, 159 deg. N	Antenna BW.	1.8 deg. Az, 1.8 deg. El	Complex Conj.	Applied
		GPS Data	Available	Calibr. Coeff.	190.9 dB



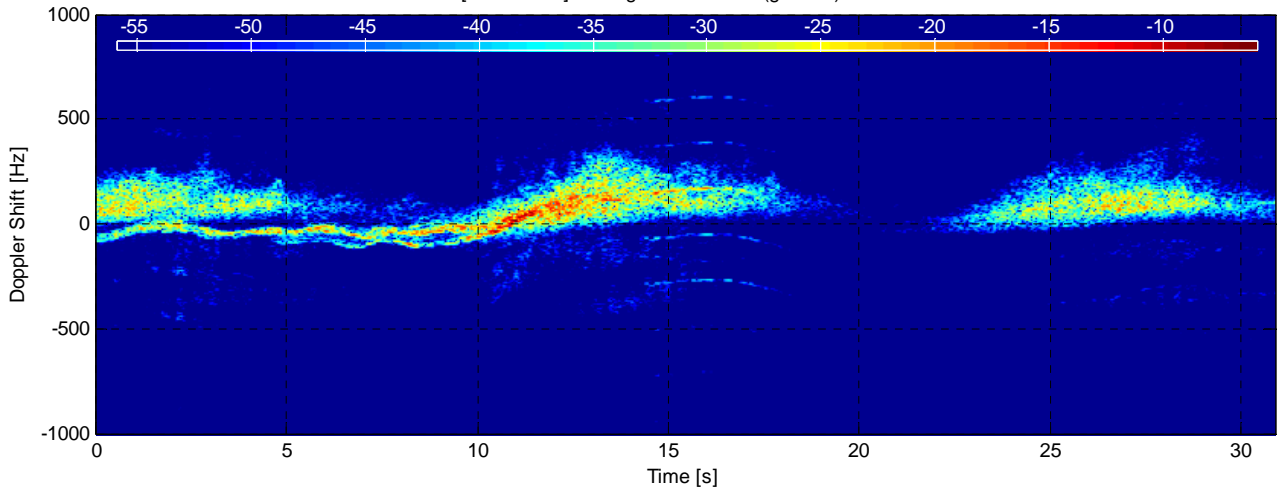
Azimuth Angle for Fynmeet Antenna and Boat - TFC15-018



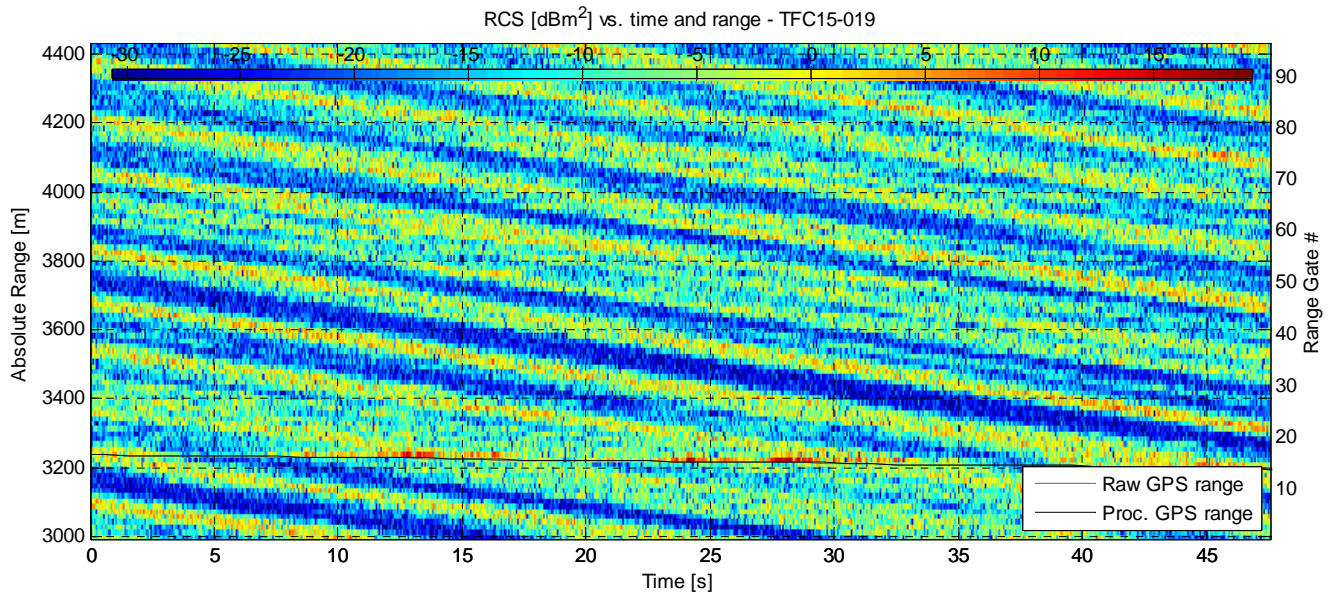
RCS [dBm².Hz⁻¹] at range 3255.625 m (gate 18) - TFC15-018



RCS [dBm².Hz⁻¹] at range 3285.625 m (gate 20) - TFC15-018

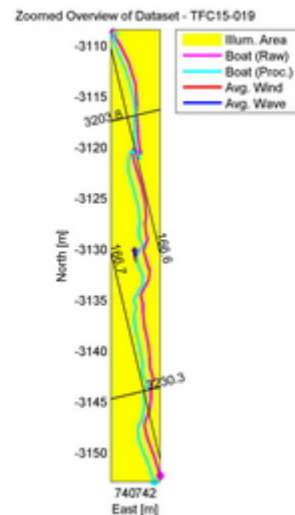
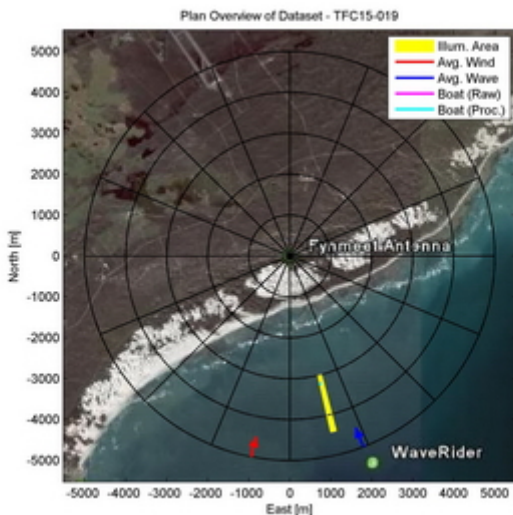


Dataset TFC15-019

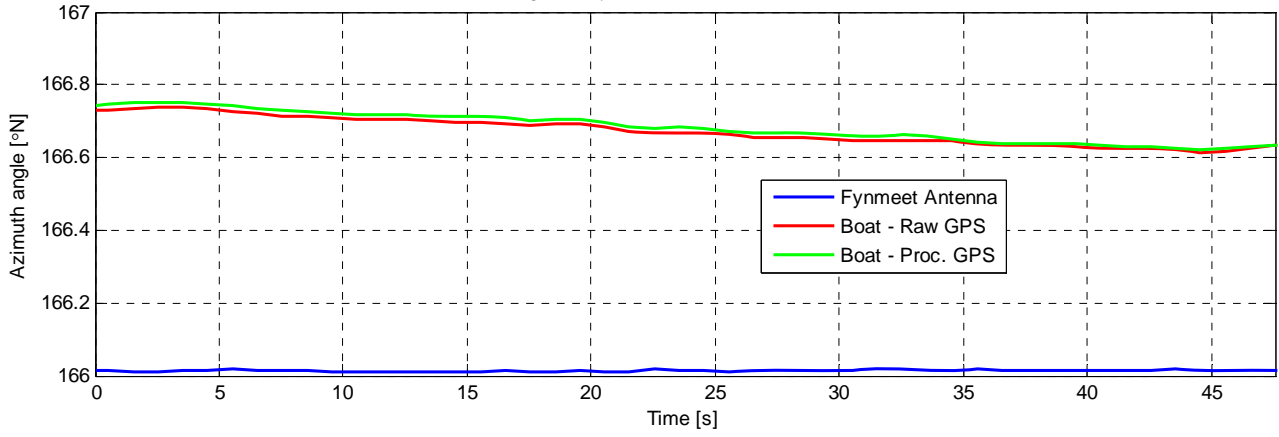


Experiment Summary	Value	Radar Setup	Value
Type	Target	Tx Frequency	9 GHz
Date	01-Aug-2006	PRF	5 kHz
Start Time	15:22:46.463	Tracking Range	3000.63 m
Duration	237770 PRI's (47.5538 s)	Range Extend	1440 m (96 gates), 15 m res.
Original File	PF060801.035	Waveform Type	Fixed Frequency
Original Path	\20060801_ifs_g_extra_contd_3	Waveform Bandwidth	N/A
Processor Version	FMSCP Ver 01.22	Waveform File	SC_Fixed_256BL.txt

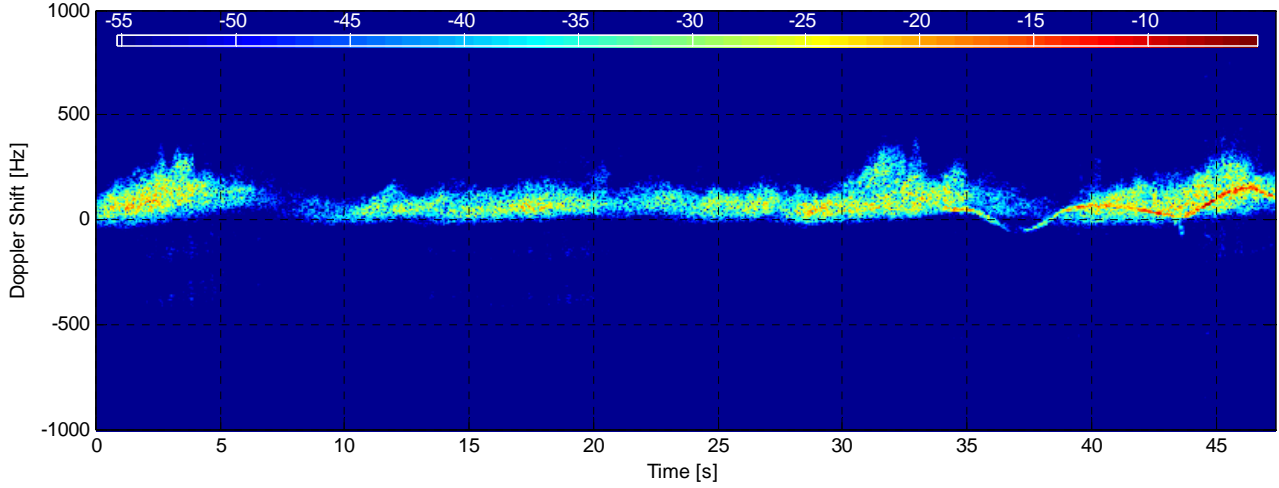
Environment	Value	Geometry	Value	Processing	Value
Inst. Wind	16.6 kts, 190.7 deg. N	Grazing Angle	0.853 - 1.27 deg.	Odd Gates Offset	0.8058-4.0659i
Wind Gust	26 kts, 180 deg. N	Antenna Azm.	166 deg. N	Even Gates Offset	-1.3723+2.3513i
8hr Avg. Wind	14.9 kts, 167.6 deg. N	Antenna Elv.	-1.189 deg.	I/Q Imbalance	Bypassed
Wave (SWH)	3.11 m, 159 deg. N	Antenna BW.	1.8 deg. Az, 1.8 deg. El	Complex Conj.	Applied
		GPS Data	Available	Calibr. Coeff.	190.9 dB



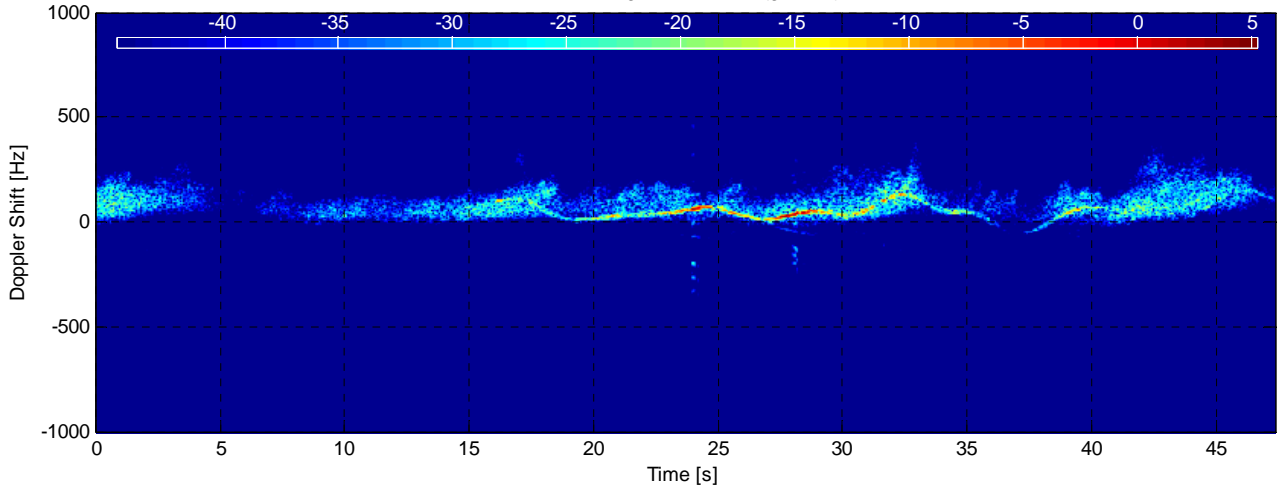
Azimuth Angle for Fynmeet Antenna and Boat - TFC15-019



RCS [dBm².Hz⁻¹] at range 3210.625 m (gate 15) - TFC15-019



RCS [dBm².Hz⁻¹] at range 3225.625 m (gate 16) - TFC15-019



RCS [dBm².Hz⁻¹] at range 3240.625 m (gate 17) - TFC15-019

