

2006 Fynmeet Sea Clutter Measurement Trial

Dataset Overview for 31-Jul-2006

Dr PL Herselman

2006 Fynmeet Sea Clutter Measurement Trial : Dataset Overview for 31-Jul-2006

by Dr PL Herselman

Published 06-Sep-2007 15:12:31

Copyright © 2006 Council for Scientific and Industrial Research, South Africa

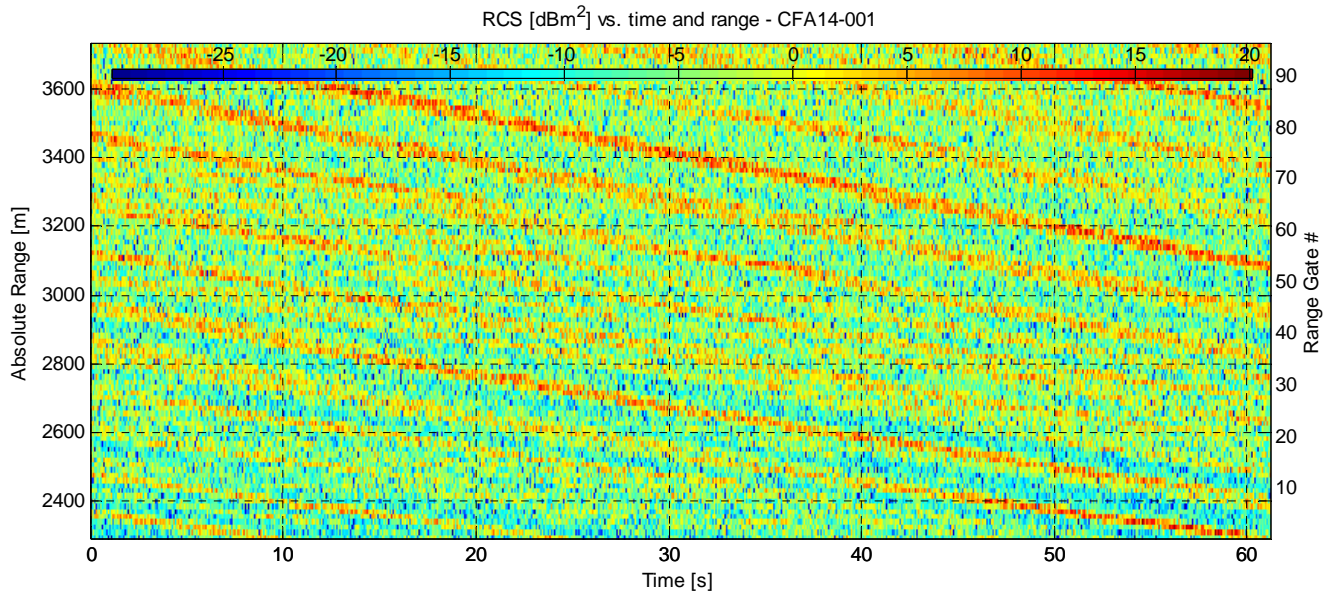
This document provides an overview for the datasets (or subset thereof) recorded on 31-Jul-2006 as part of the Fynmeet Sea Clutter Measurement Trial conducted at the Overberg Test Range at Arniston, South Africa. The trial was conducted over the period from 18 July to 4 August 2006. These datasets have been stored in structured Mathworks Matlab (*.mat) files and will be made available to research institutes or universities upon request. For more information contact Dr PL Herselman at pherselman@csir.co.za.

Copyright CSIR. The copyright of this document is the property of the CSIR. The document is issued for the sole purpose for which it is supplied, on the express conditions that it may not be copied in whole or in part, used by or disclosed to others, except as authorised in writing by the CSIR.

Table of Contents

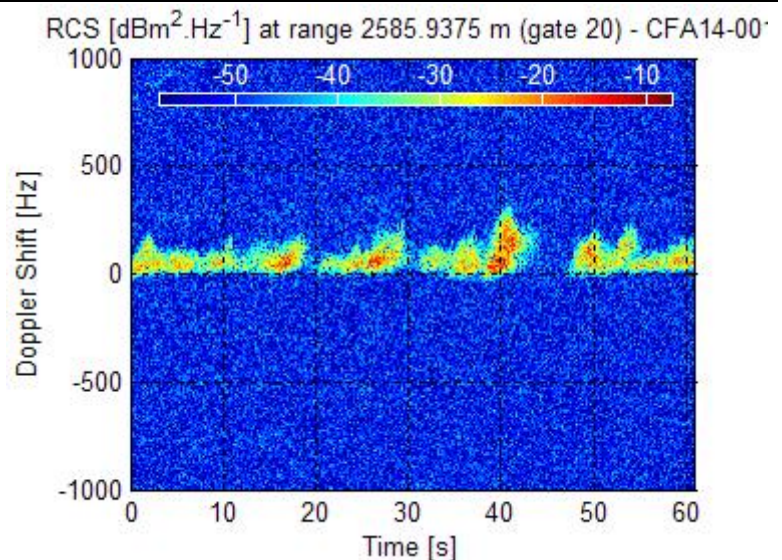
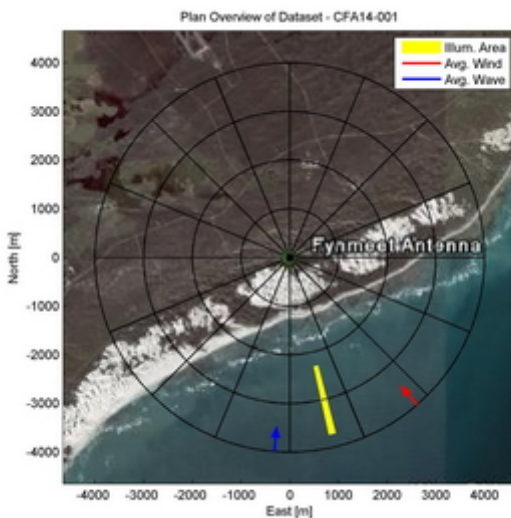
| | |
|------------------------|----|
| Dataset CFA14-001..... | 1 |
| Dataset CFB14-001..... | 3 |
| Dataset CFC14-001..... | 5 |
| Dataset CFC14-002..... | 7 |
| Dataset CFC14-003..... | 9 |
| Dataset CFC14-004..... | 11 |
| Dataset CFC14-005..... | 13 |
| Dataset CFC14-006..... | 15 |
| Dataset CFC14-007..... | 17 |
| Dataset CFC14-008..... | 19 |
| Dataset CFC14-009..... | 21 |
| Dataset CFE14-001..... | 23 |

Dataset CFA14-001

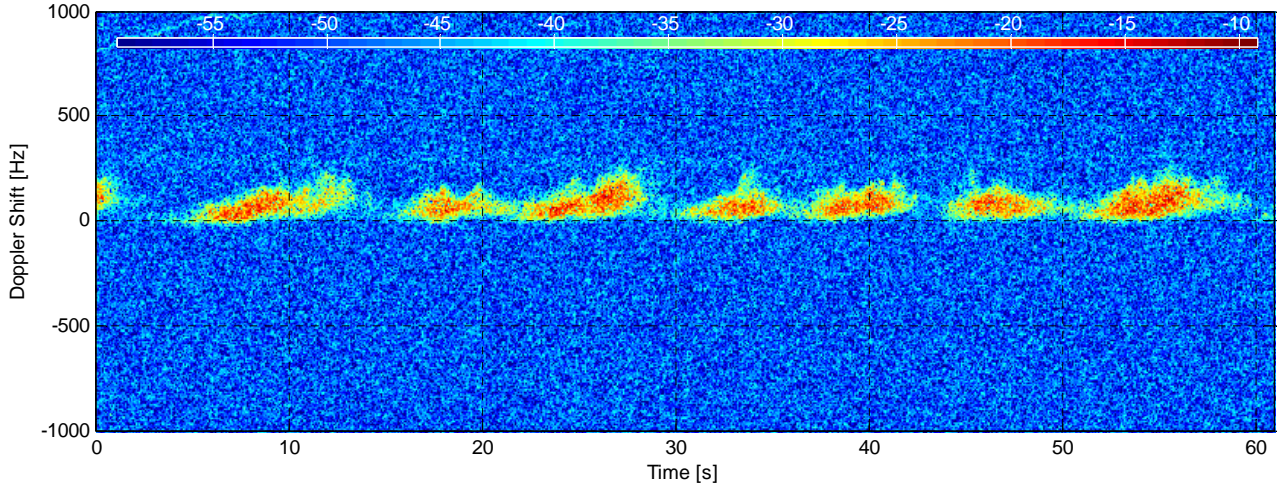


| Experiment Summary | Value | Radar Setup | Value |
|--------------------|--------------------------|--------------------|------------------------------|
| Type | Sea Clutter | Tx Frequency | 6.9 GHz |
| Date | 31-Jul-2006 | PRF | 5 kHz |
| Start Time | 17:08:36.375 | Tracking Range | 2300.94 m |
| Duration | 305830 PRI's (61.1658 s) | Range Extend | 1440 m (96 gates), 15 m res. |
| Original File | PF060731.014 | Waveform Type | Fixed Frequency |
| Original Path | \20060731_ifs | Waveform Bandwidth | N/A |
| Processor Version | FMSCP Ver 01.22 | Waveform File | SC_Fixed_256BL.txt |

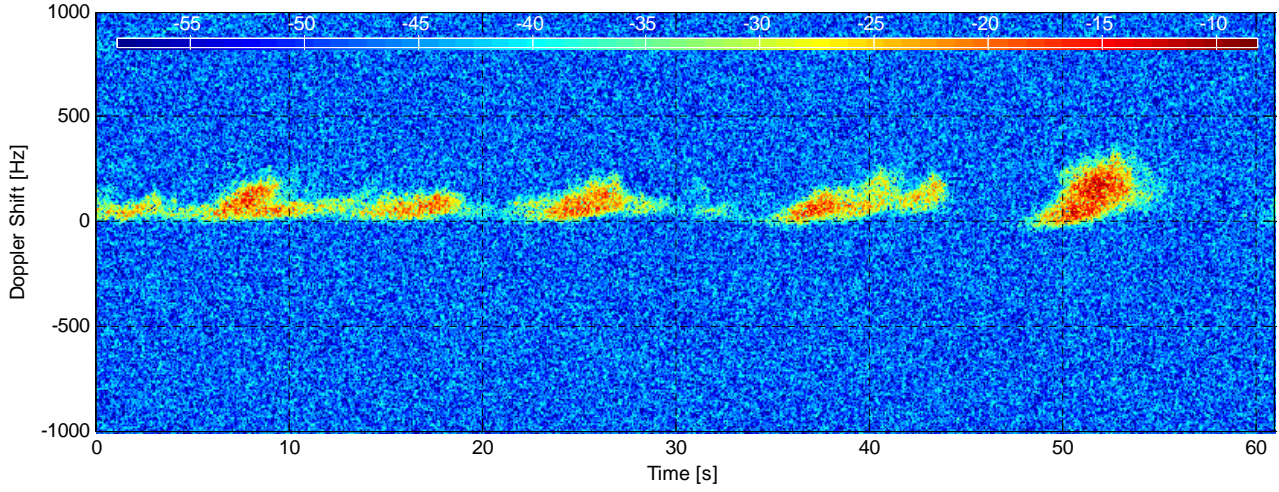
| Environment | Value | Geometry | Value | Processing | Value |
|---------------|------------------------|---------------|----------------------|-------------------|------------------|
| Inst. Wind | 13.1 kts, 139.5 deg. N | Grazing Angle | 1.02 - 1.66 deg. | Odd Gates Offset | 2.3664+3.7373i |
| Wind Gust | 18.7 kts, 143 deg. N | Antenna Azm. | 166.5 deg. N | Even Gates Offset | -3.0536-0.28047i |
| 8hr Avg. Wind | 19.5 kts, 159.9 deg. N | Antenna Elv. | -1.261 deg. | I/Q Imbalance | Bypassed |
| Wave (SWH) | 3.12 m, 184.6 deg. N | Antenna BW. | 2 deg. Az, 2 deg. El | Complex Conj. | Applied |
| | | GPS Data | Not applicable | Calibr. Coeff. | 187.7 dB |



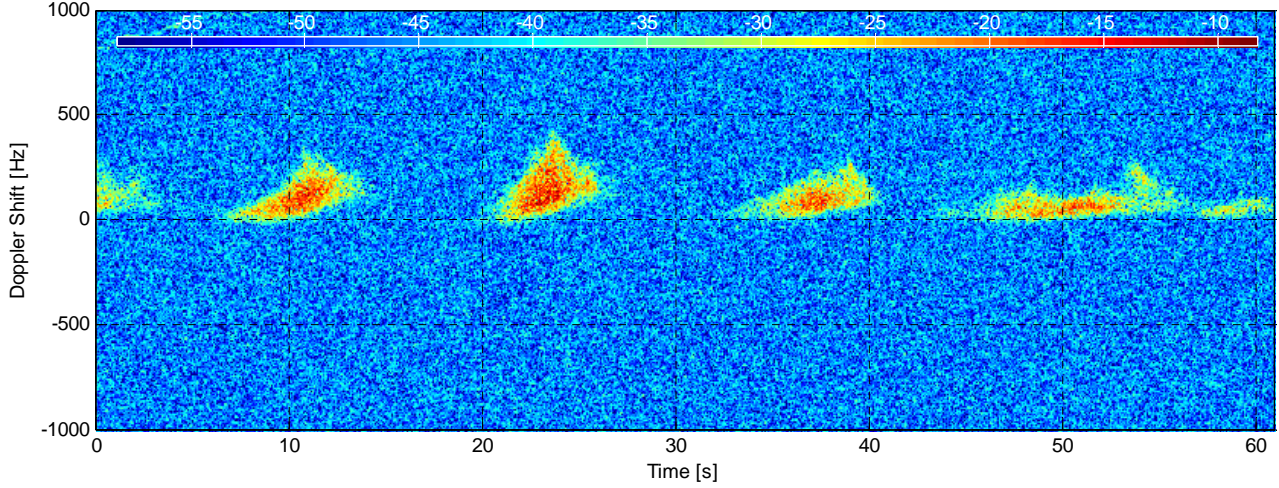
RCS [$\text{dBm}^2 \cdot \text{Hz}^{-1}$] at range 2885.9375 m (gate 40) - CFA14-001



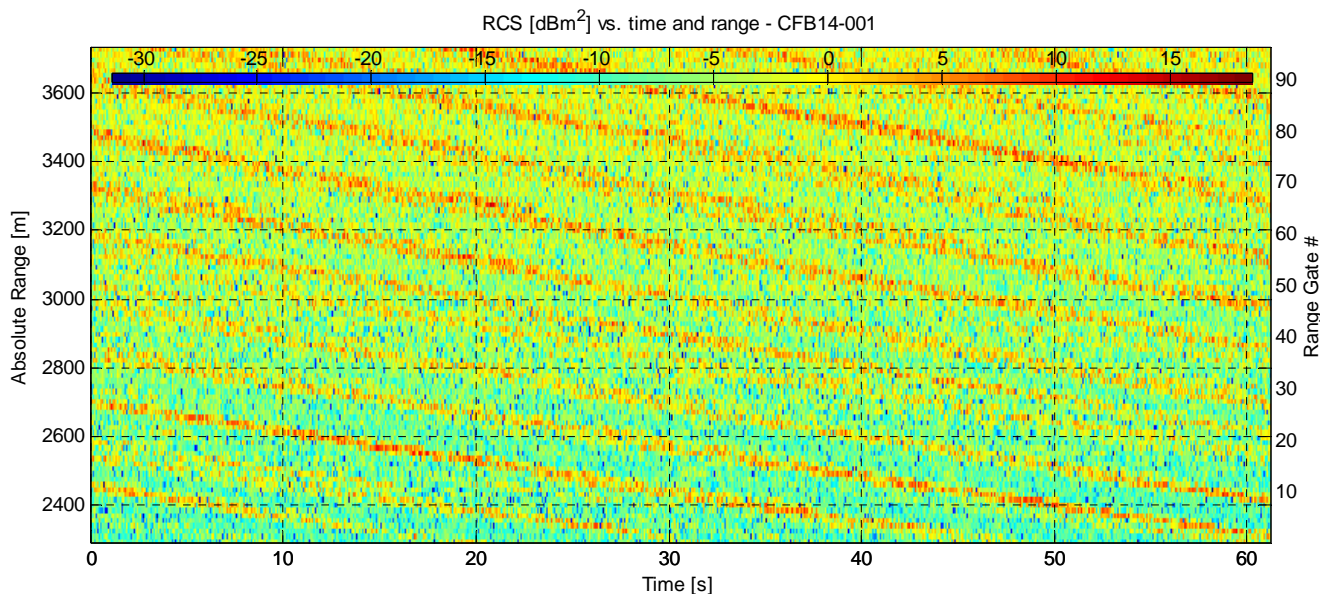
RCS [$\text{dBm}^2 \cdot \text{Hz}^{-1}$] at range 3185.9375 m (gate 60) - CFA14-001



RCS [$\text{dBm}^2 \cdot \text{Hz}^{-1}$] at range 3485.9375 m (gate 80) - CFA14-001

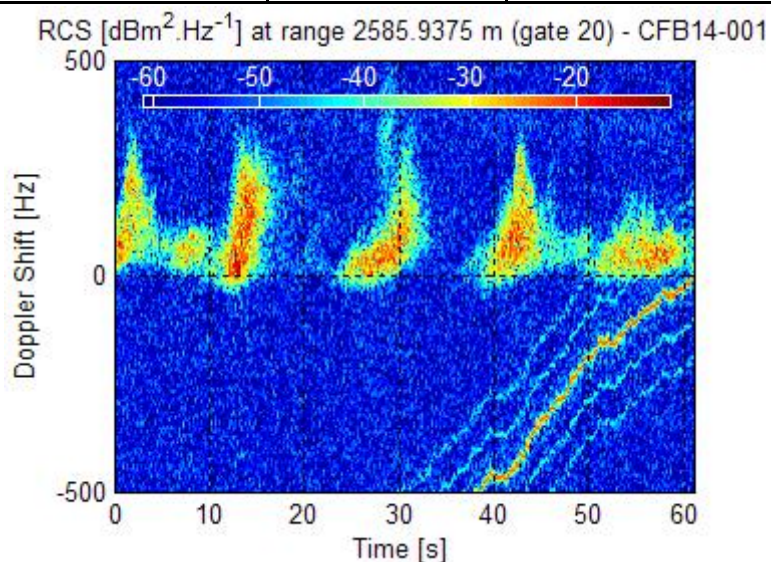
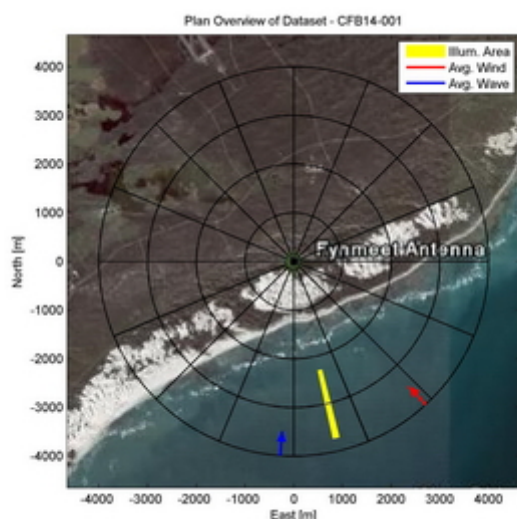


Dataset CFB14-001

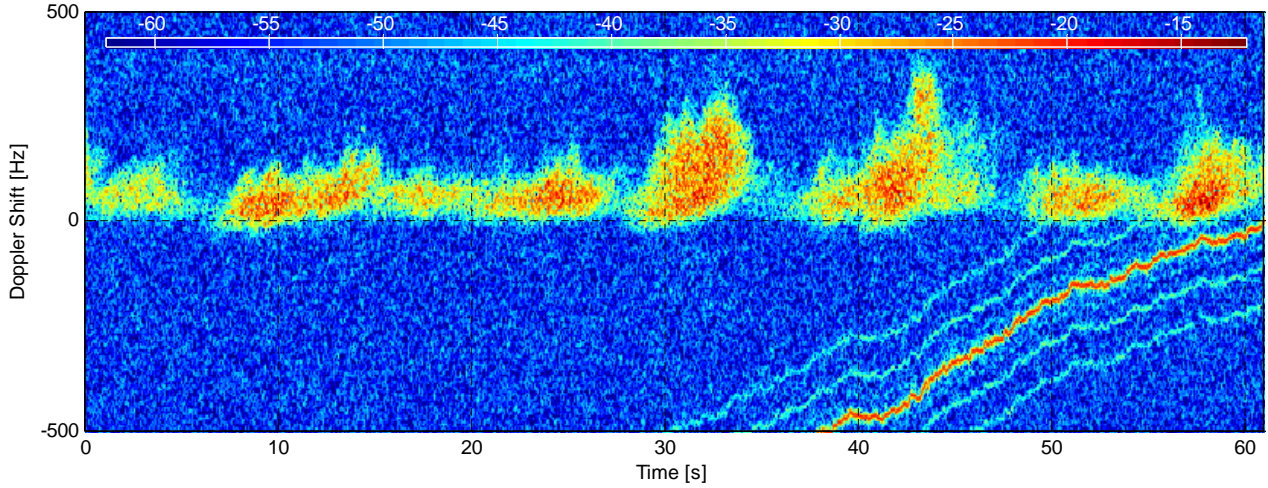


| Experiment Summary | Value | Radar Setup | Value |
|--------------------|--------------------------|--------------------|------------------------------|
| Type | Sea Clutter | Tx Frequency | 8 GHz |
| Date | 31-Jul-2006 | PRF | 5 kHz |
| Start Time | 17:13:12.125 | Tracking Range | 2300.94 m |
| Duration | 305830 PRI's (61.1658 s) | Range Extend | 1440 m (96 gates), 15 m res. |
| Original File | PF060731.017 | Waveform Type | Fixed Frequency |
| Original Path | \20060731_ifs | Waveform Bandwidth | N/A |
| Processor Version | FMSCP Ver 01.22 | Waveform File | SC_Fixed_256BL.txt |

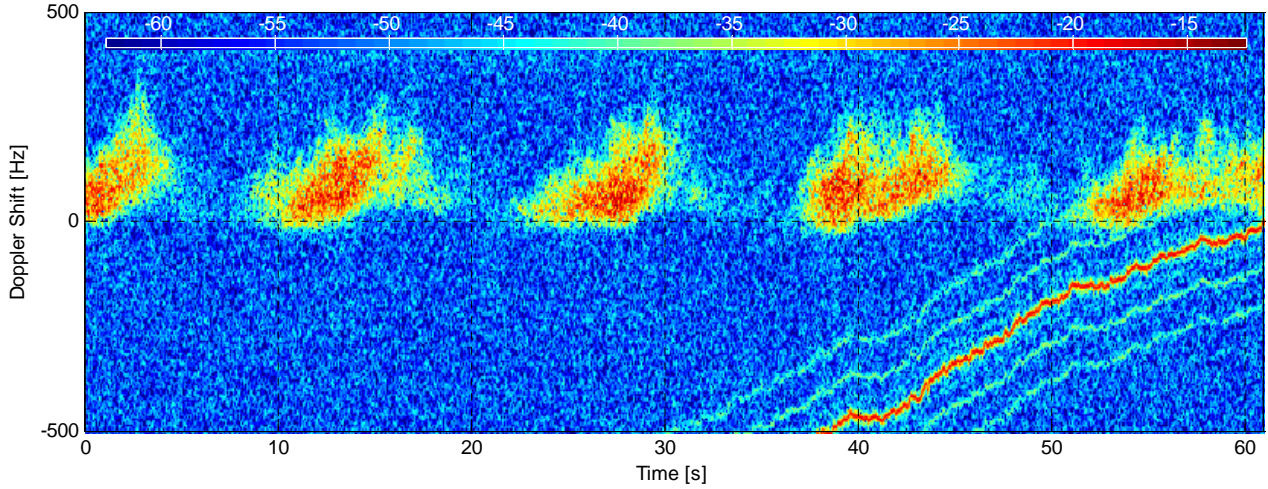
| Environment | Value | Geometry | Value | Processing | Value |
|---------------|------------------------|---------------|--------------------------|-------------------|------------------|
| Inst. Wind | 12.8 kts, 137.7 deg. N | Grazing Angle | 1.02 - 1.66 deg. | Odd Gates Offset | 2.1+3.7149i |
| Wind Gust | 18.7 kts, 143 deg. N | Antenna Azm. | 166.5 deg. N | Even Gates Offset | -2.8621-0.35298i |
| 8hr Avg. Wind | 19.5 kts, 159.9 deg. N | Antenna Elv. | -1.261 deg. | I/Q Imbalance | Bypassed |
| Wave (SWH) | 3.12 m, 184.1 deg. N | Antenna BW. | 1.9 deg. Az, 1.9 deg. El | Complex Conj. | Applied |
| | | GPS Data | Not applicable | Calibr. Coeff. | 193.2 dB |



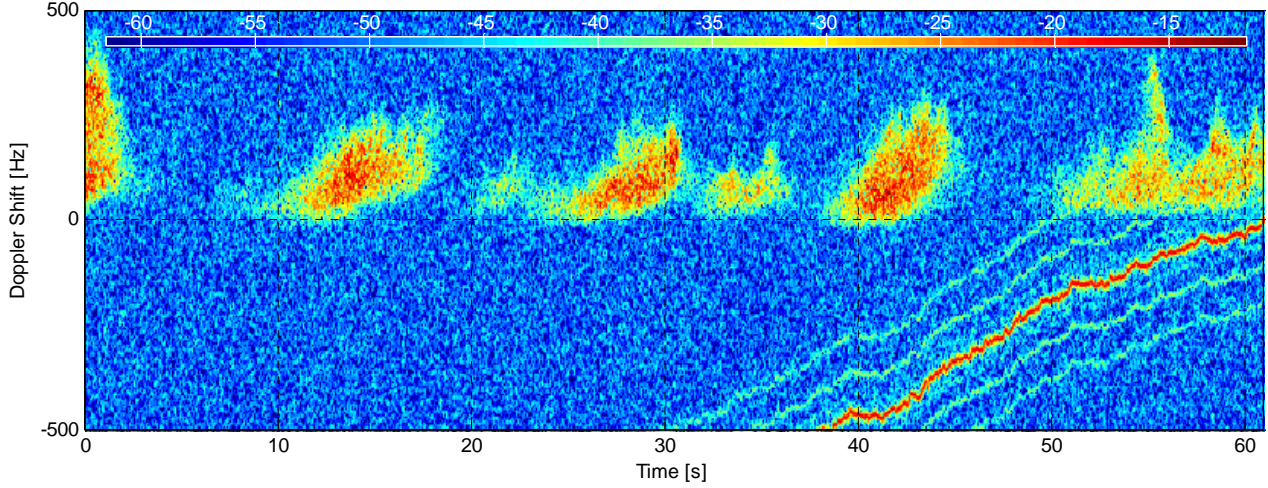
RCS [$\text{dBm}^2 \cdot \text{Hz}^{-1}$] at range 2885.9375 m (gate 40) - CFB14-001



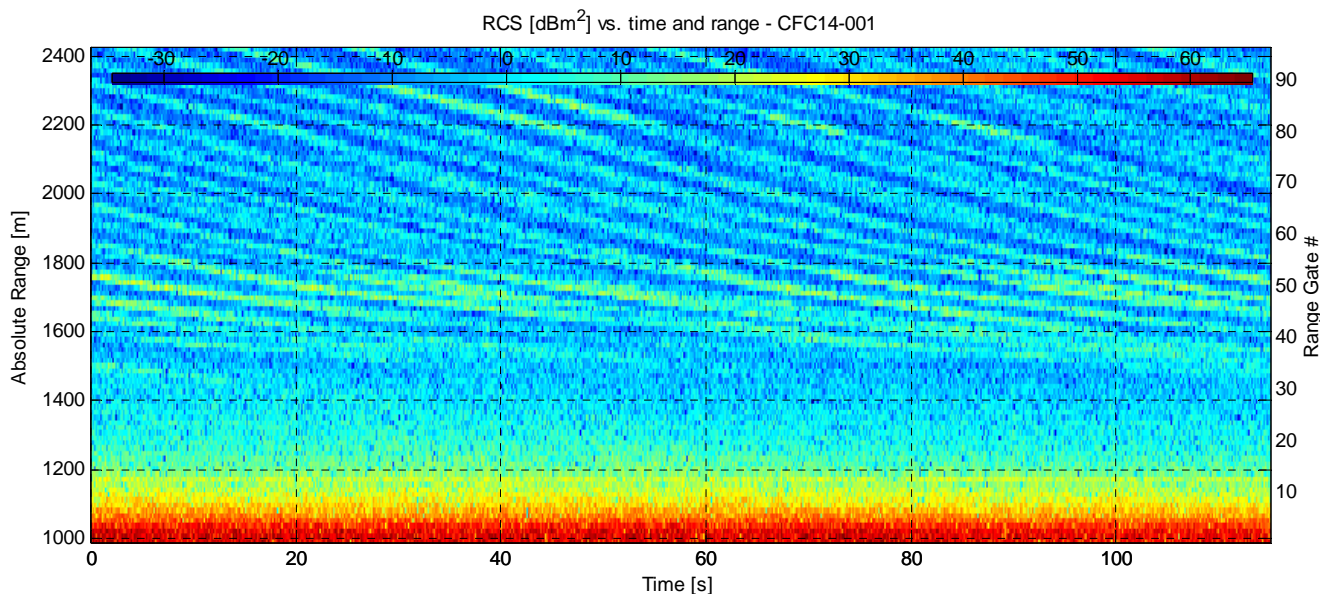
RCS [$\text{dBm}^2 \cdot \text{Hz}^{-1}$] at range 3185.9375 m (gate 60) - CFB14-001



RCS [$\text{dBm}^2 \cdot \text{Hz}^{-1}$] at range 3485.9375 m (gate 80) - CFB14-001

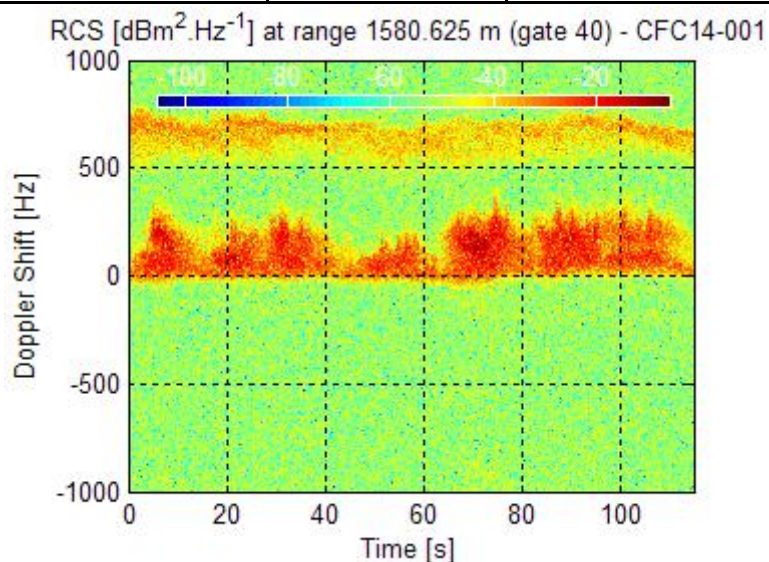
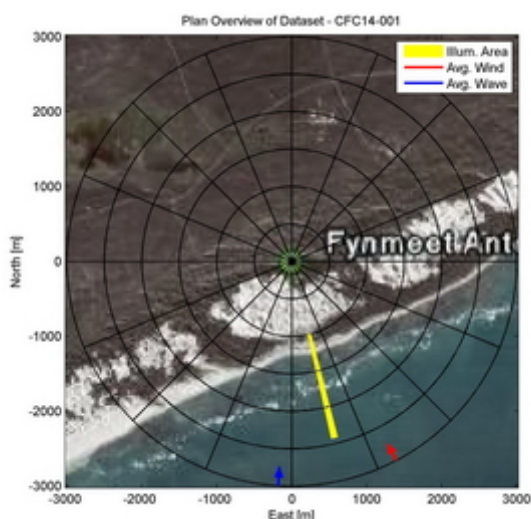


Dataset CFC14-001

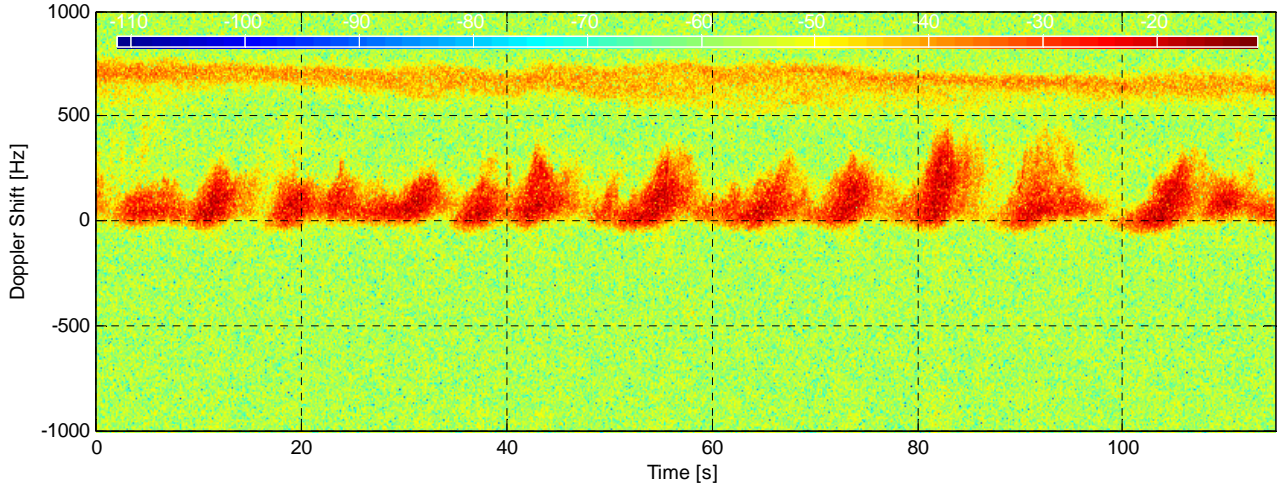


| Experiment Summary | Value | Radar Setup | Value |
|--------------------|---------------------------|--------------------|------------------------------|
| Type | Sea Clutter | Tx Frequency | 9 GHz |
| Date | 31-Jul-2006 | PRF | 5 kHz |
| Start Time | 13:57:35.843 | Tracking Range | 995.625 m |
| Duration | 574920 PRI's (114.9838 s) | Range Extend | 1440 m (96 gates), 15 m res. |
| Original File | PF060731.003 | Waveform Type | Fixed Frequency |
| Original Path | \20060731_ifs_g | Waveform Bandwidth | N/A |
| Processor Version | FMSCP Ver 01.22 | Waveform File | SC_Fixed_256BL.txt |

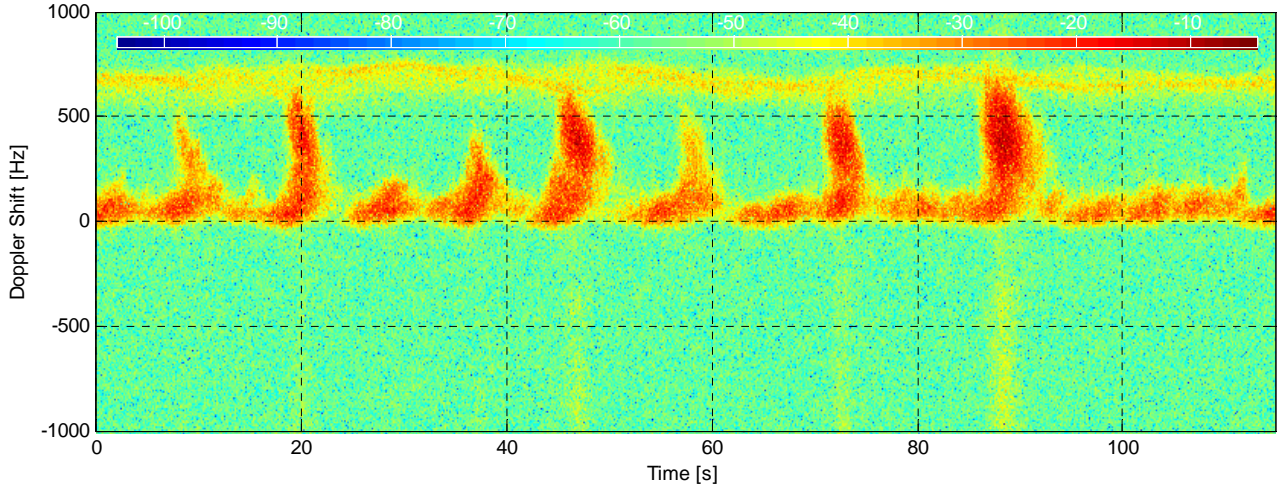
| Environment | Value | Geometry | Value | Processing | Value |
|---------------|------------------------|---------------|--------------------------|-------------------|-----------------|
| Inst. Wind | 18.3 kts, 152.6 deg. N | Grazing Angle | 1.58 - 3.86 deg. | Odd Gates Offset | -3.5746+2.8056i |
| Wind Gust | 27.6 kts, 162 deg. N | Antenna Azm. | 166.4 deg. N | Even Gates Offset | 1.0796-1.363i |
| 8hr Avg. Wind | 14.2 kts, 170.9 deg. N | Antenna Elv. | -1.184 deg. | I/Q Imbalance | Bypassed |
| Wave (SWH) | 3 m, 183.6 deg. N | Antenna BW. | 1.8 deg. Az, 1.8 deg. El | Complex Conj. | Applied |
| | | GPS Data | Not applicable | Calibr. Coeff. | 190.9 dB |



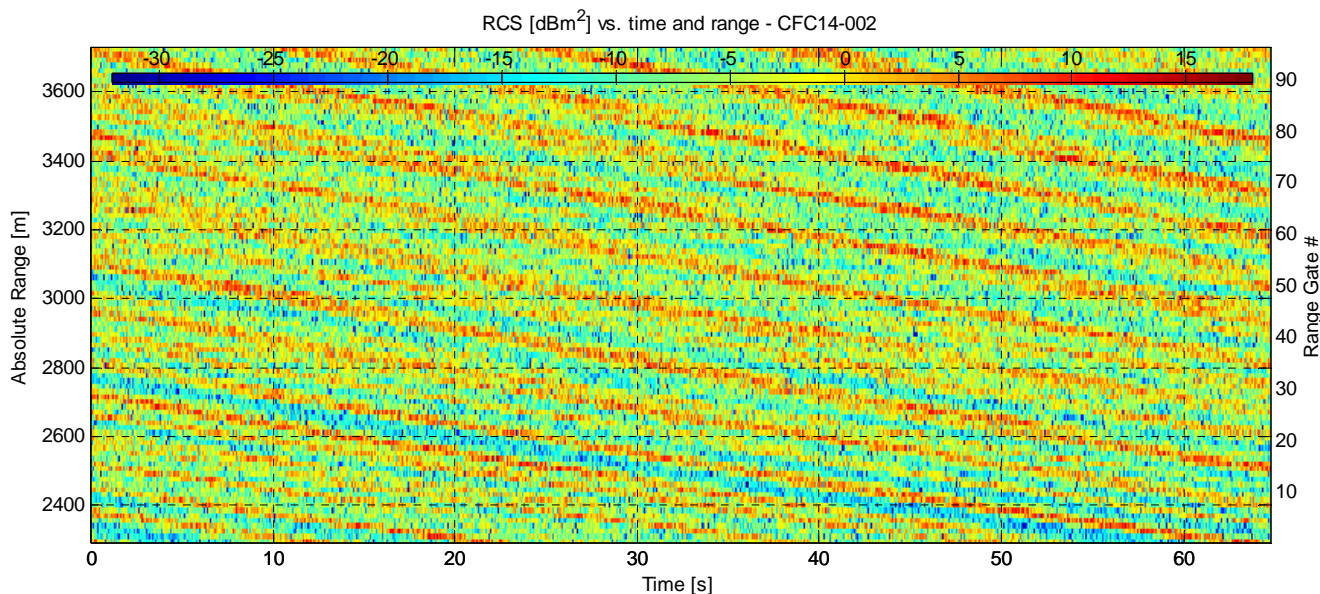
RCS [dBm².Hz⁻¹] at range 1880.625 m (gate 60) - CFC14-001



RCS [dBm².Hz⁻¹] at range 2180.625 m (gate 80) - CFC14-001

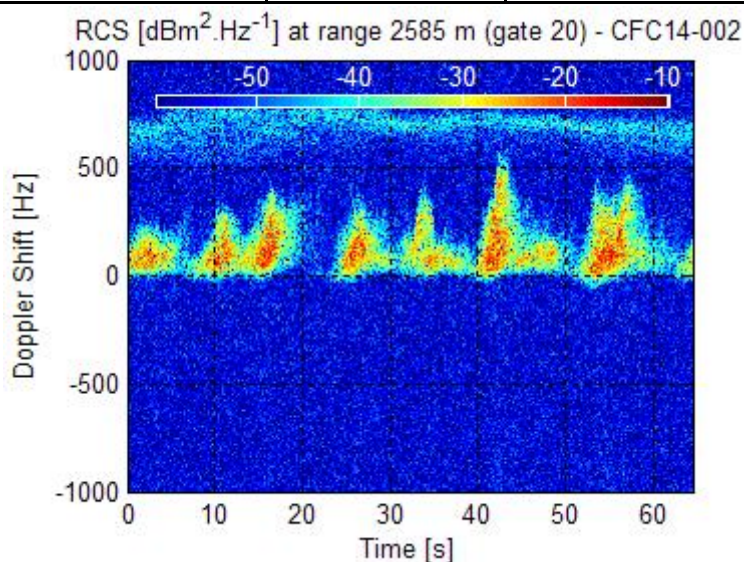
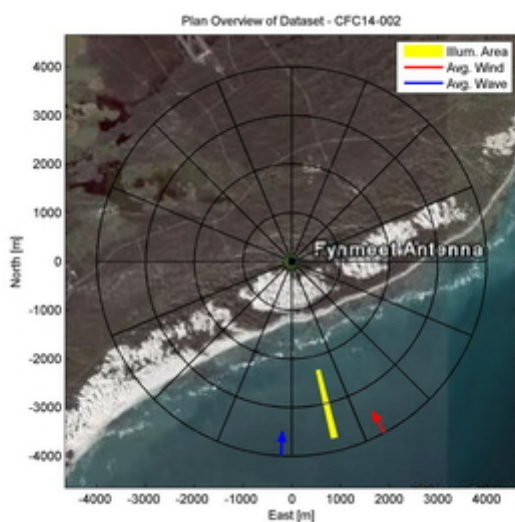


Dataset CFC14-002

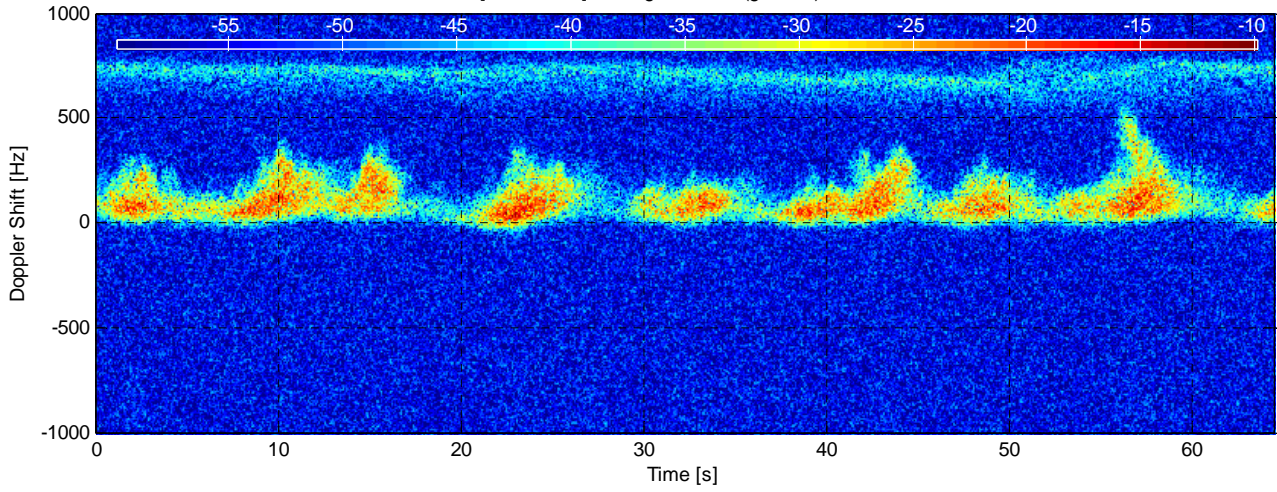


| Experiment Summary | Value | Radar Setup | Value |
|--------------------|--------------------------|--------------------|------------------------------|
| Type | Sea Clutter | Tx Frequency | 9 GHz |
| Date | 31-Jul-2006 | PRF | 5 kHz |
| Start Time | 14:01:26.515 | Tracking Range | 2300 m |
| Duration | 323530 PRI's (64.7058 s) | Range Extend | 1440 m (96 gates), 15 m res. |
| Original File | PF060731.004 | Waveform Type | Fixed Frequency |
| Original Path | \20060731_ifs_g | Waveform Bandwidth | N/A |
| Processor Version | FMSCP Ver 01.22 | Waveform File | SC_Fixed_256BL.txt |

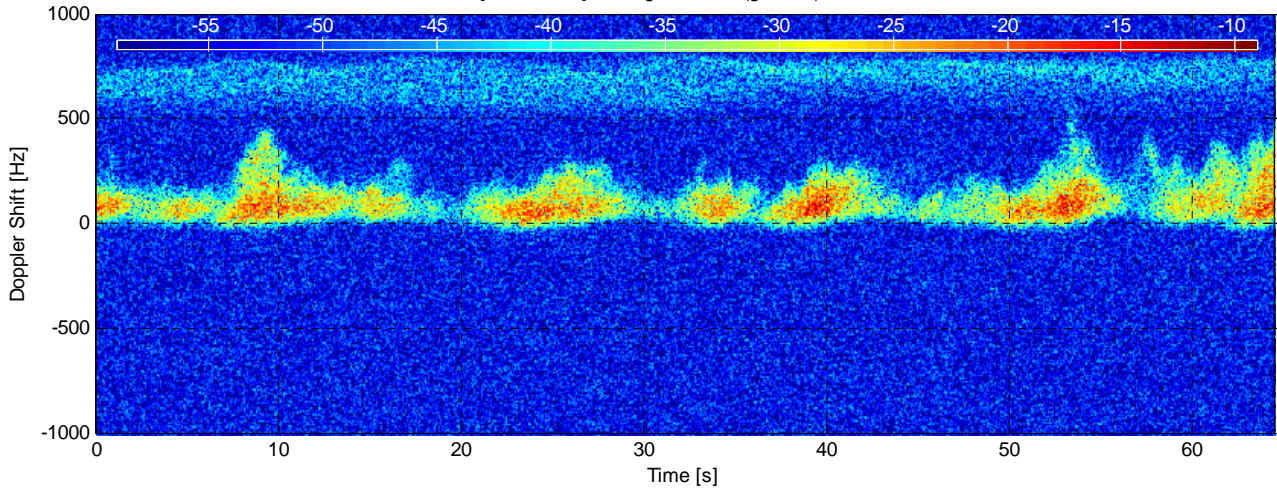
| Environment | Value | Geometry | Value | Processing | Value |
|---------------|------------------------|---------------|--------------------------|-------------------|-----------------|
| Inst. Wind | 18.3 kts, 151.8 deg. N | Grazing Angle | 1.02 - 1.66 deg. | Odd Gates Offset | 1.2517-0.58421i |
| Wind Gust | 27.8 kts, 159 deg. N | Antenna Azm. | 166.4 deg. N | Even Gates Offset | -3.5026+2.5063i |
| 8hr Avg. Wind | 14.3 kts, 170.5 deg. N | Antenna Elv. | -1.187 deg. | I/Q Imbalance | Bypassed |
| Wave (SWH) | 3 m, 183.3 deg. N | Antenna BW. | 1.8 deg. Az, 1.8 deg. El | Complex Conj. | Applied |
| | | GPS Data | Not applicable | Calibr. Coeff. | 190.9 dB |



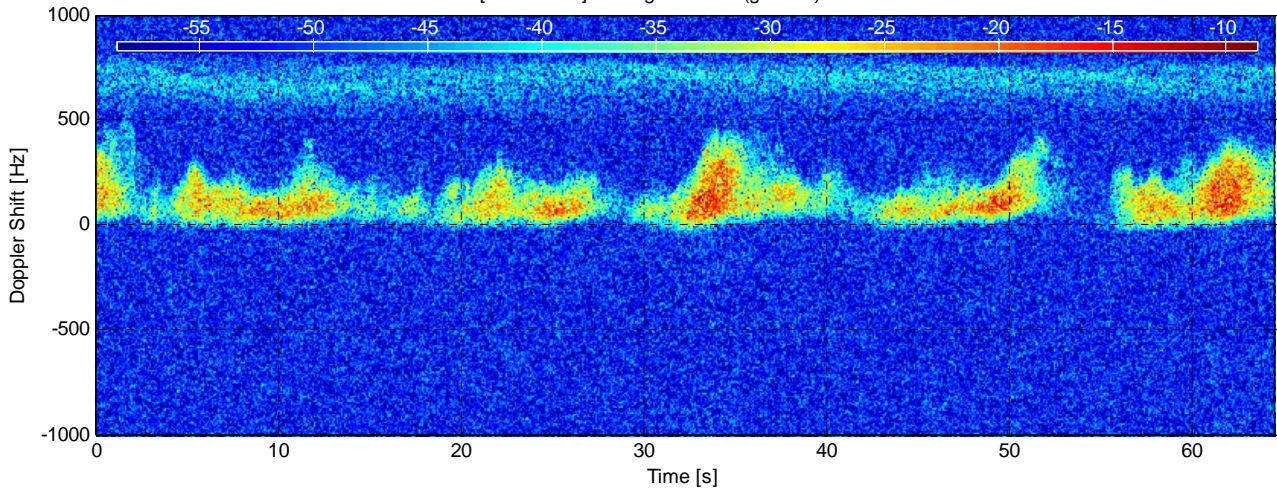
RCS [dBm².Hz⁻¹] at range 2885 m (gate 40) - CFC14-002



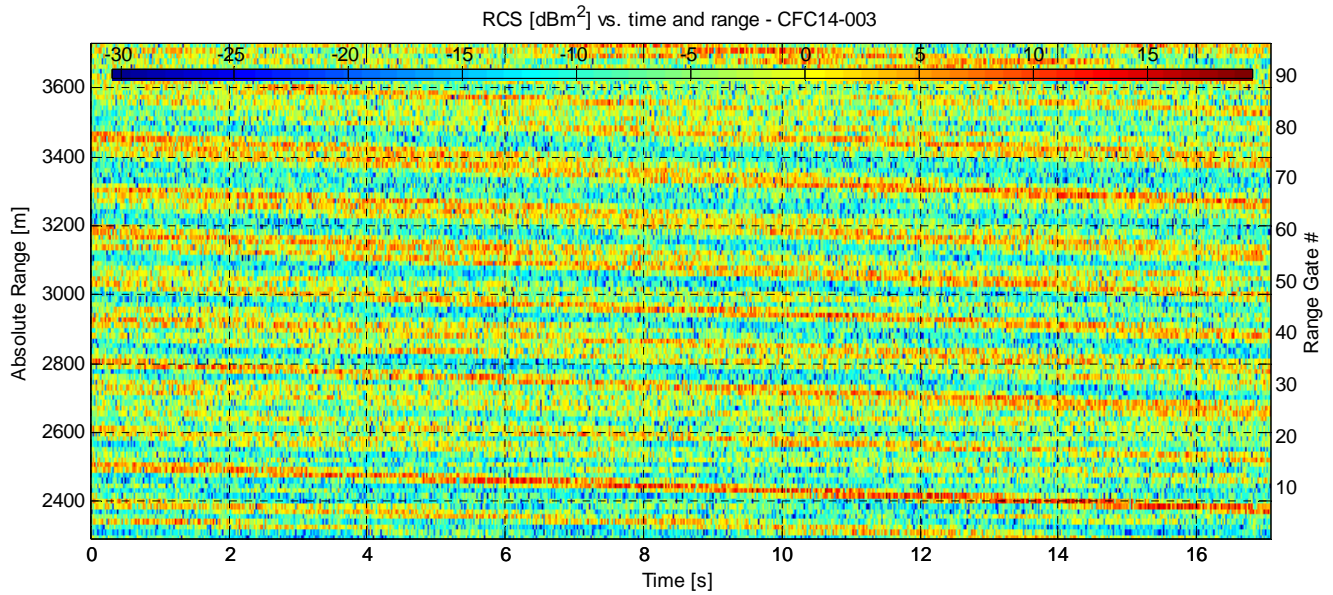
RCS [dBm².Hz⁻¹] at range 3185 m (gate 60) - CFC14-002



RCS [dBm².Hz⁻¹] at range 3485 m (gate 80) - CFC14-002

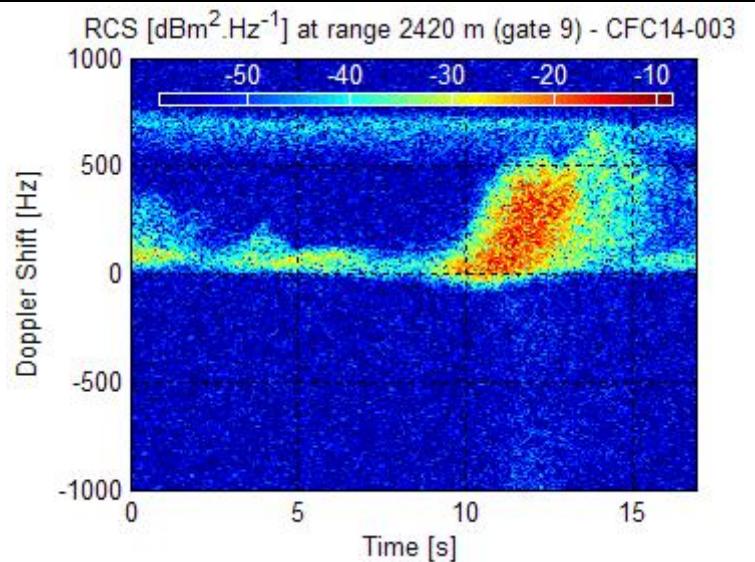
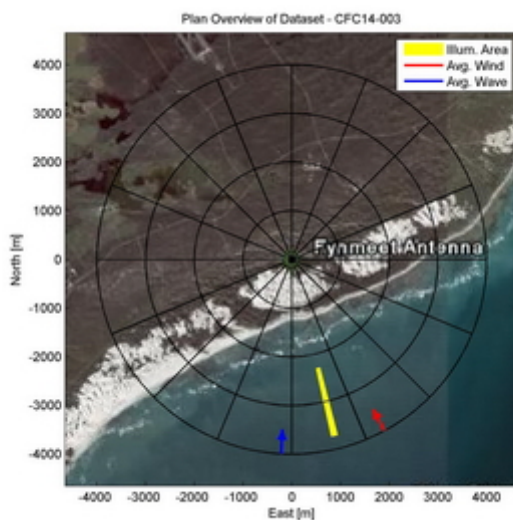


Dataset CFC14-003

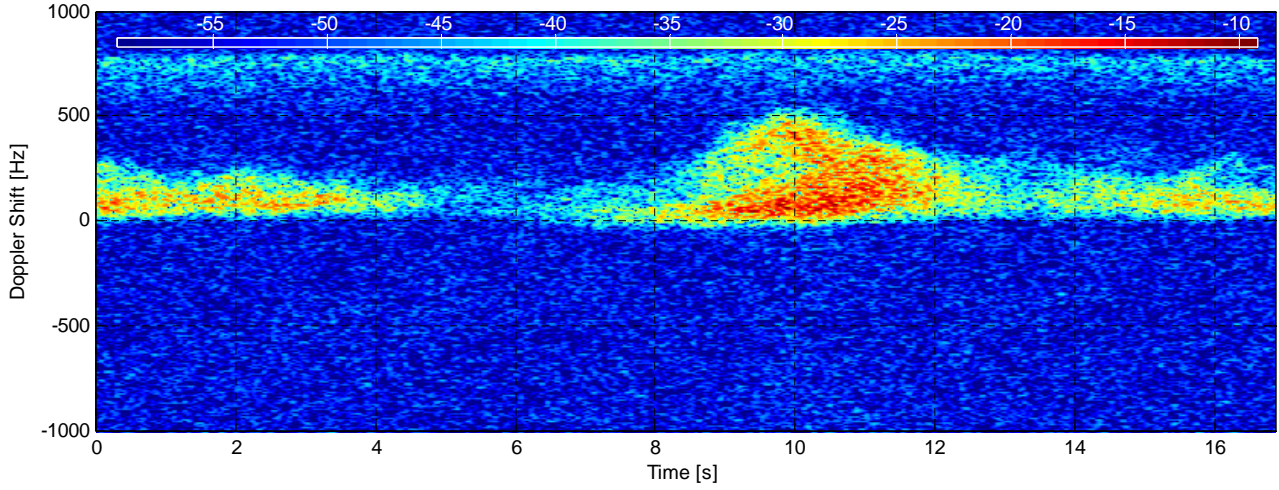


| Experiment Summary | Value | Radar Setup | Value |
|--------------------|-------------------------|--------------------|------------------------------|
| Type | Sea Clutter | Tx Frequency | 9 GHz |
| Date | 31-Jul-2006 | PRF | 5 kHz |
| Start Time | 14:02:31.229 | Tracking Range | 2300 m |
| Duration | 85280 PRI's (17.0558 s) | Range Extend | 1440 m (96 gates), 15 m res. |
| Original File | PF060731.004 | Waveform Type | Fixed Frequency |
| Original Path | \20060731_ifs_g | Waveform Bandwidth | N/A |
| Processor Version | FMSCP Ver 01.22 | Waveform File | SC_Fixed_256BL.txt |

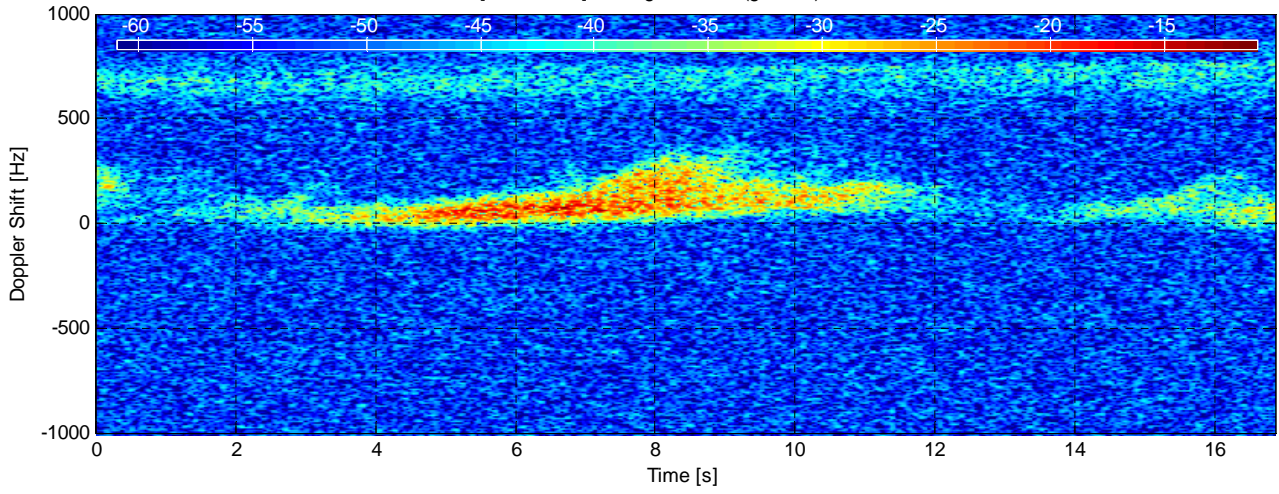
| Environment | Value | Geometry | Value | Processing | Value |
|---------------|------------------------|---------------|--------------------------|-------------------|-----------------|
| Inst. Wind | 18.3 kts, 151.6 deg. N | Grazing Angle | 1.02 - 1.66 deg. | Odd Gates Offset | 1.226-0.54518i |
| Wind Gust | 27.8 kts, 159 deg. N | Antenna Azm. | 166.4 deg. N | Even Gates Offset | -3.5722+2.4554i |
| 8hr Avg. Wind | 14.3 kts, 170.4 deg. N | Antenna Elv. | -1.187 deg. | I/Q Imbalance | Bypassed |
| Wave (SWH) | 3 m, 183.2 deg. N | Antenna BW. | 1.8 deg. Az, 1.8 deg. El | Complex Conj. | Applied |
| | | GPS Data | Not applicable | Calibr. Coeff. | 190.9 dB |



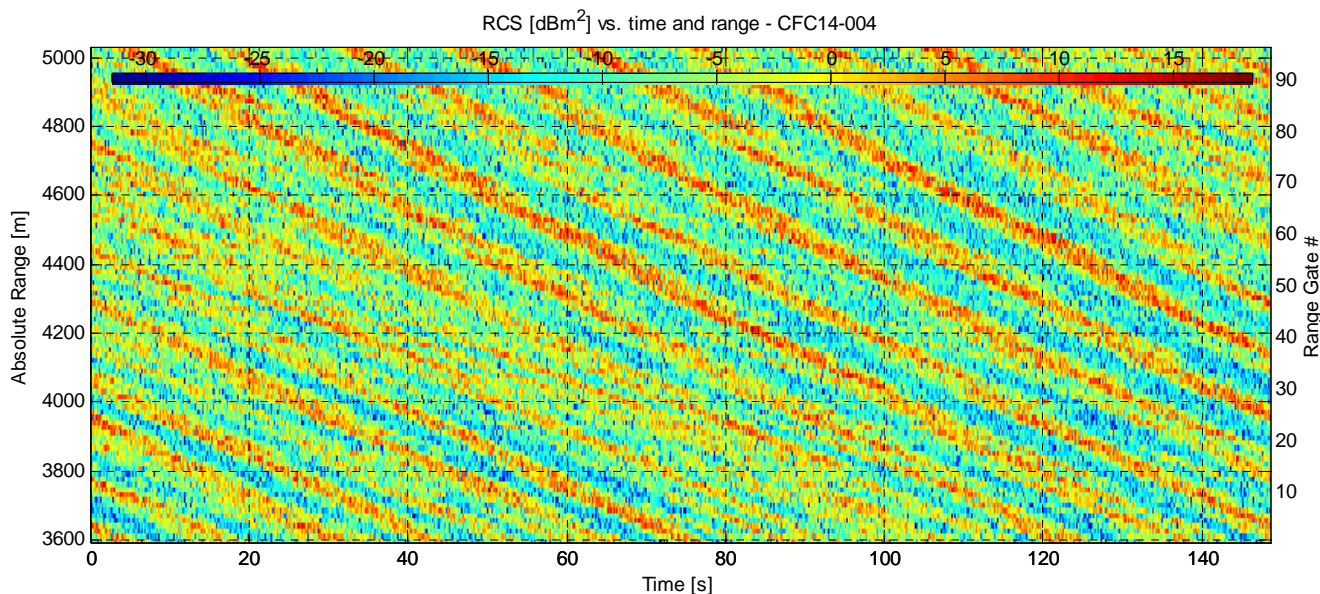
RCS [dBm².Hz⁻¹] at range 2945 m (gate 44) - CFC14-003



RCS [dBm².Hz⁻¹] at range 3365 m (gate 72) - CFC14-003

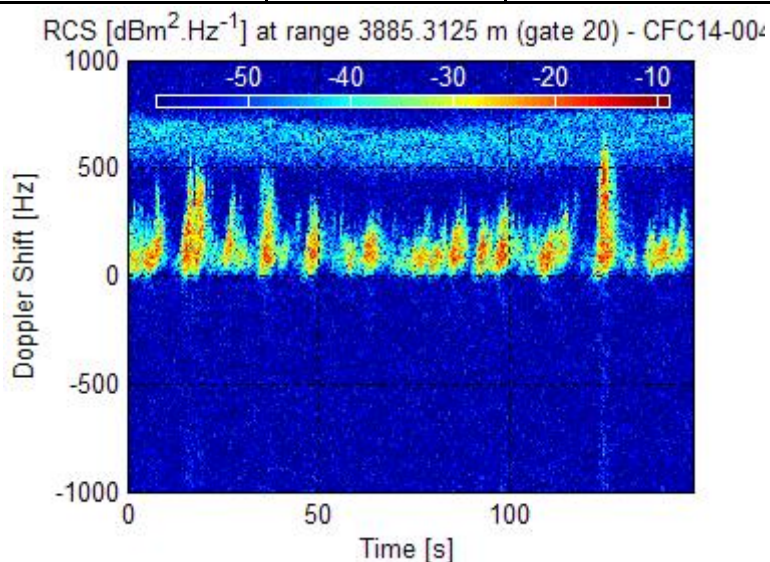
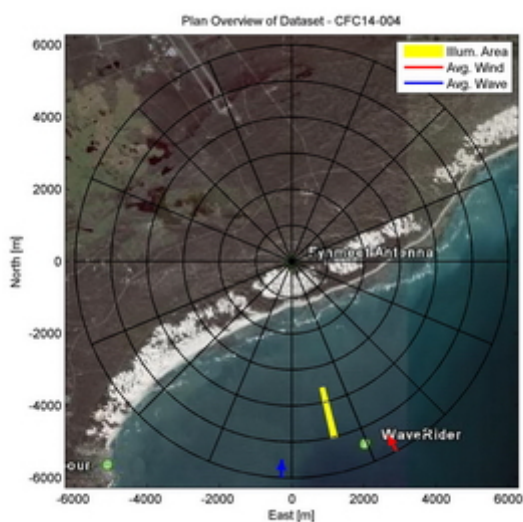


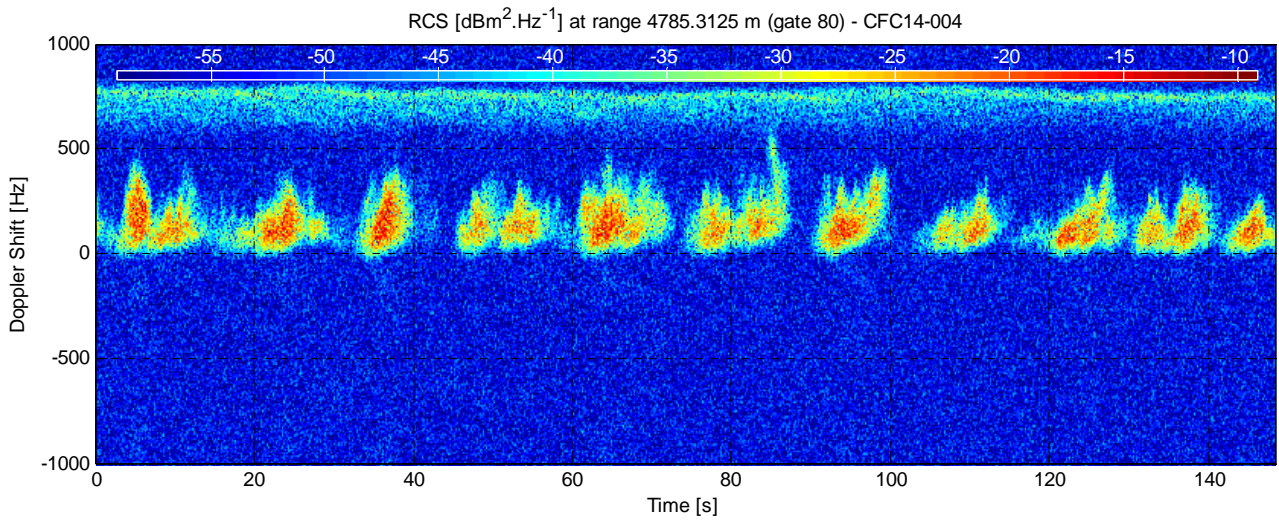
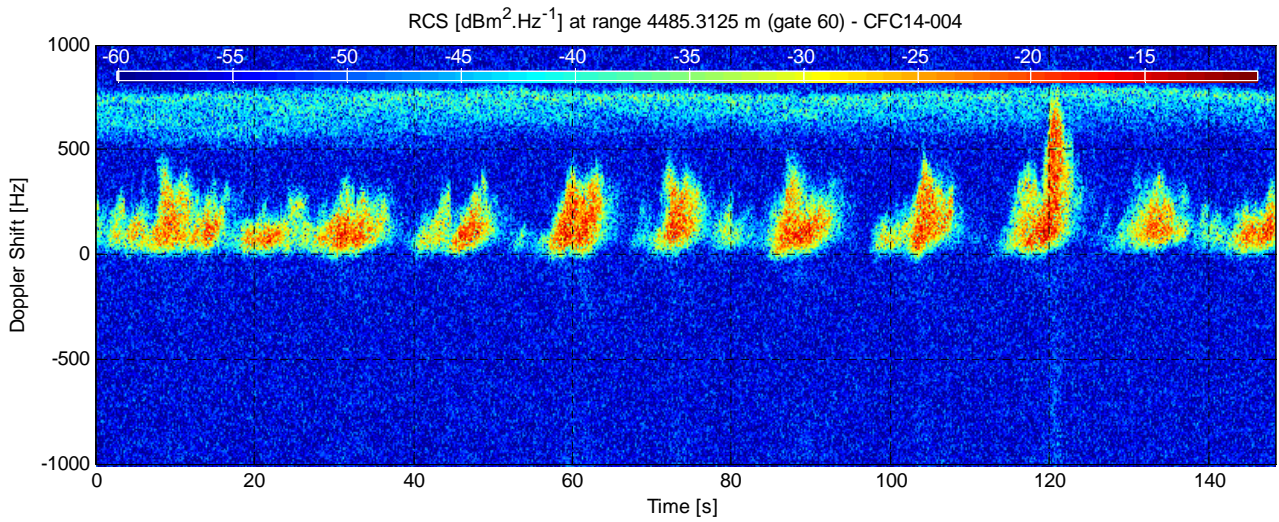
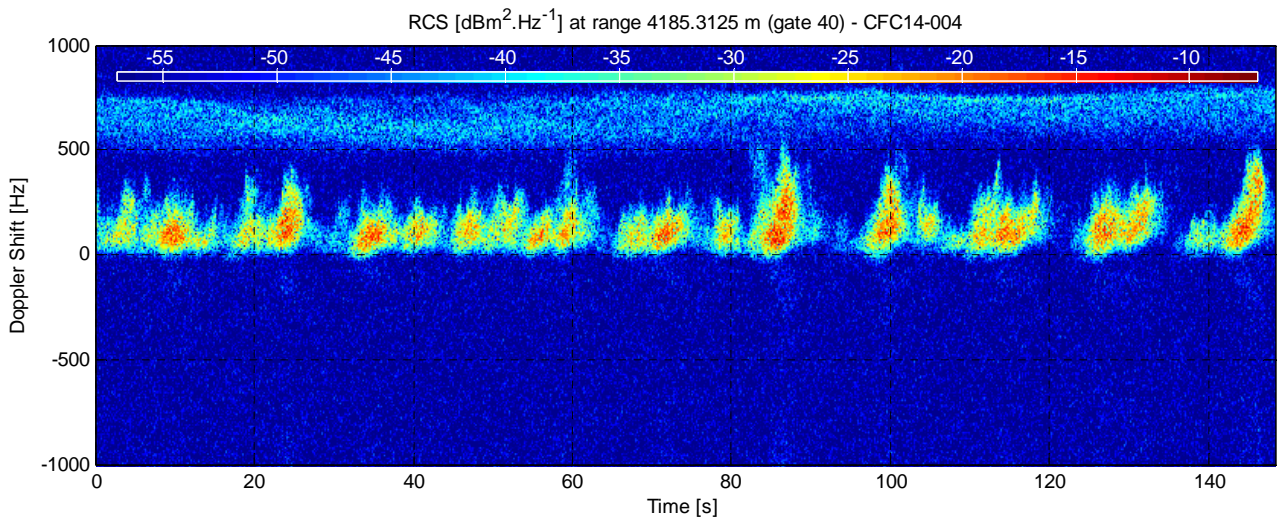
Dataset CFC14-004



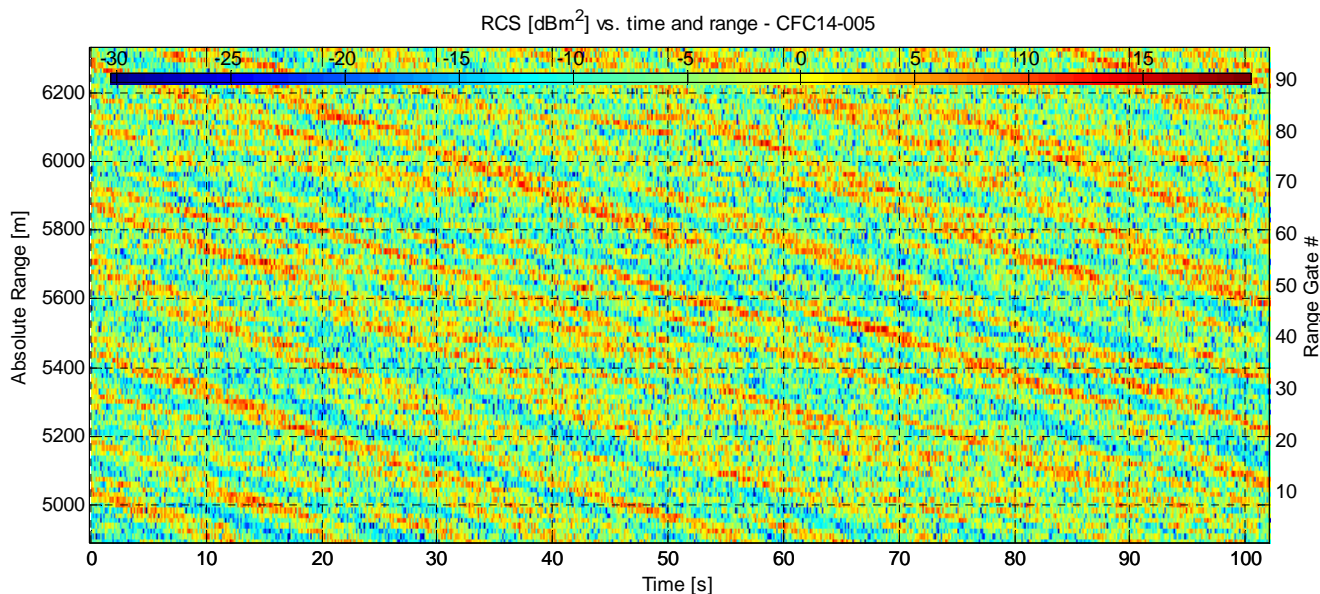
| Experiment Summary | Value | Radar Setup | Value |
|--------------------|---------------------------|--------------------|------------------------------|
| Type | Sea Clutter | Tx Frequency | 9 GHz |
| Date | 31-Jul-2006 | PRF | 5 kHz |
| Start Time | 14:04:42.734 | Tracking Range | 3600.31 m |
| Duration | 742730 PRI's (148.5458 s) | Range Extend | 1440 m (96 gates), 15 m res. |
| Original File | PF060731.005 | Waveform Type | Fixed Frequency |
| Original Path | \20060731_ifs_g | Waveform Bandwidth | N/A |
| Processor Version | FMSCP Ver 01.22 | Waveform File | SC_Fixed_256BL.txt |

| Environment | Value | Geometry | Value | Processing | Value |
|---------------|------------------------|---------------|--------------------------|-------------------|-----------------|
| Inst. Wind | 18.3 kts, 151.3 deg. N | Grazing Angle | 0.747 - 1.05 deg. | Odd Gates Offset | -3.5154+2.7676i |
| Wind Gust | 27.8 kts, 159 deg. N | Antenna Azm. | 166.4 deg. N | Even Gates Offset | 1.3995-0.62997i |
| 8hr Avg. Wind | 14.4 kts, 170.3 deg. N | Antenna Elv. | -1.187 deg. | I/Q Imbalance | Bypassed |
| Wave (SWH) | 3 m, 183 deg. N | Antenna BW. | 1.8 deg. Az, 1.8 deg. El | Complex Conj. | Applied |
| | | GPS Data | Not applicable | Calibr. Coeff. | 190.9 dB |



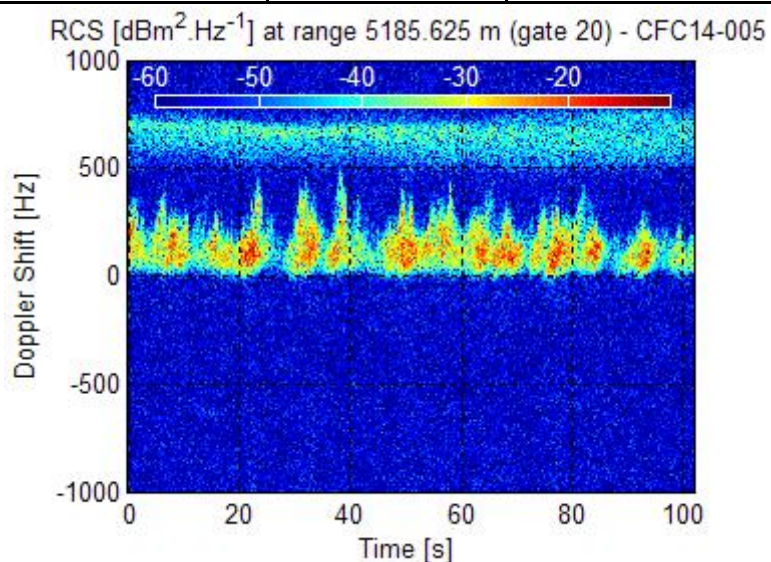
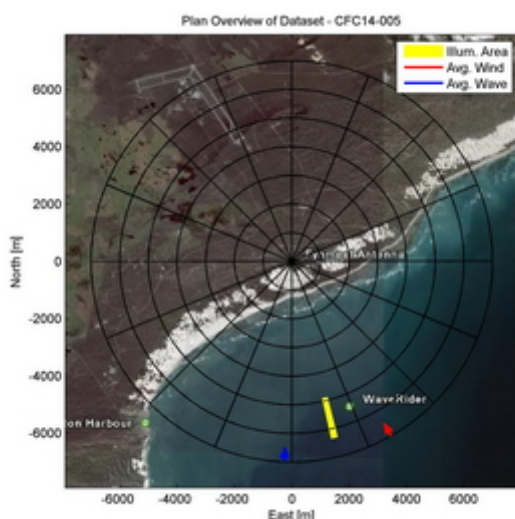


Dataset CFC14-005

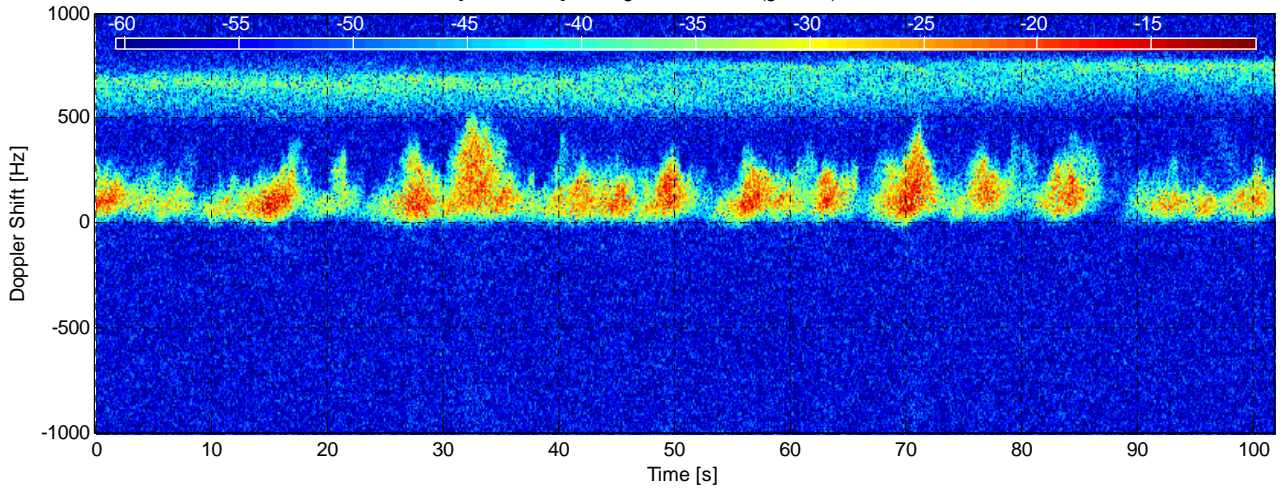


| Experiment Summary | Value | Radar Setup | Value |
|--------------------|---------------------------|--------------------|------------------------------|
| Type | Sea Clutter | Tx Frequency | 9 GHz |
| Date | 31-Jul-2006 | PRF | 5 kHz |
| Start Time | 14:15:26.609 | Tracking Range | 4900.63 m |
| Duration | 510480 PRI's (102.0958 s) | Range Extend | 1440 m (96 gates), 15 m res. |
| Original File | PF060731.007 | Waveform Type | Fixed Frequency |
| Original Path | \20060731_ifs_g | Waveform Bandwidth | N/A |
| Processor Version | FMSCP Ver 01.22 | Waveform File | SC_Fixed_256BL.txt |

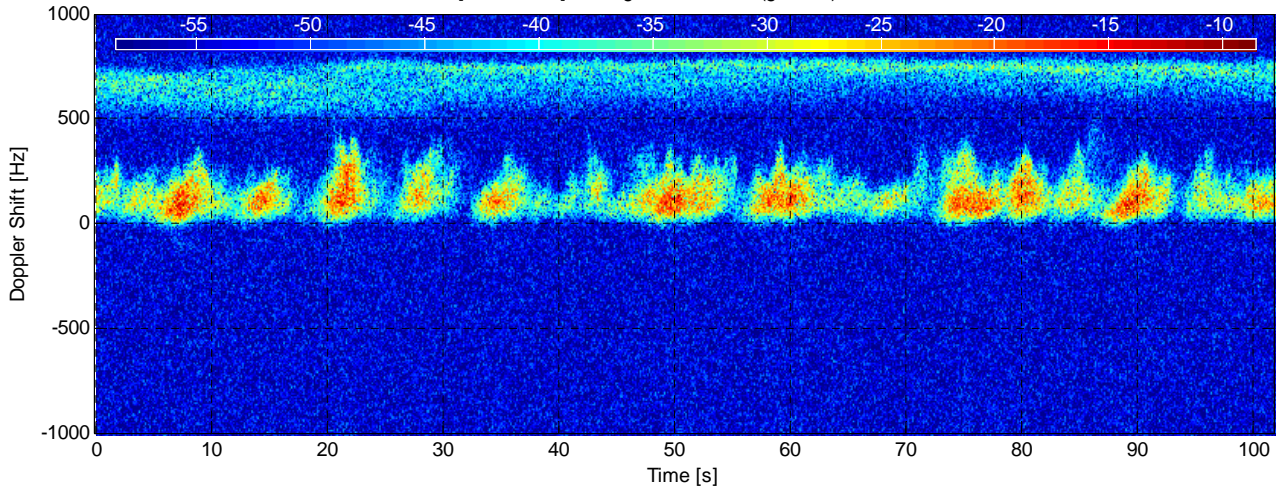
| Environment | Value | Geometry | Value | Processing | Value |
|---------------|------------------------|---------------|--------------------------|-------------------|-----------------|
| Inst. Wind | 18.2 kts, 150.4 deg. N | Grazing Angle | 0.586 - 0.767 deg. | Odd Gates Offset | 1.4968-0.61417i |
| Wind Gust | 27.8 kts, 159 deg. N | Antenna Azm. | 166.4 deg. N | Even Gates Offset | -3.0914+3.1064i |
| 8hr Avg. Wind | 14.8 kts, 169.3 deg. N | Antenna Elv. | -1.189 deg. | I/Q Imbalance | Bypassed |
| Wave (SWH) | 3 m, 182.2 deg. N | Antenna BW. | 1.8 deg. Az, 1.8 deg. El | Complex Conj. | Applied |
| | | GPS Data | Not applicable | Calibr. Coeff. | 190.9 dB |



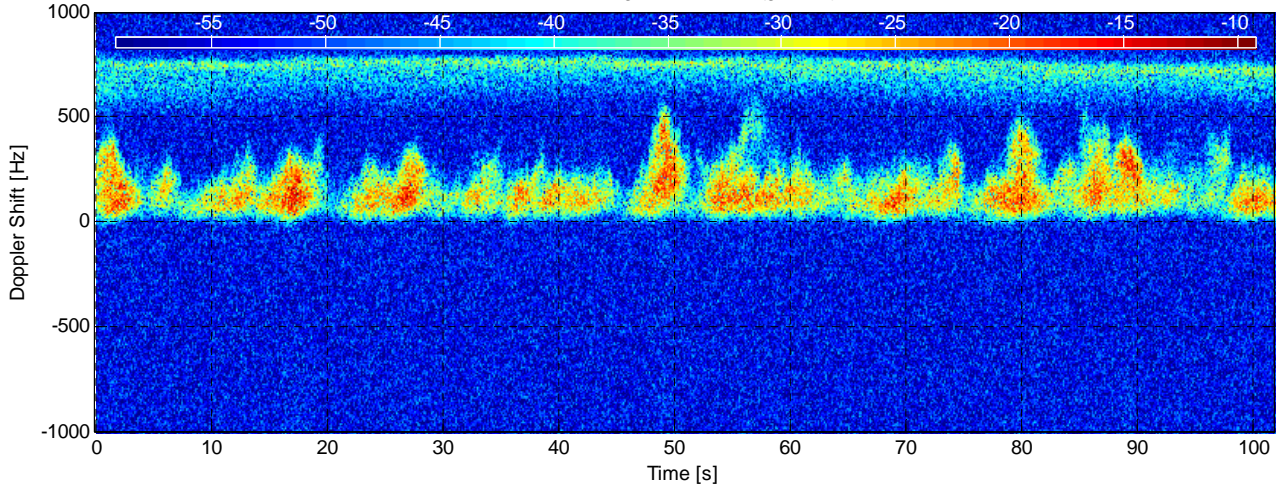
RCS [dBm².Hz⁻¹] at range 5485.625 m (gate 40) - CFC14-005



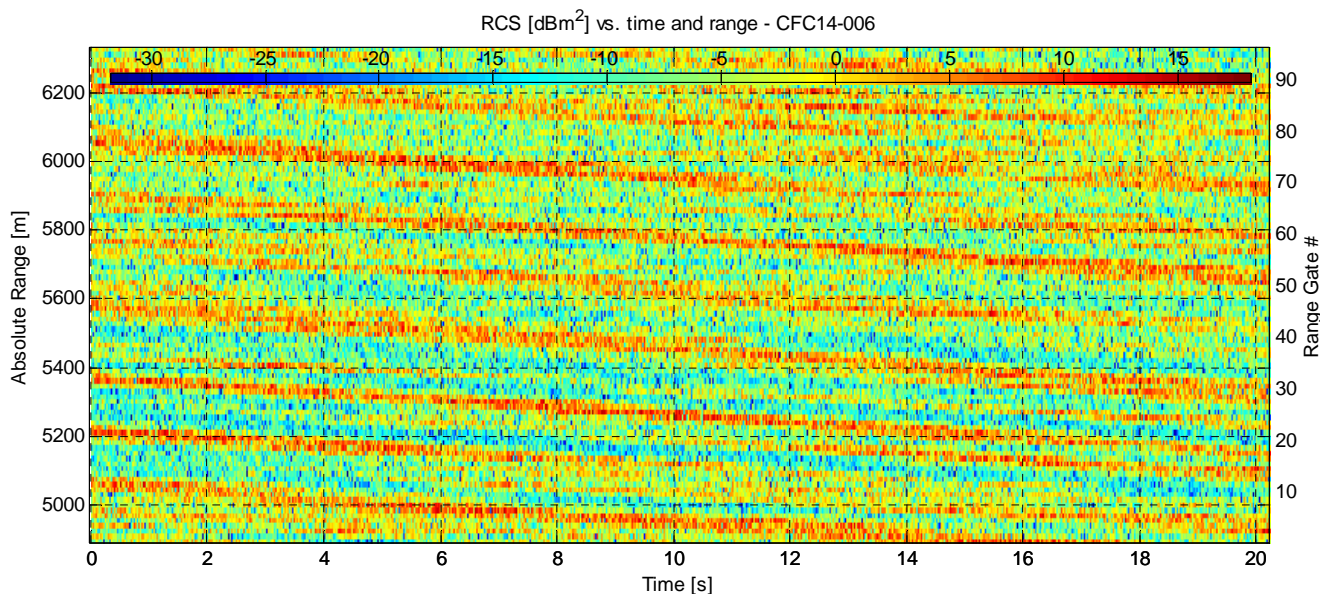
RCS [dBm².Hz⁻¹] at range 5785.625 m (gate 60) - CFC14-005



RCS [dBm².Hz⁻¹] at range 6085.625 m (gate 80) - CFC14-005

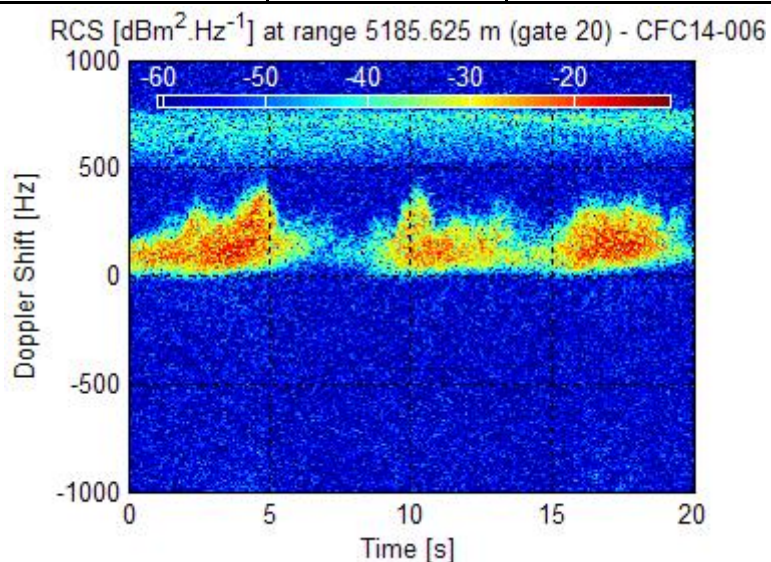
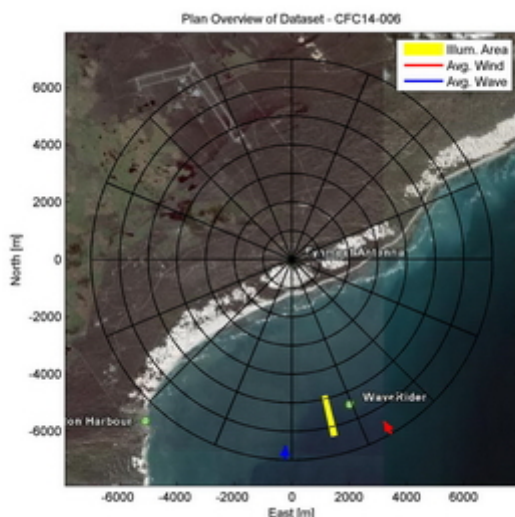


Dataset CFC14-006

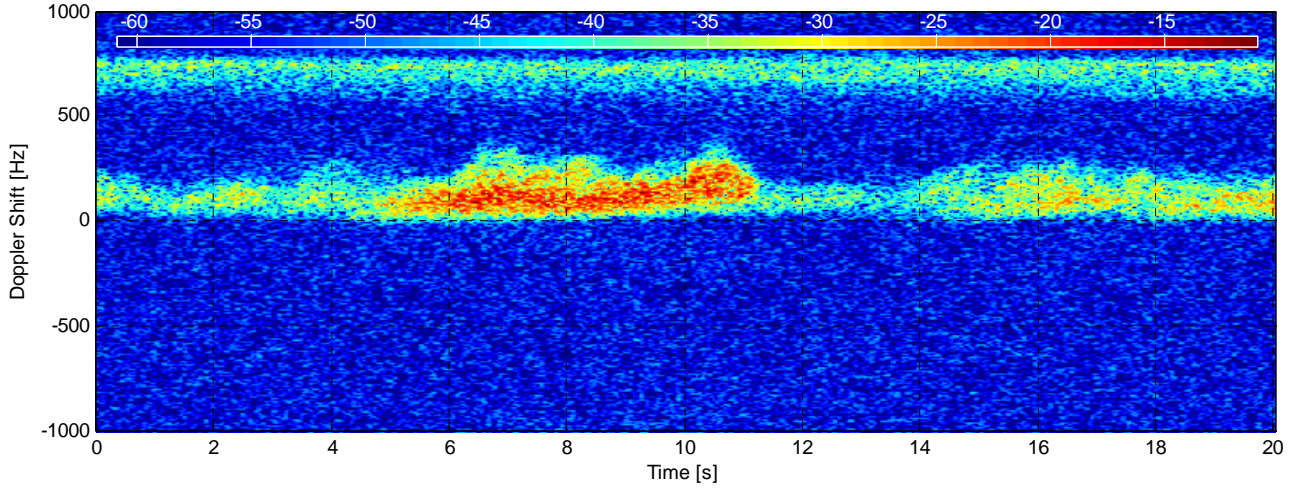


| Experiment Summary | Value | Radar Setup | Value |
|--------------------|--------------------------|--------------------|------------------------------|
| Type | Sea Clutter | Tx Frequency | 9 GHz |
| Date | 31-Jul-2006 | PRF | 5 kHz |
| Start Time | 14:17:08.713 | Tracking Range | 4900.63 m |
| Duration | 101140 PRI's (20.2278 s) | Range Extend | 1440 m (96 gates), 15 m res. |
| Original File | PF060731.007 | Waveform Type | Fixed Frequency |
| Original Path | \20060731_ifs_g | Waveform Bandwidth | N/A |
| Processor Version | FMSCP Ver 01.22 | Waveform File | SC_Fixed_256BL.txt |

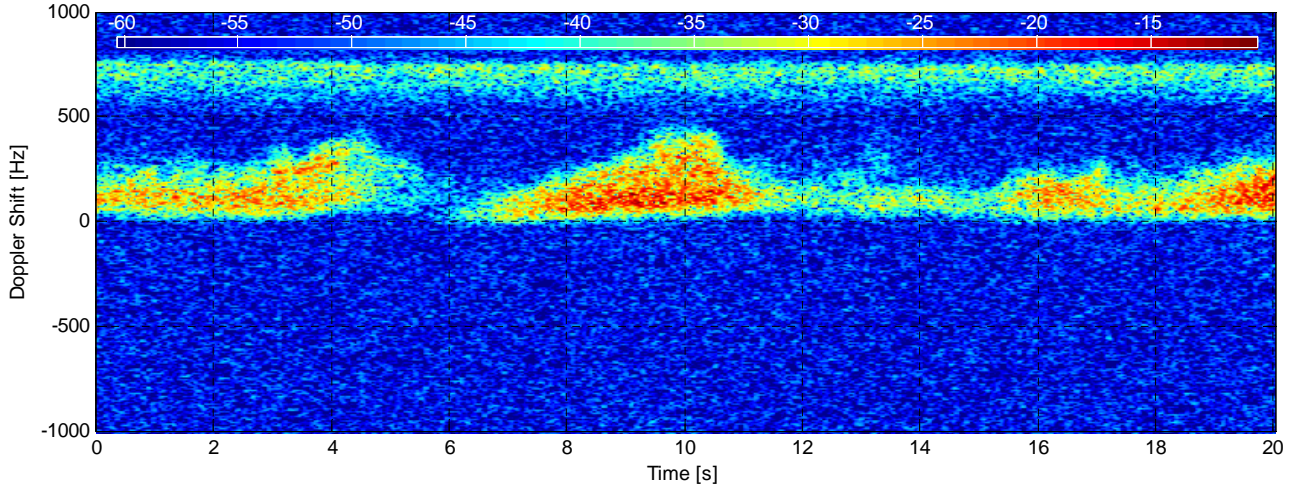
| Environment | Value | Geometry | Value | Processing | Value |
|---------------|------------------------|---------------|--------------------------|-------------------|-----------------|
| Inst. Wind | 18.2 kts, 150.3 deg. N | Grazing Angle | 0.586 - 0.767 deg. | Odd Gates Offset | 1.4989-0.59317i |
| Wind Gust | 27.8 kts, 159 deg. N | Antenna Azm. | 166.4 deg. N | Even Gates Offset | -3.0471+3.1778i |
| 8hr Avg. Wind | 14.9 kts, 169.1 deg. N | Antenna Elv. | -1.189 deg. | I/Q Imbalance | Bypassed |
| Wave (SWH) | 3 m, 182.1 deg. N | Antenna BW. | 1.8 deg. Az, 1.8 deg. El | Complex Conj. | Applied |
| | | GPS Data | Not applicable | Calibr. Coeff. | 190.9 dB |



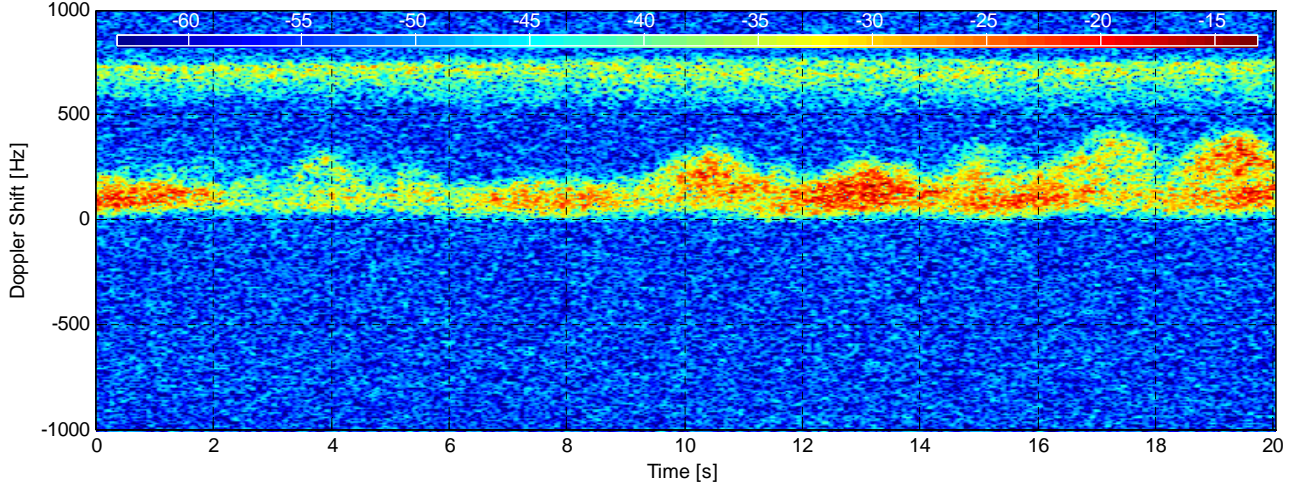
RCS [$\text{dBm}^2 \cdot \text{Hz}^{-1}$] at range 5485.625 m (gate 40) - CFC14-006



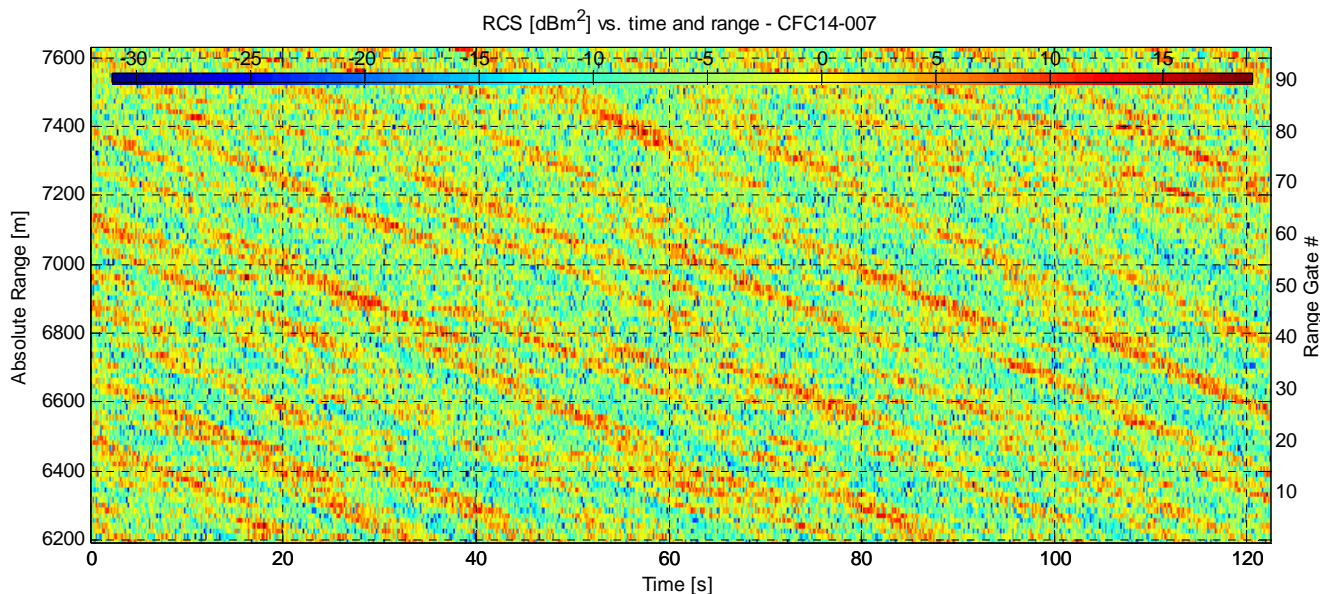
RCS [$\text{dBm}^2 \cdot \text{Hz}^{-1}$] at range 5785.625 m (gate 60) - CFC14-006



RCS [$\text{dBm}^2 \cdot \text{Hz}^{-1}$] at range 6085.625 m (gate 80) - CFC14-006

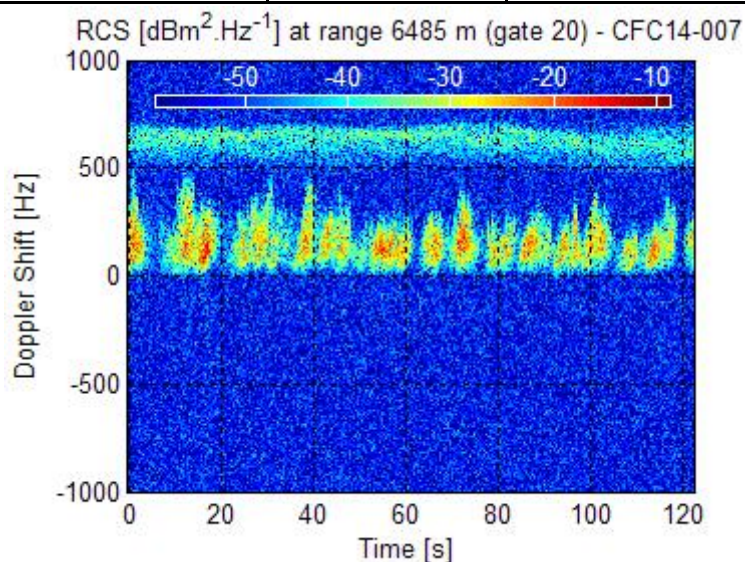
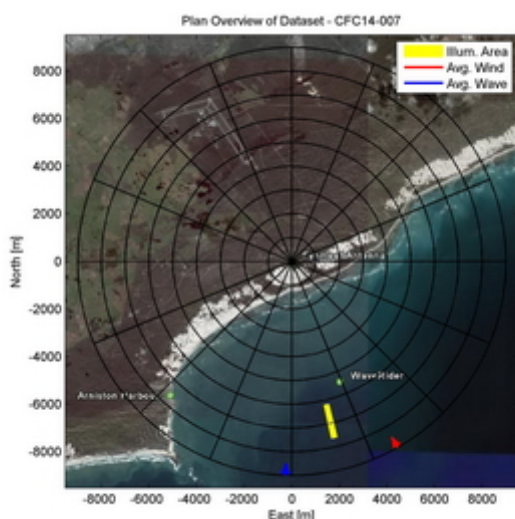


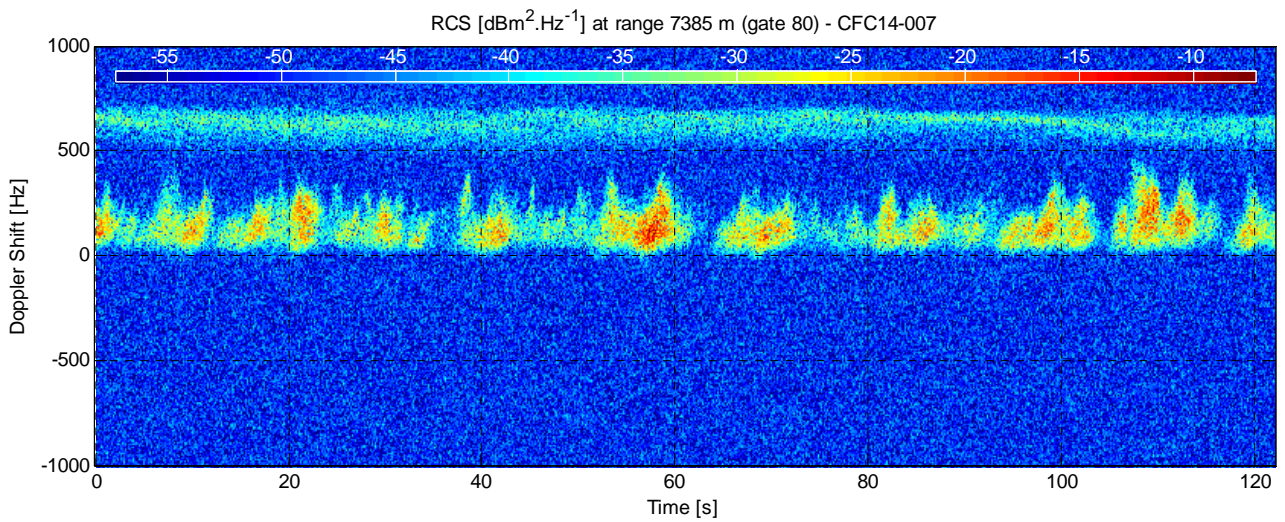
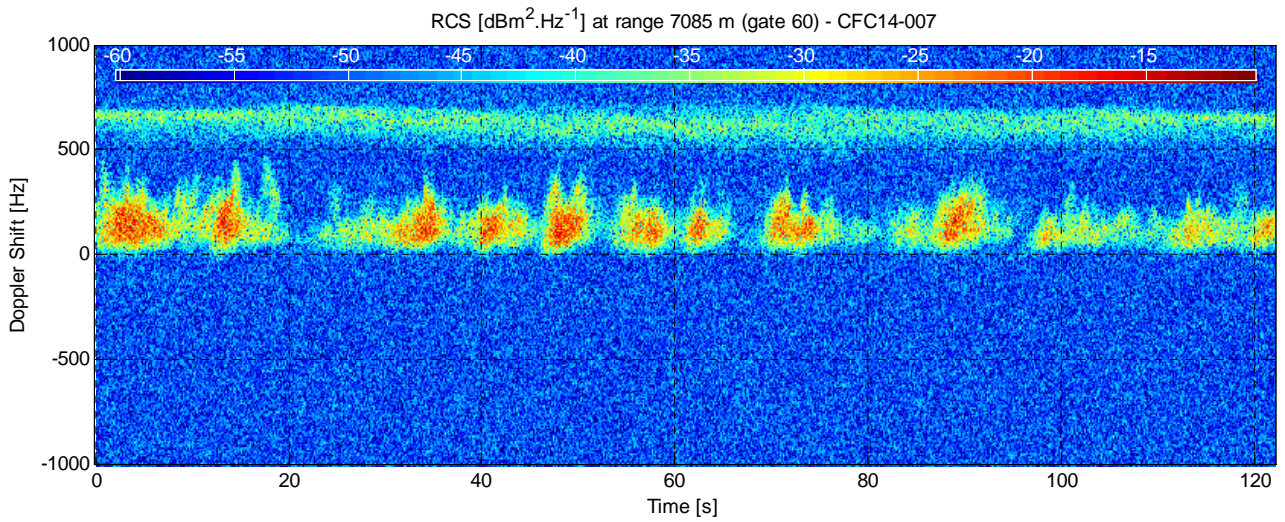
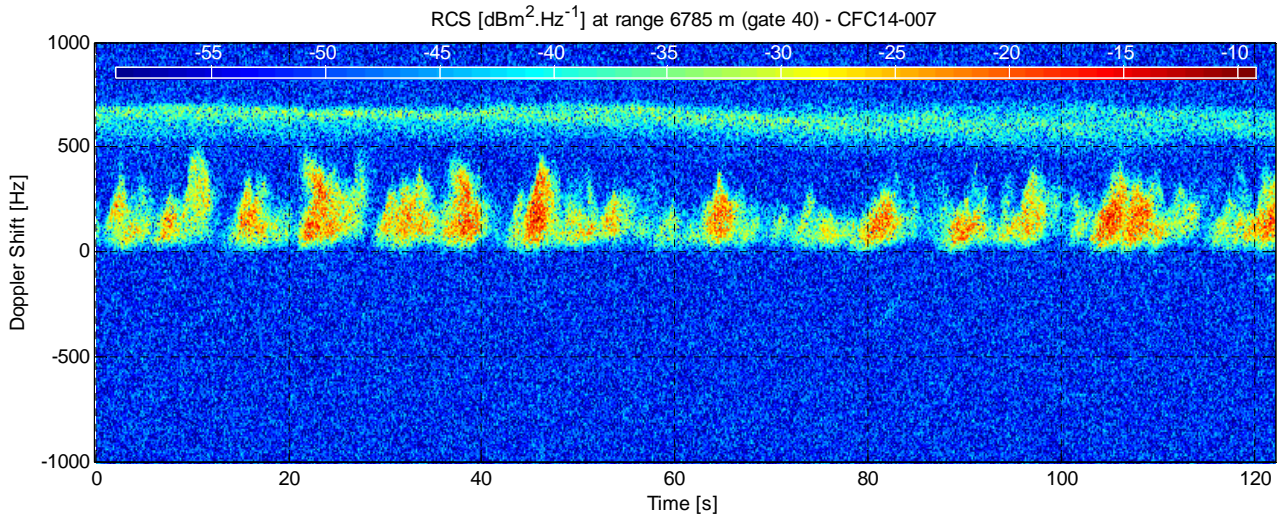
Dataset CFC14-007



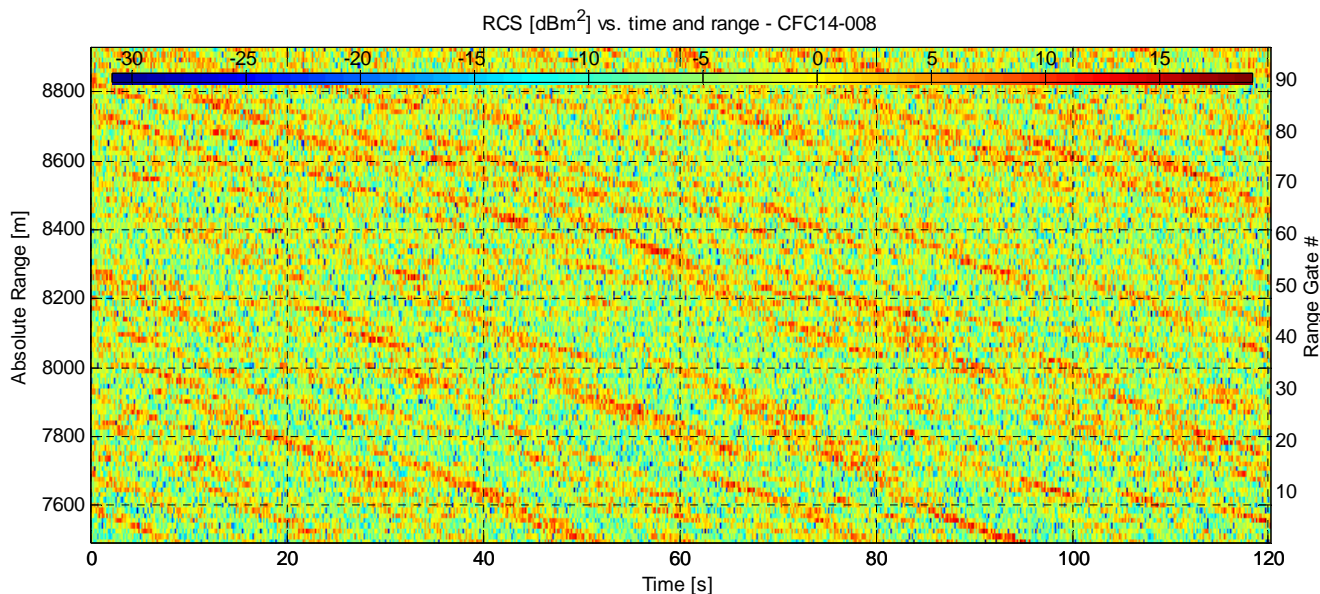
| Experiment Summary | Value | Radar Setup | Value |
|--------------------|---------------------------|--------------------|------------------------------|
| Type | Sea Clutter | Tx Frequency | 9 GHz |
| Date | 31-Jul-2006 | PRF | 5 kHz |
| Start Time | 14:21:49.828 | Tracking Range | 6200 m |
| Duration | 611660 PRI's (122.3318 s) | Range Extend | 1440 m (96 gates), 15 m res. |
| Original File | PF060731.011 | Waveform Type | Fixed Frequency |
| Original Path | \20060731_ifs_g | Waveform Bandwidth | N/A |
| Processor Version | FMSCP Ver 01.22 | Waveform File | SC_Fixed_256BL.txt |

| Environment | Value | Geometry | Value | Processing | Value |
|---------------|------------------------|---------------|--------------------------|-------------------|-----------------|
| Inst. Wind | 18.1 kts, 150.3 deg. N | Grazing Angle | 0.478 - 0.599 deg. | Odd Gates Offset | -2.7609+3.1597i |
| Wind Gust | 27.8 kts, 159 deg. N | Antenna Azm. | 166.5 deg. N | Even Gates Offset | 1.6379-0.60116i |
| 8hr Avg. Wind | 15.1 kts, 168.7 deg. N | Antenna Elv. | -1.176 deg. | I/Q Imbalance | Bypassed |
| Wave (SWH) | 3 m, 181.8 deg. N | Antenna BW. | 1.8 deg. Az, 1.8 deg. El | Complex Conj. | Applied |
| | | GPS Data | Not applicable | Calibr. Coeff. | 190.9 dB |



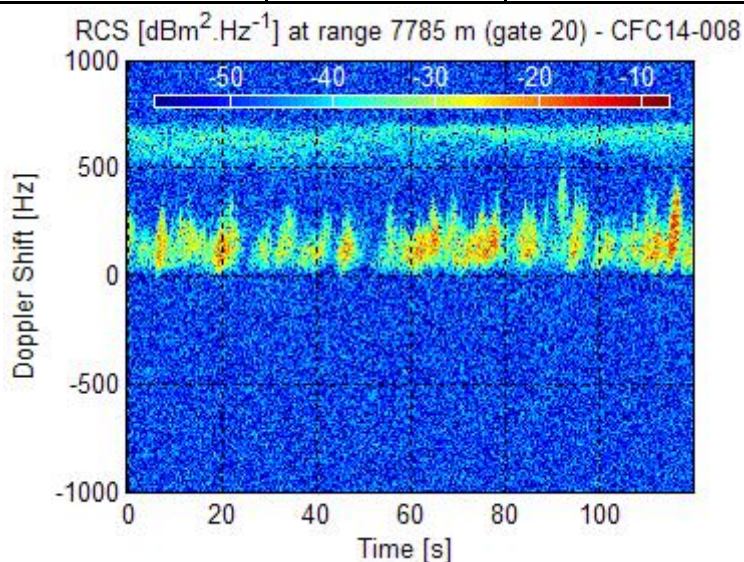
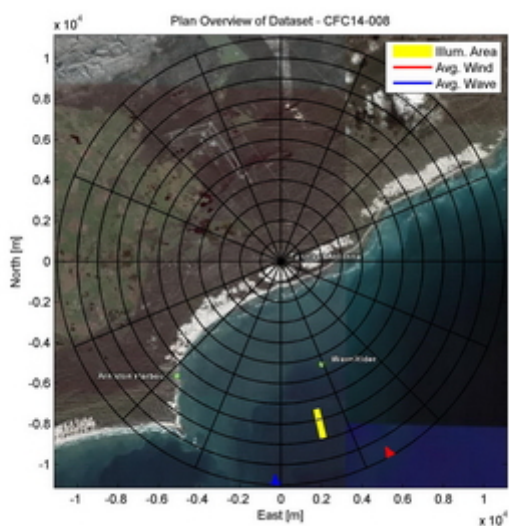


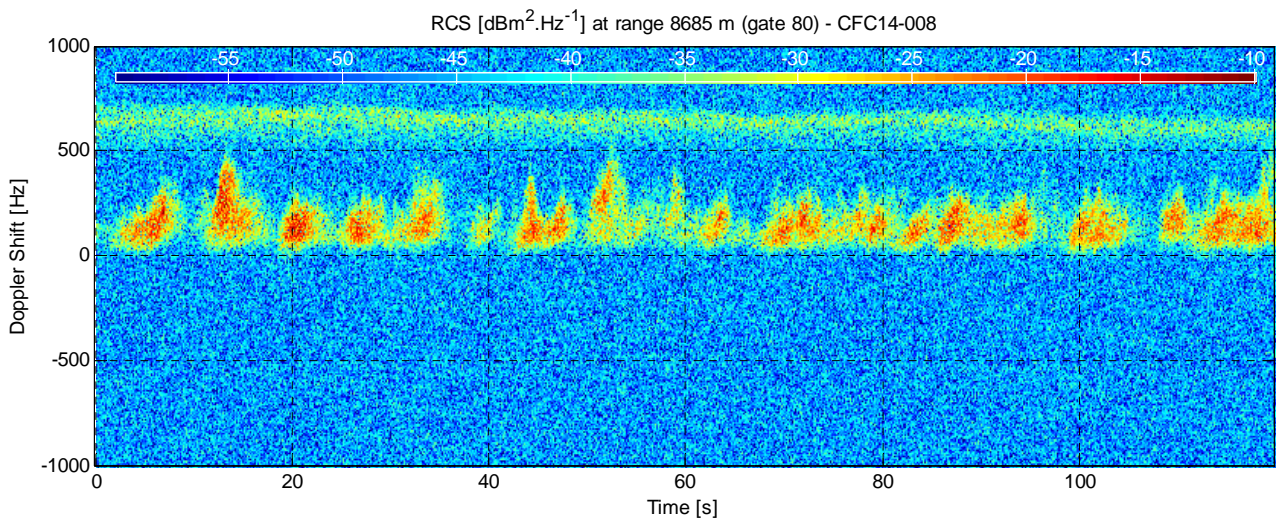
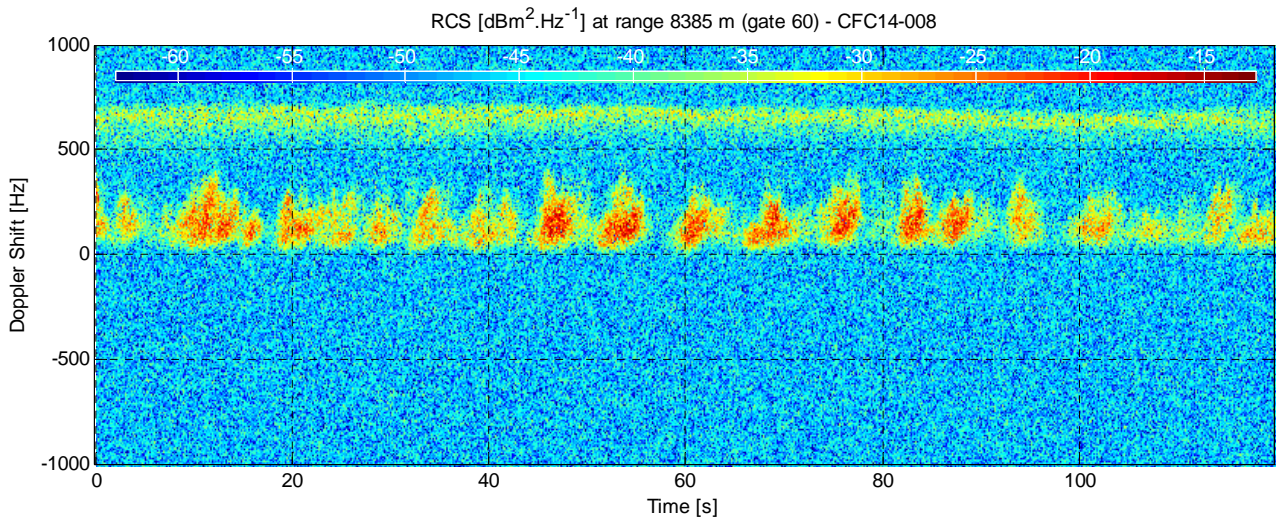
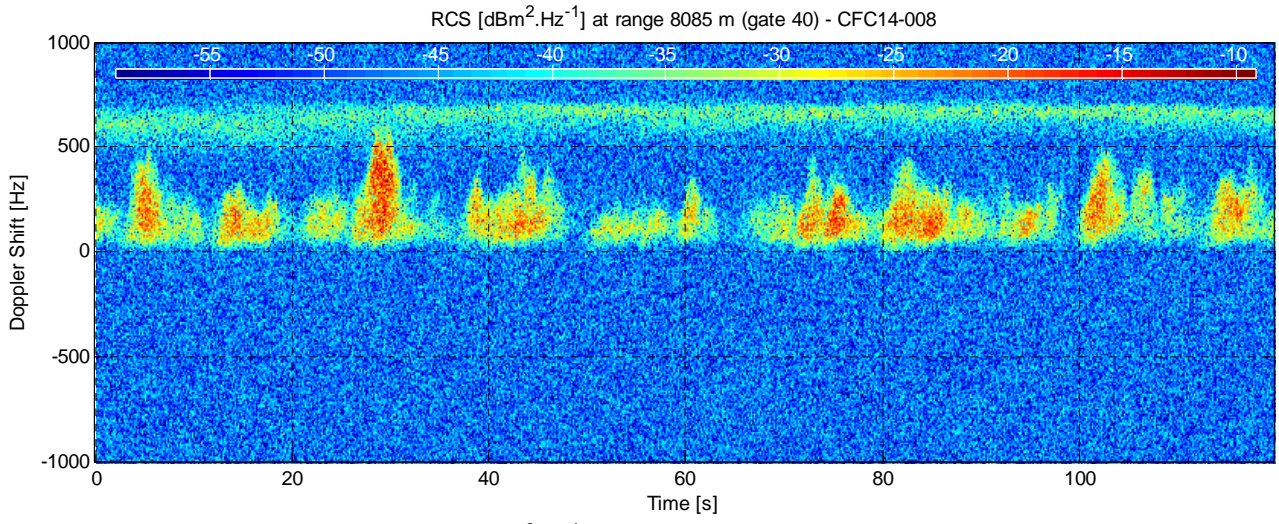
Dataset CFC14-008



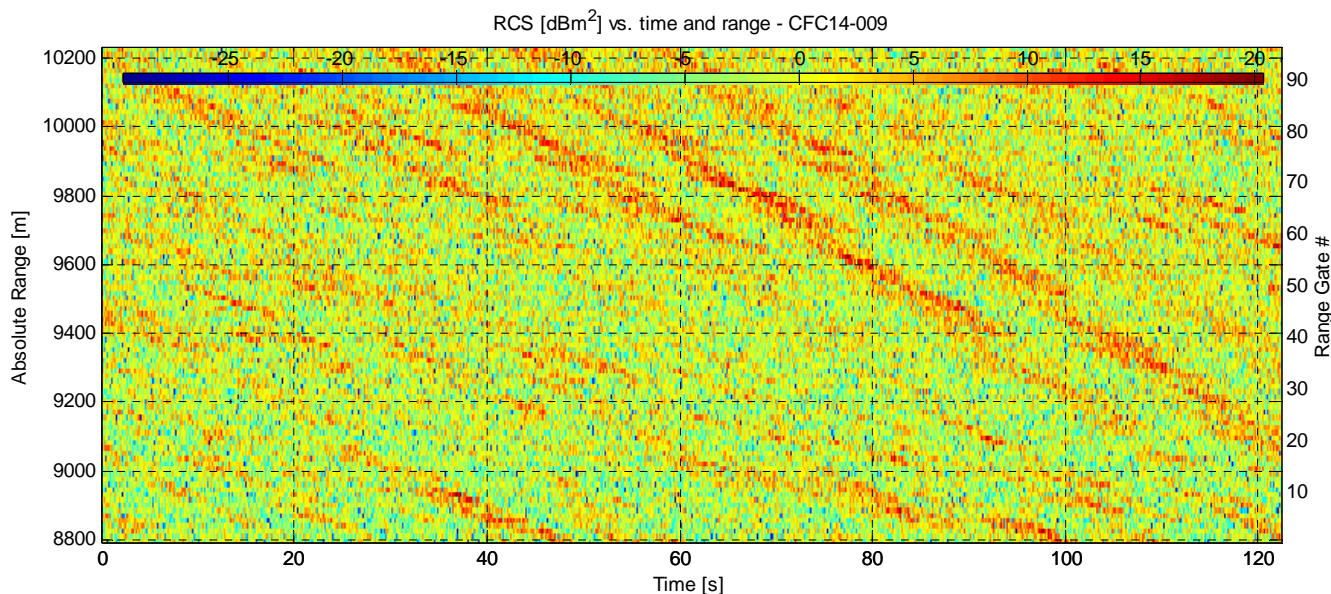
| Experiment Summary | Value | Radar Setup | Value |
|--------------------|---------------------------|--------------------|------------------------------|
| Type | Sea Clutter | Tx Frequency | 9 GHz |
| Date | 31-Jul-2006 | PRF | 5 kHz |
| Start Time | 14:25:20.296 | Tracking Range | 7500 m |
| Duration | 600479 PRI's (120.0956 s) | Range Extend | 1440 m (96 gates), 15 m res. |
| Original File | PF060731.012 | Waveform Type | Fixed Frequency |
| Original Path | \20060731_ifs_g | Waveform Bandwidth | N/A |
| Processor Version | FMSCP Ver 01.22 | Waveform File | SC_Fixed_256BL.txt |

| Environment | Value | Geometry | Value | Processing | Value |
|---------------|------------------------|---------------|--------------------------|-------------------|-----------------|
| Inst. Wind | 18 kts, 150.4 deg. N | Grazing Angle | 0.4 - 0.487 deg. | Odd Gates Offset | -2.9471+3.2143i |
| Wind Gust | 27.8 kts, 159 deg. N | Antenna Azm. | 166.4 deg. N | Even Gates Offset | 1.5195-0.52253i |
| 8hr Avg. Wind | 15.2 kts, 168.4 deg. N | Antenna Elv. | -1.184 deg. | I/Q Imbalance | Bypassed |
| Wave (SWH) | 2.99 m, 181.5 deg. N | Antenna BW. | 1.8 deg. Az, 1.8 deg. El | Complex Conj. | Applied |
| | | GPS Data | Not applicable | Calibr. Coeff. | 190.9 dB |



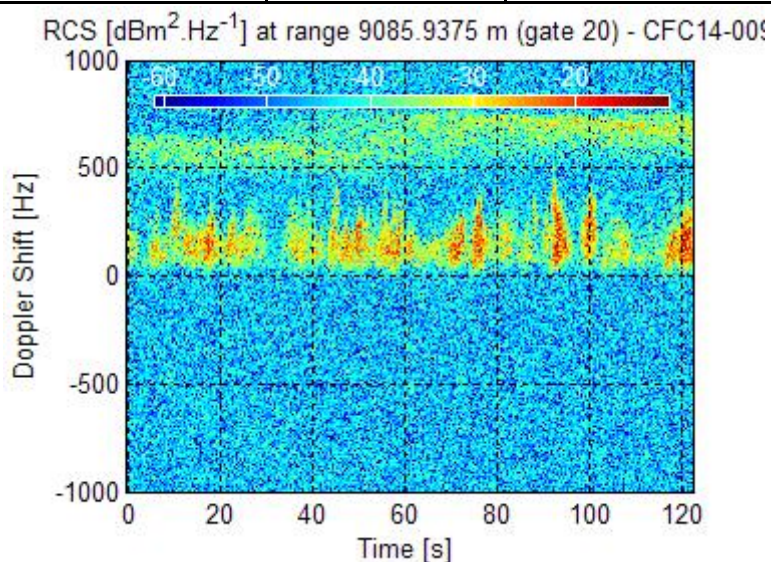
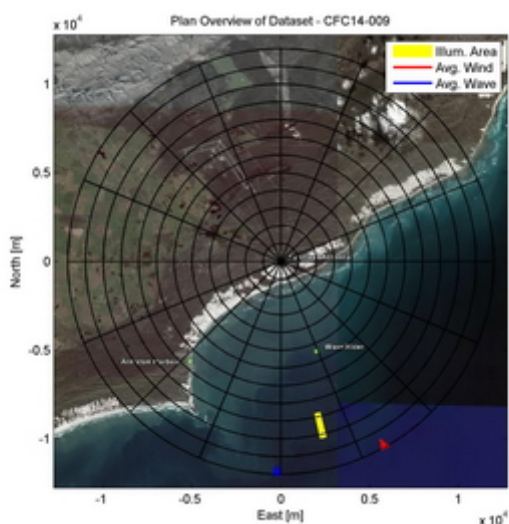


Dataset CFC14-009

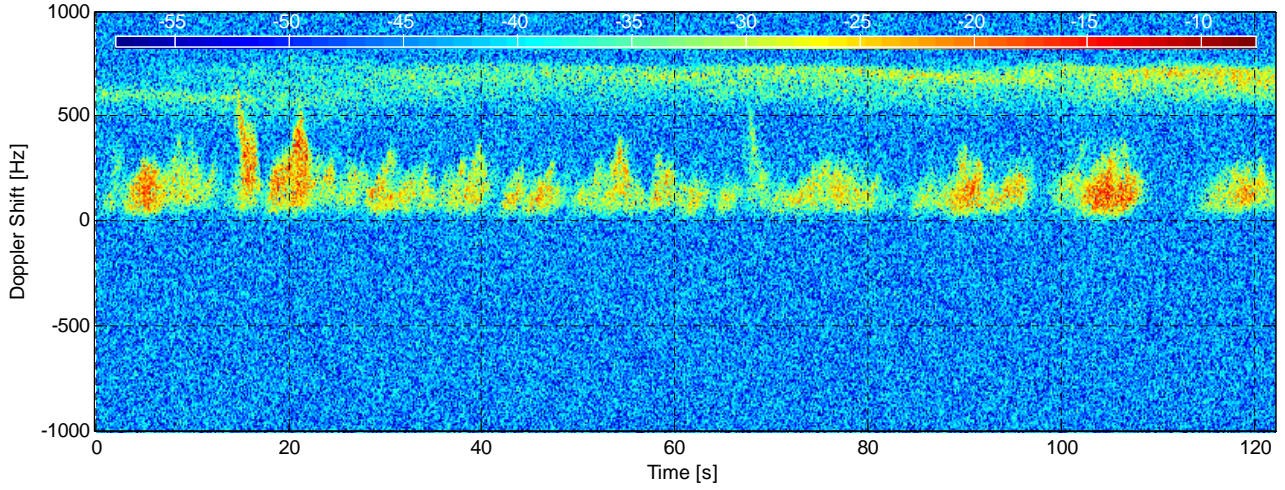


| Experiment Summary | Value | Radar Setup | Value |
|--------------------|---------------------------|--------------------|------------------------------|
| Type | Sea Clutter | Tx Frequency | 9 GHz |
| Date | 31-Jul-2006 | PRF | 5 kHz |
| Start Time | 14:30:51.468 | Tracking Range | 8800.94 m |
| Duration | 611660 PRI's (122.3318 s) | Range Extend | 1440 m (96 gates), 15 m res. |
| Original File | PF060731.015 | Waveform Type | Fixed Frequency |
| Original Path | \20060731_ifs_g | Waveform Bandwidth | N/A |
| Processor Version | FMSCP Ver 01.22 | Waveform File | SC_Fixed_256BL.txt |

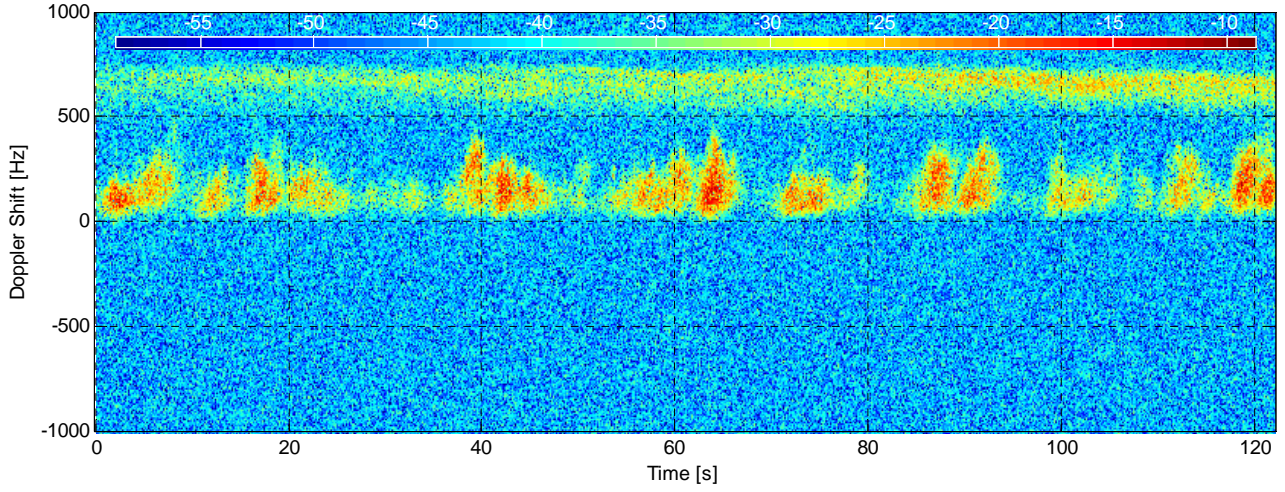
| Environment | Value | Geometry | Value | Processing | Value |
|---------------|------------------------|---------------|--------------------------|-------------------|-----------------|
| Inst. Wind | 17.9 kts, 150.7 deg. N | Grazing Angle | 0.341 - 0.407 deg. | Odd Gates Offset | 1.6285-0.44948i |
| Wind Gust | 27.8 kts, 159 deg. N | Antenna Azm. | 166.4 deg. N | Even Gates Offset | -2.9781+3.4259i |
| 8hr Avg. Wind | 15.4 kts, 168 deg. N | Antenna Elv. | -1.184 deg. | I/Q Imbalance | Bypassed |
| Wave (SWH) | 2.99 m, 181.2 deg. N | Antenna BW. | 1.8 deg. Az, 1.8 deg. El | Complex Conj. | Applied |
| | | GPS Data | Not applicable | Calibr. Coeff. | 190.9 dB |



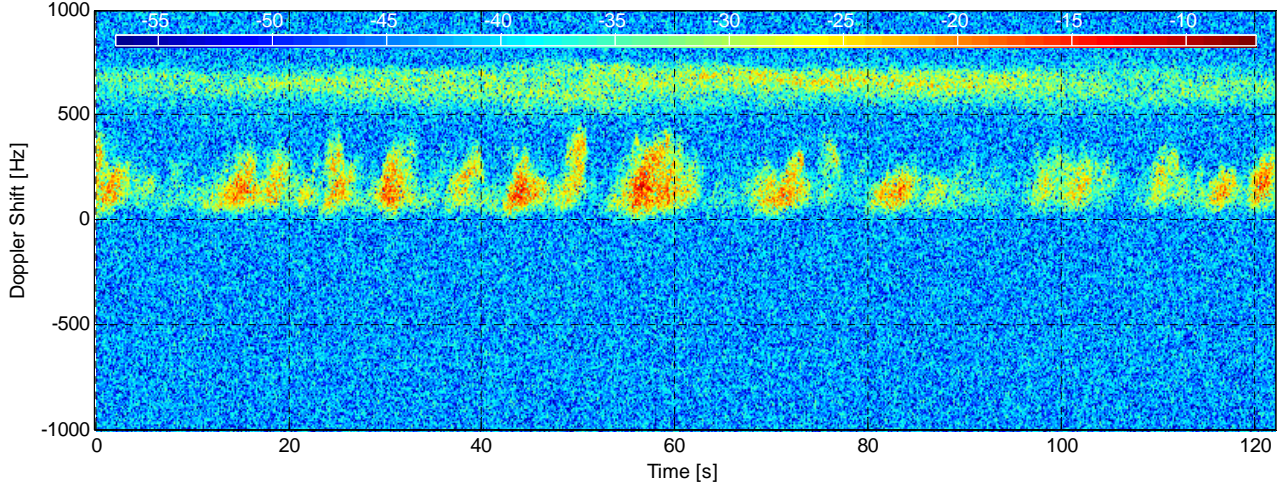
RCS [dBm².Hz⁻¹] at range 9385.9375 m (gate 40) - CFC14-009



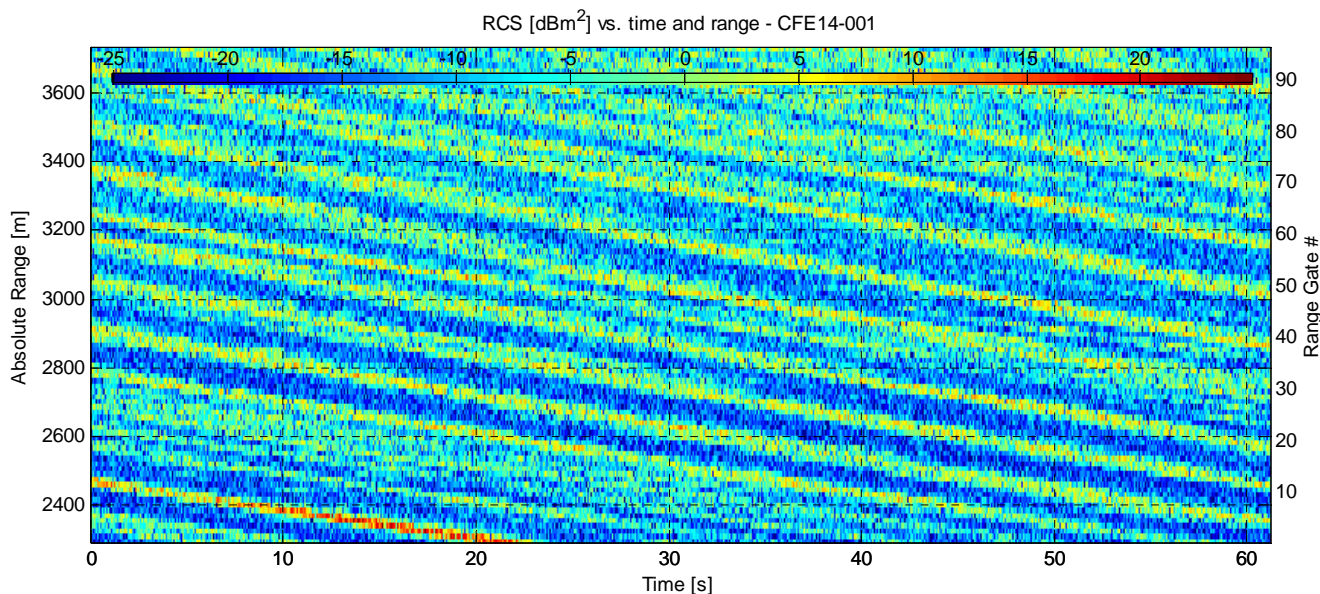
RCS [dBm².Hz⁻¹] at range 9685.9375 m (gate 60) - CFC14-009



RCS [dBm².Hz⁻¹] at range 9985.9375 m (gate 80) - CFC14-009

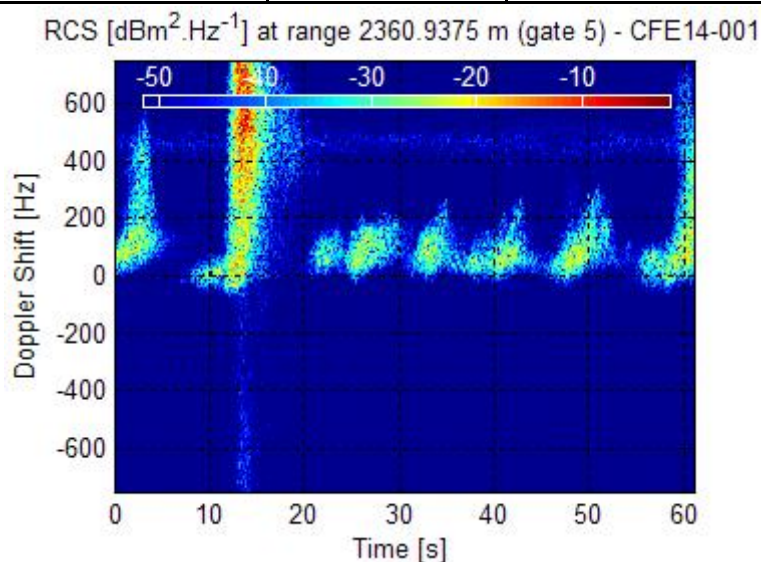
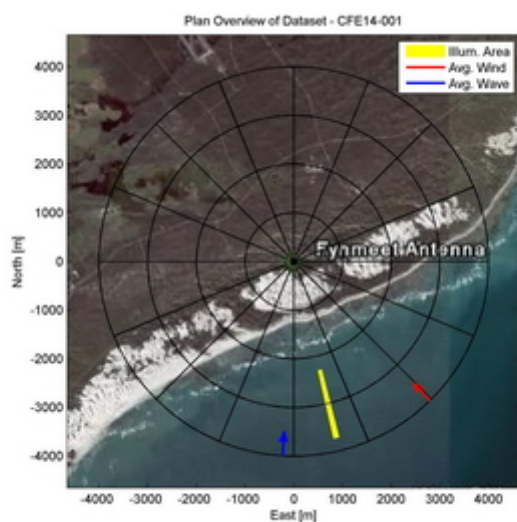


Dataset CFE14-001

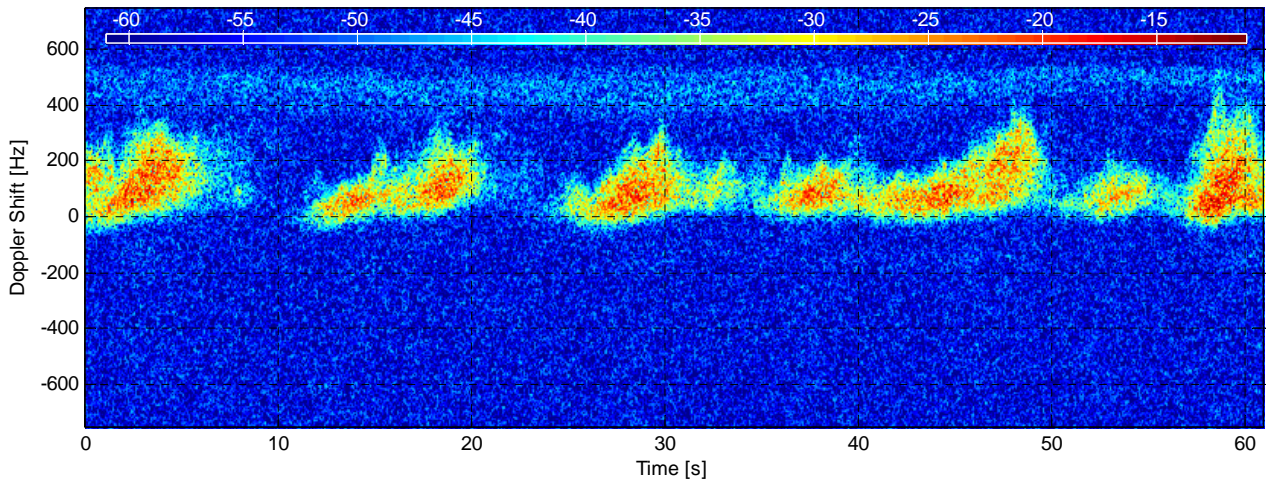


| Experiment Summary | Value | Radar Setup | Value |
|--------------------|--------------------------|--------------------|------------------------------|
| Type | Sea Clutter | Tx Frequency | 10.3 GHz |
| Date | 31-Jul-2006 | PRF | 5 kHz |
| Start Time | 17:18:08.953 | Tracking Range | 2300.94 m |
| Duration | 305830 PRI's (61.1658 s) | Range Extend | 1440 m (96 gates), 15 m res. |
| Original File | PF060731.020 | Waveform Type | Fixed Frequency |
| Original Path | \20060731_ifs | Waveform Bandwidth | N/A |
| Processor Version | FMSCP Ver 01.22 | Waveform File | SC_Fixed_256BL.txt |

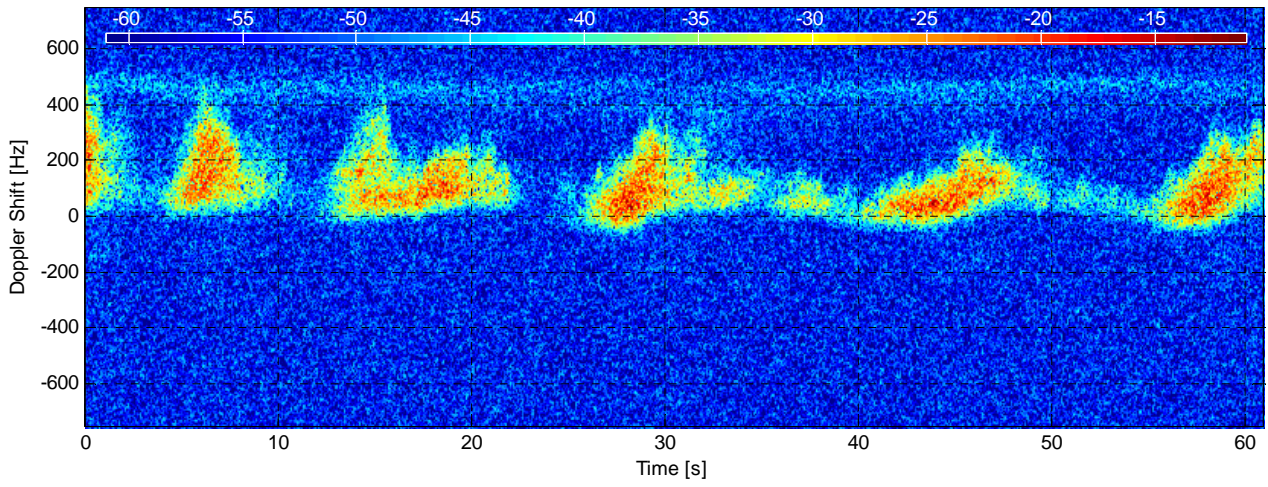
| Environment | Value | Geometry | Value | Processing | Value |
|---------------|------------------------|---------------|--------------------------|-------------------|------------------|
| Inst. Wind | 12.5 kts, 135.9 deg. N | Grazing Angle | 1.02 - 1.66 deg. | Odd Gates Offset | 2.6122+3.5111i |
| Wind Gust | 18.7 kts, 143 deg. N | Antenna Azm. | 166.5 deg. N | Even Gates Offset | -3.346-0.069715i |
| 8hr Avg. Wind | 19.4 kts, 159.8 deg. N | Antenna Elv. | -1.261 deg. | I/Q Imbalance | Bypassed |
| Wave (SWH) | 3.11 m, 183.4 deg. N | Antenna BW. | 1.6 deg. Az, 1.6 deg. El | Complex Conj. | Applied |
| | | GPS Data | Not applicable | Calibr. Coeff. | 190.3 dB |



RCS [$\text{dBm}^2 \cdot \text{Hz}^{-1}$] at range 2885.9375 m (gate 40) - CFE14-001



RCS [$\text{dBm}^2 \cdot \text{Hz}^{-1}$] at range 3185.9375 m (gate 60) - CFE14-001



RCS [$\text{dBm}^2 \cdot \text{Hz}^{-1}$] at range 3485.9375 m (gate 80) - CFE14-001

